

Product datasheet

Anti-TLR9 antibody [M9.D6] (Biotin) ab95742

1 References [画像数 1](#)

製品の概要

製品名	Anti-TLR9 antibody [M9.D6] (Biotin)
製品の詳細	Rat monoclonal [M9.D6] to TLR9 (Biotin)
由来種	Rat
標識	Biotin
アプリケーション	適用あり: Flow Cyt
種交差性	交差種: Mouse
免疫原	A peptide derived from the extracellular portion of Mouse TLR9.
ポジティブ・コントロール	Fixed and permeabilized Mouse TLR9 transfected 293 cells.
特記事項	TLR9 is not detected by flow cytometry using this antibody on RBC lysed Mouse splenocytes stained for intracellular TLR9. This may be due to limitations of antigen detection by flow cytometry. Further studies are needed to determine the relationship between mRNA expression and protein detection.

製品の特性

製品の状態	Liquid
保存方法	Shipped at 4°C. Store at +4°C short term (1-2 weeks). Store at -20°C or -80°C. Avoid freeze / thaw cycle.
バッファー	Preservative: 0.09% Sodium Azide Constituents: PBS, 150mM Sodium chloride, pH 7.2
精製度	Protein G purified
一次抗体 備考	TLR9 is not detected by flow cytometry using this antibody on RBC lysed Mouse splenocytes stained for intracellular TLR9. This may be due to limitations of antigen detection by flow cytometry. Further studies are needed to determine the relationship between mRNA expression and protein detection.
ポリ/モノ	モノクローナル
クローン名	M9.D6
アイソタイプ	IgG2a

アプリケーション

Our [Abpromise guarantee](#) covers the use of **ab95742** in the following tested applications.

The application notes include recommended starting dilutions; optimal dilutions/concentrations should be determined by the end user.

アプリケーション	Abreviews	特記事項
----------	-----------	------

Flow Cyt

Use 0.25-0.5µg for 10⁵⁻⁸ cells.

A final volume of 100 µl is recommended for staining the cell sample.

[ab18445](#) - Rat monoclonal IgG2a, is suitable for use as an isotype control with this antibody.

ターゲット情報

機能

Key component of innate and adaptive immunity. TLRs (Toll-like receptors) control host immune response against pathogens through recognition of molecular patterns specific of microorganisms. TLR9 is a nucleotide-sensing TLR which is activated by unmethylated cytidine-phosphate-guanosine (CpG) dinucleotides. Acts via MYD88 and TRAF6, leading to NF-kappa-B activation, cytokine secretion and the inflammatory response.

組織特異性

Highly expressed in spleen, lymph node, tonsil and peripheral blood leukocytes, especially in plasmacytoid pre-dendritic cells. Levels are much lower in monocytes and CD11c+ immature dendritic cells. Also detected in lung and liver.

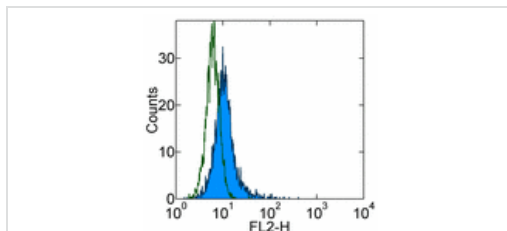
配列類似性

Belongs to the Toll-like receptor family.
Contains 26 LRR (leucine-rich) repeats.
Contains 1 TIR domain.

細胞内局在

Endoplasmic reticulum membrane. Endosome. Lysosome. Cytoplasmic vesicle > phagosome.
Relocalizes from endoplasmic reticulum to endosome and lysosome upon stimulation with agonist.

画像



Flow Cytometry - TLR9 antibody [M9.D6] (Biotin)
(ab95742)

Staining of fixed and permeabilized Mouse TLR9 transfected 293 cells with 0.25 µg of Rat IgG2a Isotype Control Biotin (open histogram) or 0.25 µg of ab95742 (filled histogram), followed by Streptavidin PE. Total cells were used for analysis.

Please note: All products are "FOR RESEARCH USE ONLY AND ARE NOT INTENDED FOR DIAGNOSTIC OR THERAPEUTIC USE"

Our Abpromise to you: Quality guaranteed and expert technical support

- Replacement or refund for products not performing as stated on the datasheet
- Valid for 12 months from date of delivery
- Response to your inquiry within 24 hours

- We provide support in Chinese, English, French, German, Japanese and Spanish
- Extensive multi-media technical resources to help you
- We investigate all quality concerns to ensure our products perform to the highest standards

If the product does not perform as described on this datasheet, we will offer a refund or replacement. For full details of the Abpromise, please visit <http://www.abcam.co.jp/abpromise> or contact our technical team.

Terms and conditions

- Guarantee only valid for products bought direct from Abcam or one of our authorized distributors