

Product datasheet

Anti-Snf1lk2 antibody ab95187

画像数 2

製品の概要

| | |
|--------------|--|
| 製品名 | Anti-Snf1lk2 antibody |
| 製品の詳細 | Rabbit polyclonal to Snf1lk2 |
| 由来種 | Rabbit |
| アプリケーション | 適用あり: WB, IP |
| 種交差性 | 交差種: Human 交差が予測される動物種: Chimpanzee, Rhesus monkey, Gorilla, Orangutan |
| 免疫原 | Synthetic peptide, corresponding to a region within internal sequence amino acids 600-650 of Human Snf1lk2 (NP_056006.1) |
| ポジティブ・コントロール | HeLa whole cell lysate, 293T whole cell lysate |

製品の特性

| | |
|----------|--|
| 製品の状態 | Liquid |
| 保存方法 | Shipped at 4°C. Upon delivery aliquot and store at -20°C. Avoid freeze / thaw cycles. |
| バッファー | Preservative: 0.09% Sodium Azide Constituents: Tris citrate/phosphate, pH 7-8 |
| 精製度 | Immunogen affinity purified |
| 特記事項(精製) | ab95187 was affinity purified using an epitope specific to Snf1lk2 immobilized on a solid support. |
| ポリ/モノ | ポリクローナル |
| アイソタイプ | IgG |

アプリケーション

Our [Abpromise guarantee](#) covers the use of **ab95187** in the following tested applications.

The application notes include recommended starting dilutions; optimal dilutions/concentrations should be determined by the end user.

| アプリケーション | Abreviews | 特記事項 |
|----------|-----------|--|
| WB | | 1/2000 - 1/10000. Predicted molecular weight: 104 kDa. |

| アプリケーション | Abreviews | 特記事項 |
|----------|-----------|------|
|----------|-----------|------|

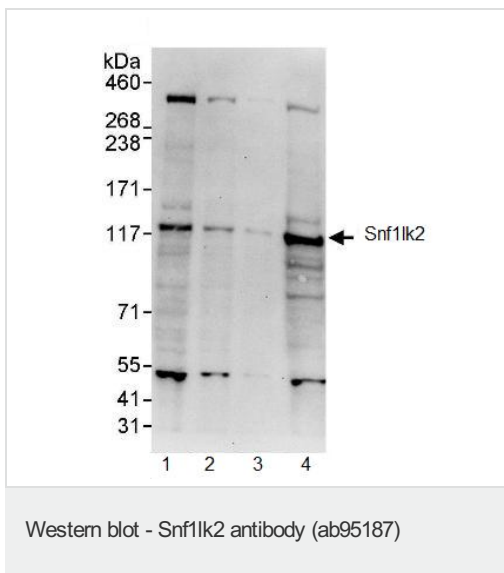
IP

Use at 2-5 µg/mg of lysate.

ターゲット情報

| | |
|--------------|--|
| 機能 | Phosphorylates 'Ser-794' of IRS1 in insulin-stimulated adipocytes, potentially modulating the efficiency of insulin signal transduction. Inhibits CREB activity by phosphorylating and repressing TORCs, the CREB-specific coactivators. |
| 配列類似性 | Belongs to the protein kinase superfamily. CAMK Ser/Thr protein kinase family. AMPK subfamily. Contains 1 protein kinase domain. Contains 1 UBA domain. |
| 細胞内局在 | Cytoplasm. |

画像



All lanes : Anti-Snf1lk2 antibody (ab95187) at 0.4 µg/ml

Lane 1 : HeLa whole cell lysate at 50 µg

Lane 2 : HeLa whole cell lysate at 15 µg

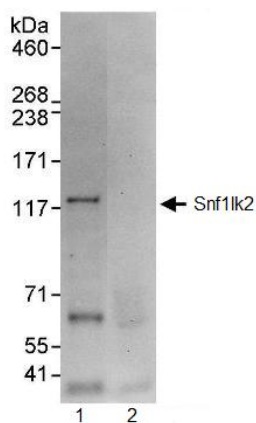
Lane 3 : HeLa whole cell lysate at 5 µg

Lane 4 : 293T whole cell lysate at 50 µg

Developed using the ECL technique.

Predicted band size: 104 kDa

Exposure time: 30 seconds



Immunoprecipitation - Snf11k2 antibody (ab95187)

ab95187 at 3 $\mu\text{g}/\text{mg}$ of lysate precipitating Snf11k2 from HeLa whole cell lysate. Lane 1; HeLa whole cell lysate. Lane 2; Control IgG. 1mg of lysate used for IP and 20% of IP loaded. Detection utilised ab95187 at 1 $\mu\text{g}/\text{ml}$ and ECL with a 30 second exposure.

Please note: All products are "FOR RESEARCH USE ONLY AND ARE NOT INTENDED FOR DIAGNOSTIC OR THERAPEUTIC USE"

Our Abpromise to you: Quality guaranteed and expert technical support

- Replacement or refund for products not performing as stated on the datasheet
- Valid for 12 months from date of delivery
- Response to your inquiry within 24 hours
- We provide support in Chinese, English, French, German, Japanese and Spanish
- Extensive multi-media technical resources to help you
- We investigate all quality concerns to ensure our products perform to the highest standards

If the product does not perform as described on this datasheet, we will offer a refund or replacement. For full details of the Abpromise, please visit <http://www.abcam.co.jp/abpromise> or contact our technical team.

Terms and conditions

- Guarantee only valid for products bought direct from Abcam or one of our authorized distributors