

Product datasheet

Anti-TRPV3 antibody [S15-39] ab94582

画像数 1

製品の概要

製品名	Anti-TRPV3 antibody [S15-39]
製品の詳細	Mouse monoclonal [S15-39] to TRPV3
アプリケーション	適用あり: Flow Cyt, WB, IHC-P, IHC-Fr, ICC, ICC/IF
種交差性	交差種: Mouse, Rat, Human
免疫原	Synthetic peptide corresponding to Rat TRPV3 aa 458-474 (C terminal). Sequence: VSYYRPREGEALPHPLA Run BLAST with Run BLAST with
ポジティブ・コントロール	COS-1 cell lysate transiently transfected with TRPV3

製品の特性

製品の状態	Liquid
保存方法	Shipped at 4°C. Upon delivery aliquot and store at -20°C. Avoid freeze / thaw cycles.
バッファー	Preservative: 0.09% Sodium Azide Constituents: 50% Glycerol, PBS, pH 7.4
精製度	Protein G purified
ポリ/モノ	モノクローナル
クローン名	S15-39
アイソタイプ	IgG2a

アプリケーション

Our [Abpromise guarantee](#) covers the use of **ab94582** in the following tested applications.

The application notes include recommended starting dilutions; optimal dilutions/concentrations should be determined by the end user.

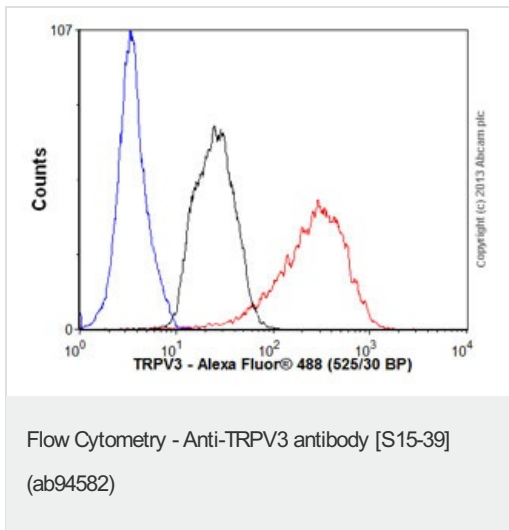
アプリケーション	Abreviews	特記事項
Flow Cyt		Use 0.1-1µg for 10 ⁶ cells. ab170191 -Mouse monoclonal IgG2a, is suitable for use as an isotype control with this antibody.

WB	Use a concentration of 1 - 10 µg/ml. Predicted molecular weight: 91 kDa.
IHC-P	Use a concentration of 0.1 - 1 µg/ml.
IHC-Fr	Use a concentration of 0.1 - 1 µg/ml.
ICC	Use a concentration of 0.1 - 1 µg/ml.
ICC/IF	Use a concentration of 1 - 10 µg/ml.

ターゲット情報

機能	Putative receptor-activated non-selective calcium permeant cation channel. It is activated by innocuous (warm) temperatures and shows an increased response at noxious temperatures greater than 39 degrees Celsius. Activation exhibits an outward rectification. May associate with TRPV1 and may modulate its activity.
組織特異性	Abundantly expressed in CNS. Widely expressed at low levels. Detected in dorsal root ganglion (at protein level).
配列類似性	Belongs to the transient receptor (TC 1.A.4) family. TrpV subfamily. TRPV3 sub-subfamily. Contains 3 ANK repeats.
細胞内局在	Membrane.

Anti-TRPV3 antibody [S15-39] 画像



Overlay histogram showing SH-SY5Y cells stained with ab94582 (red line). The cells were fixed with 4% paraformaldehyde (10 min) and incubated in 1x PBS / 10% normal goat serum / 0.3M glycine to block non-specific protein-protein interactions. The cells were then incubated with the antibody (ab94582, 1 µg/1x10⁶ cells) for 30 min at 22°C. The secondary antibody used was Alexa Fluor® 488 goat anti-mouse IgG (H+L) (ab150113) at 1/2000 dilution for 30 min at 22°C. Isotype control antibody (black line) was mouse IgG2a [ICIGG2A] (ab91361, 1 µg/1x10⁶ cells) used under the same conditions. Unlabelled sample (blue line) was also used as a control. Acquisition of >5,000 events were collected using a 20mW Argon ion laser (488nm) and 525/30 bandpass filter. This antibody gave a positive result in 80% methanol (5 min) fixed SH-SY5Y cells used under the same conditions. Please note that Abcam do not have any data for use of this antibody on non-fixed cells. We welcome any customer feedback.

Please note: All products are "FOR RESEARCH USE ONLY AND ARE NOT INTENDED FOR DIAGNOSTIC OR THERAPEUTIC USE"

Our Abpromise to you: Quality guaranteed and expert technical support

- Replacement or refund for products not performing as stated on the datasheet
- Valid for 12 months from date of delivery
- Response to your inquiry within 24 hours
- We provide support in Chinese, English, French, German, Japanese and Spanish
- Extensive multi-media technical resources to help you
- We investigate all quality concerns to ensure our products perform to the highest standards

If the product does not perform as described on this datasheet, we will offer a refund or replacement. For full details of the Abpromise, please visit <http://www.abcam.co.jp/abpromise> or contact our technical team.

Terms and conditions

- Guarantee only valid for products bought direct from Abcam or one of our authorized distributors