

Product datasheet

Anti-RAB3IP antibody ab94455

画像数 2

製品の概要

| | |
|--------------|--|
| 製品名 | Anti-RAB3IP antibody |
| 製品の詳細 | Rabbit polyclonal to RAB3IP |
| 由来種 | Rabbit |
| アプリケーション | 適用あり: ICC/IF, WB |
| 種交差性 | 交差種: Human 交差が予測される動物種: Mouse, Rat, Rabbit, Horse, Guinea pig, Cow, Cat, Dog |
| 免疫原 | Synthetic peptide corresponding to a region within N terminal amino acids 108-157 (PCSTSGVTAG LTKLTTRKDN YNAEREFLLQ ATITEACDGS DDIFGLSTDS) of Human RAB3IP (NP_783322). Run BLAST with ExPASy Run BLAST with NCBI |
| ポジティブ・コントロール | NCH226 cell lysate |

製品の特性

| | |
|--------|--|
| 製品の状態 | Liquid |
| 保存方法 | Shipped at 4°C. Upon delivery aliquot and store at -20°C. Avoid repeated freeze / thaw cycles. |
| バッファー | Preservative: None Constituents: 2% Sucrose, PBS |
| 精製度 | Immunogen affinity purified |
| ポリ/モノ | ポリクローナル |
| アイソタイプ | IgG |

アプリケーション

Our [Abpromise guarantee](#) covers the use of **ab94455** in the following tested applications.

The application notes include recommended starting dilutions; optimal dilutions/concentrations should be determined by the end user.

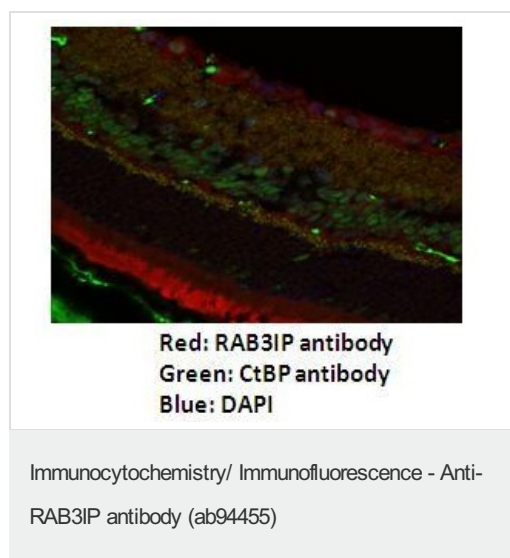
| アプリケーション | Abreviews | 特記事項 |
|----------|-----------|--------|
| ICC/IF | | 1/200. |

| アプリケーション | Abreviews | 特記事項 |
|----------|-----------|--|
| WB | | Use a concentration of 1 µg/ml. Predicted molecular weight: 53 kDa. Good results were obtained when blocked with 5% non-fat dry milk in 0.05% PBS-T. |

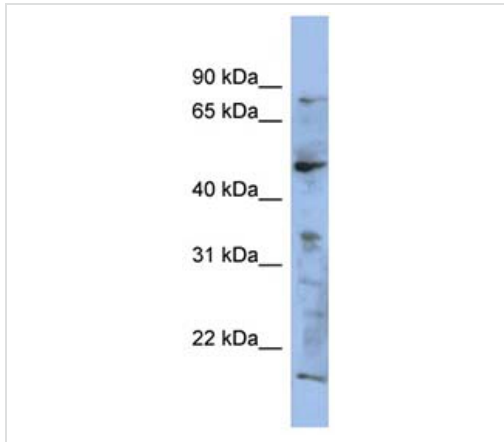
ターゲット情報

| | |
|--------------|---|
| 機能 | Guanine nucleotide exchange factor (GEF) which may activate RAB8A and RAB8B. Promotes the exchange of GDP to GTP, converting inactive GDP-bound Rab proteins into their active GTP-bound form. Mediates the release of GDP from RAB8A and RAB8B but not from RAB3A or RAB5. Modulates actin organization and promotes polarized transport of RAB8A-specific vesicles to the cell surface. Together with RAB11A, RAB8A, the exocyst complex, PARD3, PRKCI, ANXA2, CDC42 and DNMBP promotes transcytosis of PODXL to the apical membrane initiation sites (AMIS), apical surface formation and lumenogenesis. |
| 組織特異性 | Expressed in brain, kidney, heart, pancreas and placenta. Not detected in skeletal muscle or liver. |
| 配列類似性 | Belongs to the SEC2 family. |
| 細胞内局在 | Cytoplasm. Nucleus. Cytoplasm, cytoskeleton. Cell projection, lamellipodium. Predominantly cytoplasmic but a small proportion colocalizes with SSX2 in the nucleus. Activation of protein kinase C results in redistribution to the periphery of lamellipodia. In the cytoskeleton, localizes to cortical actin. |

画像



Species + tissue type: Mouse retina tissue.
 Primary antibody dilution: 1:200. Secondary antibody: Goat anti-rabbit Alexafluor 568.
 Secondary antibody dilution: 1:200



Western blot - RAB3IP antibody (ab94455)

Anti-RAB3IP antibody (ab94455) at 1 µg/ml
(in 5% skim milk / PBS buffer) + NCI-H226 cell
lysate at 10 µg

Secondary

HRP conjugated anti-Rabbit IgG at 1/50000
dilution

Predicted band size: 53 kDa

Gel concentration: 12%

Please note: All products are "FOR RESEARCH USE ONLY AND ARE NOT INTENDED FOR DIAGNOSTIC OR THERAPEUTIC USE"

Our Abpromise to you: Quality guaranteed and expert technical support

- Replacement or refund for products not performing as stated on the datasheet
- Valid for 12 months from date of delivery
- Response to your inquiry within 24 hours
- We provide support in Chinese, English, French, German, Japanese and Spanish
- Extensive multi-media technical resources to help you
- We investigate all quality concerns to ensure our products perform to the highest standards

If the product does not perform as described on this datasheet, we will offer a refund or replacement. For full details of the Abpromise, please visit <http://www.abcam.co.jp/abpromise> or contact our technical team.

Terms and conditions

- Guarantee only valid for products bought direct from Abcam or one of our authorized distributors