




## Product datasheet

# Anti-Calnexin antibody ab93355

1 Abreviews 1 References 画像数 2

### 製品の概要

<b>製品名</b>	Anti-Calnexin antibody
<b>製品の詳細</b>	Goat polyclonal to Calnexin
<b>由来種</b>	Goat
<b>特異性</b>	Recognizes ER membrane, mitochondria and cis-Golgi
<b>アプリケーション</b>	<b>適用あり:</b> WB, Sandwich ELISA, IHC-P
<b>種交差性</b>	<b>交差種:</b> Mouse, Human <b>交差が予測される動物種:</b> Rat, Hamster, Cow, Dog, Pig, Orangutan 
<b>免疫原</b>	Synthetic peptide corresponding to Human Calnexin aa 169-183 (N terminal) (Cysteine residue). Sequence: SKTPELNLDQFHDKT <div style="text-align: right;">  <a href="#">Run BLAST with</a>  <a href="#">Run BLAST with</a> </div>
<b>ポジティブ・コントロール</b>	Mouse heart lysate, Human brain cerebellum lysate, NIH3T3 and HeLa cell lysates
<b>特記事項</b>	References regarding specificity  Horner SM <i>et al.</i> Mitochondrial-associated endoplasmic reticulum membranes (MAM) form innate immune synapses and are targeted by hepatitis C virus. <i>Proc Natl Acad Sci U S A</i> 108:14590-5 (2011). <a href="#">PubMed: 21844353</a>  Myhill N <i>et al.</i> The subcellular distribution of calnexin is mediated by PACS-2. <i>Mol Biol Cell</i> 19:2777-88 (2008). <a href="#">PubMed: 18417615</a>  Yoshimura SI <i>et al.</i> Direct targeting of cis-Golgi matrix proteins to the Golgi apparatus. <i>J Cell Sci</i> 114:4105-15 (2001). <a href="#">PubMed: 11739642</a>

### 製品の特性

<b>製品の状態</b>	Liquid
<b>保存方法</b>	Shipped at 4°C. Upon delivery aliquot and store at -20°C. Avoid freeze / thaw cycles.
<b>バッファー</b>	Preservative: 0.02% Sodium Azide Constituents: 0.5% BSA, Tris buffered saline, pH 7.3

精製度	Immunogen affinity purified
特記事項(精製)	Purified from goat serum by ammonium sulphate precipitation followed by antigen affinity chromatography using the immunizing peptide.
ポリモノ	ポリクローナル
アイソタイプ	IgG

## アプリケーション

Our [Abpromise guarantee](#) covers the use of **ab93355** in the following tested applications.

The application notes include recommended starting dilutions; optimal dilutions/concentrations should be determined by the end user.

アプリケーション	Abreviews	特記事項
WB		Use a concentration of 0.3 - 1 µg/ml. Detects a band of approximately 100 kDa (predicted molecular weight: 68 kDa).
Sandwich ELISA		Use a concentration of 1 - 2 µg/ml. Used as a reporter to detect captured recombinant Calnexin
IHC-P		Use a concentration of 3 - 6 µg/ml.

## ターゲット情報

機能	Calcium-binding protein that interacts with newly synthesized glycoproteins in the endoplasmic reticulum. It may act in assisting protein assembly and/or in the retention within the ER of unassembled protein subunits. It seems to play a major role in the quality control apparatus of the ER by the retention of incorrectly folded proteins.
配列類似性	Belongs to the calreticulin family.
細胞内局在	Endoplasmic reticulum membrane. Melanosome. Identified by mass spectrometry in melanosome fractions from stage I to stage IV.

## 画像

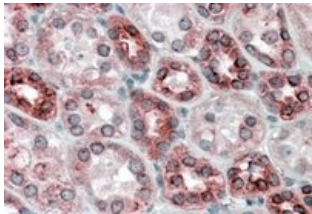


Anti-Calnexin antibody (ab93355) at 0.3 µg/ml  
+ Mouse heart lysate at 35 µg

Developed using the ECL technique.

**Predicted band size:** 68 kDa

**Observed band size:** 100 kDa



Immunohistochemistry (Formalin/PFA-fixed paraffin-embedded sections) - Anti-Calnexin antibody (ab93355)

ab93355 at 3.8 µg/ml staining Calnexin in Human Kidney by Immunohistochemistry (Formalin/PFA-Fixed paraffin-embedded sections). Steamed antigen retrieval with citrate buffer pH 6 was performed, antibody was revealed by AP-staining.

**Please note:** All products are "FOR RESEARCH USE ONLY AND ARE NOT INTENDED FOR DIAGNOSTIC OR THERAPEUTIC USE"

### Our Abpromise to you: Quality guaranteed and expert technical support

- Replacement or refund for products not performing as stated on the datasheet
- Valid for 12 months from date of delivery
- Response to your inquiry within 24 hours
- We provide support in Chinese, English, French, German, Japanese and Spanish
- Extensive multi-media technical resources to help you
- We investigate all quality concerns to ensure our products perform to the highest standards

If the product does not perform as described on this datasheet, we will offer a refund or replacement. For full details of the Abpromise, please visit <http://www.abcam.co.jp/abpromise> or contact our technical team.

### Terms and conditions

- Guarantee only valid for products bought direct from Abcam or one of our authorized distributors