

Product datasheet

Anti-LMAN1 antibody ab93177

1 Abreviews 1 References 画像数 2

製品の概要

製品名	Anti-LMAN1 antibody
製品の詳細	Rabbit polyclonal to LMAN1
由来種	Rabbit
アプリケーション	適用あり: WB
種交差性	交差種: Mouse, Human
免疫原	KLH conjugated synthetic peptide selected from the center of Human LMAN1.
ポジティブ・コントロール	NCI-H460 or NIH-3T3 cell line lysates

製品の特性

製品の状態	Liquid
保存方法	Shipped at 4°C. Store at 4°C (up to 6 months). Store at -20°C long term.
バッファー	Preservative: 0.09% Sodium Azide Constituents: PBS
精製度	Immunogen affinity purified
特記事項 (精製)	This antibody is purified through a protein A column, followed by peptide affinity purification.
ポリ/モノ	ポリクローナル
アイソタイプ	IgG

アプリケーション

Our [Abpromise guarantee](#) covers the use of **ab93177** in the following tested applications.

The application notes include recommended starting dilutions; optimal dilutions/concentrations should be determined by the end user.

アプリケーション	Abreviews	特記事項
----------	-----------	------

WB

追加情報

WB: 1/100 - 1/500. Predicted molecular weight: 57 kDa.

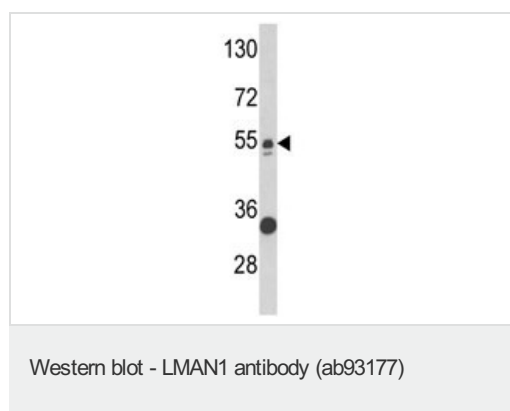
Not yet tested in other applications.

Optimal dilutions/concentrations should be determined by the end user.

ターゲット情報

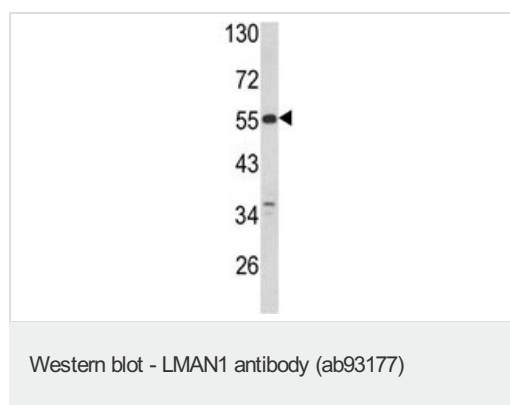
機能	Mannose-specific lectin. May recognize sugar residues of glycoproteins, glycolipids, or glycosylphosphatidyl inositol anchors and may be involved in the sorting or recycling of proteins, lipids, or both. The LMAN1-MCFD2 complex forms a specific cargo receptor for the ER-to-Golgi transport of selected proteins.
組織特異性	Ubiquitous.
関連疾患	Defects in LMAN1 are THE cause of factor V and factor VIII combined deficiency type 1 (F5F8D1) [MIM:227300]; also known as multiple coagulation factor deficiency I (MCFD1). F5F8D1 is an autosomal recessive blood coagulation disorder characterized by bleeding symptoms similar to those in hemophilia or parahemophilia, that are caused by single deficiency of FV or FVIII, respectively. The most common symptoms are epistaxis, menorrhagia, and excessive bleeding during or after trauma. Plasma levels of coagulation factors V and VIII are in the range of 5 to 30% of normal.
配列類似性	Contains 1 L-type lectin-like domain.
翻訳後修飾	The N-terminal may be partly blocked.
細胞内局在	Endoplasmic reticulum-Golgi intermediate compartment membrane. Golgi apparatus membrane. Endoplasmic reticulum membrane.

画像



Anti-LMAN1 antibody (ab93177) at 1/100 dilution + NCI-H460 cell line lysates at 35 µg

Predicted band size: 57 kDa



Anti-LMAN1 antibody (ab93177) at 1/100 dilution + NIH-3T3 cell line lysates at 35 µg

Predicted band size: 57 kDa

Our Abpromise to you: Quality guaranteed and expert technical support

- Replacement or refund for products not performing as stated on the datasheet
- Valid for 12 months from date of delivery
- Response to your inquiry within 24 hours

- We provide support in Chinese, English, French, German, Japanese and Spanish
- Extensive multi-media technical resources to help you
- We investigate all quality concerns to ensure our products perform to the highest standards

If the product does not perform as described on this datasheet, we will offer a refund or replacement. For full details of the Abpromise, please visit <http://www.abcam.co.jp/abpromise> or contact our technical team.

Terms and conditions

- Guarantee only valid for products bought direct from Abcam or one of our authorized distributors