

## Product datasheet

# Anti-Creatine kinase MT antibody ab93029

画像数 2

### 製品の概要

製品名	Anti-Creatine kinase MT antibody
製品の詳細	Mouse monoclonal to Creatine kinase MT
由来種	Mouse
アプリケーション	<b>適用あり:</b> WB, ELISA
種交差性	<b>交差種:</b> Human
免疫原	Recombinant fragment: GVHIKLP LLS KDSRFPKILE NLRLQKRG TG GVDTAATGGV FDISNLDRLG KSEVELVQLV IDGVNYLIDC ERRLERGQDI RIPTPVIHTK H, corresponding to amino acids 327-418 of Human Creatine kinase MT (NP_066270) <a href="#">Run BLAST with ExPASy</a> <a href="#">Run BLAST with NCBI</a>
ポジティブ・コントロール	A431 Human epithelial carcinoma cell lysate

### 製品の特性

製品の状態	Liquid
保存方法	Shipped at 4°C. Upon delivery aliquot. Store at -20°C or -80°C. Avoid freeze / thaw cycle.
バッファー	Preservative: None Constituents: 1X PBS, pH 7.2
精製度	Protein A purified
ポリ/モノ	モノクローナル
アイソタイプ	IgG1
軽鎖の種類	kappa

### アプリケーション

Our [Abpromise guarantee](#) covers the use of **ab93029** in the following tested applications.

The application notes include recommended starting dilutions; optimal dilutions/concentrations should be determined by the end user.

アプリケーション	Abreviews	特記事項
WB		

ELISA

## 追加情報

ELISA: Use at an assay dependent dilution.

WB: Use at a concentration of 1 - 5 µg/ml. Predicted molecular weight: 46 kDa.

Not yet tested in other applications.

Optimal dilutions/concentrations should be determined by the end user.

## ターゲット情報

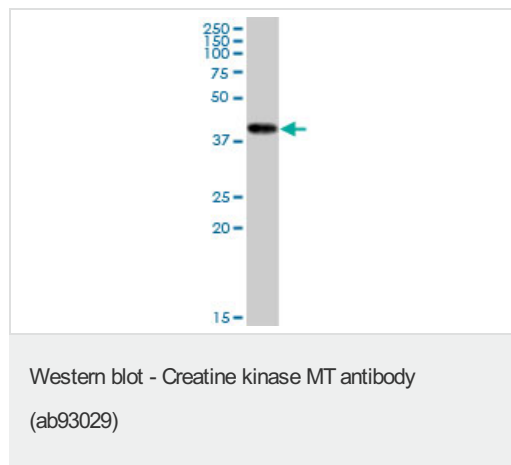
## 関連性

Creatine kinase MT is responsible for the transfer of high energy phosphate from mitochondria to the cytosolic carrier, creatine. It belongs to the creatine kinase isoenzyme family. It exists as two isoenzymes, sarcomeric MtCK and ubiquitous MtCK, encoded by separate genes. Creatine kinase MT occurs in two different oligomeric forms: dimers and octamers, in contrast to the exclusively dimeric cytosolic creatine kinase isoenzymes. Many malignant cancers with poor prognosis have shown overexpression of ubiquitous mitochondrial creatine kinase, this may be related to high energy turnover and failure to eliminate cancer cells via apoptosis. Ubiquitous mitochondrial creatine kinase has 80% homology with the coding exons of sarcomeric mitochondrial creatine kinase.

## 細胞内局在

Cell Membrane and Mitochondrial

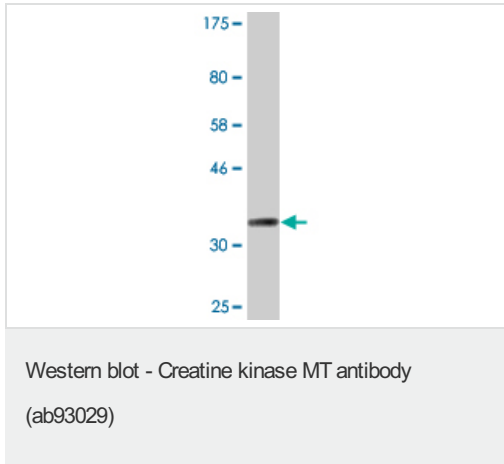
## 画像



Anti-Creatine kinase MT antibody (ab93029)

at 5 µg/ml + A-431 cell lysate at 50 µg

**Predicted band size: 46 kDa**



Anti-Creatine kinase MT antibody (ab93029)  
at 5 µg/ml + Immunogen at 0.2 µg

**Predicted band size:** 46 kDa

**Please note:** All products are "FOR RESEARCH USE ONLY AND ARE NOT INTENDED FOR DIAGNOSTIC OR THERAPEUTIC USE"

### Our Abpromise to you: Quality guaranteed and expert technical support

- Replacement or refund for products not performing as stated on the datasheet
- Valid for 12 months from date of delivery
- Response to your inquiry within 24 hours
- We provide support in Chinese, English, French, German, Japanese and Spanish
- Extensive multi-media technical resources to help you
- We investigate all quality concerns to ensure our products perform to the highest standards

If the product does not perform as described on this datasheet, we will offer a refund or replacement. For full details of the Abpromise, please visit <http://www.abcam.co.jp/abpromise> or contact our technical team.

### Terms and conditions

- Guarantee only valid for products bought direct from Abcam or one of our authorized distributors