

Product datasheet

Anti-DATF1 antibody [3B1] ab92868

3 References [画像数 4](#)

製品の概要

製品名	Anti-DATF1 antibody [3B1]
製品の詳細	Mouse monoclonal [3B1] to DATF1
由来種	Mouse
アプリケーション	適用あり: WB, ELISA, ICC/IF, Flow Cyt
種交差性	交差種: Human
免疫原	Recombinant fragment corresponding to Human DATF1 aa 321-420. Sequence: ILQVQDETHSETADQQEAKWRPGDADGTDCTSIGTIEQKSSDQGIKGR I EKAANPSGKKLKI FQPVIEAPGASKCIGPGCCHVAQPDSVYCSNDCILK Database link: Q9BTC0
	Run BLAST with Run BLAST with
ポジティブ・コントロール	HepG2 cell lysate

製品の特性

製品の状態	Liquid
保存方法	Shipped at 4°C. Upon delivery aliquot and store at -20°C or -80°C. Avoid repeated freeze / thaw cycles.
バッファー	pH: 7.4 Constituent: 2.68% PBS
精製度	Protein A purified
ポリ/モノ	モノクローナル
クローン名	3B1
アイソタイプ	IgG1
軽鎖の種類	kappa

アプリケーション

Our [Abpromise guarantee](#) covers the use of **ab92868** in the following tested applications.

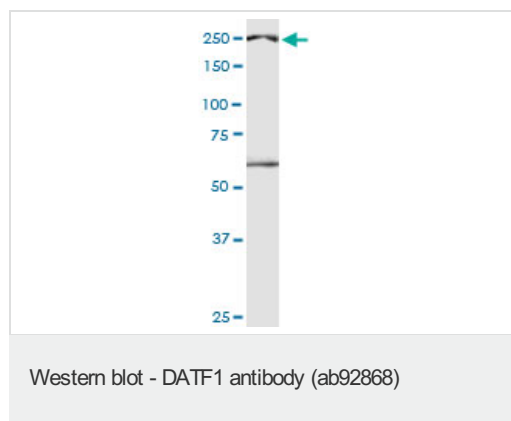
The application notes include recommended starting dilutions; optimal dilutions/concentrations should be determined by the end user.

アプリケーション	Abreviews	特記事項
WB		Use a concentration of 1 - 5 µg/ml. Predicted molecular weight: 244 kDa.
ELISA		Use at an assay dependent concentration.
ICC/IF		Use at an assay dependent concentration.
Flow Cyt		Use 0.1µg for 10 ⁶ cells. ab170190 - Mouse monoclonal IgG1, is suitable for use as an isotype control with this antibody.

ターゲット情報

機能	Putative transcription factor, weakly pro-apoptotic when overexpressed (By similarity). Tumor suppressor.
組織特異性	Ubiquitous.
配列類似性	Contains 1 PHD-type zinc finger. Contains 1 TFIIIS central domain.
細胞内局在	Cytoplasm. Nucleus. Translocates to the nucleus after pro-apoptotic stimuli.

画像

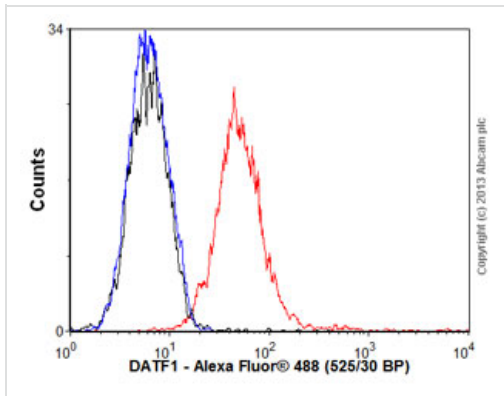


Anti-DATF1 antibody [3B1] (ab92868) at 5 µg/ml + HepG2 cell lysate at 25 µg

Secondary

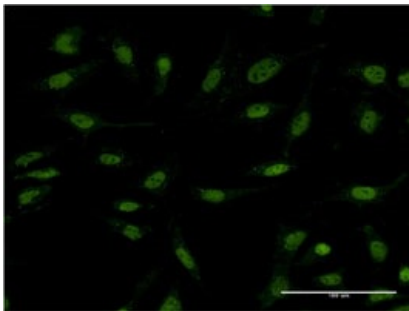
Goat anti-Mouse IgG HRP conjugated at 1/2500 dilution

Predicted band size: 244 kDa



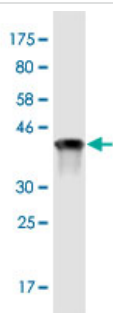
Flow Cytometry - Anti-DATF1 antibody (ab92868)

Overlay histogram showing HepG2 cells stained with ab92868 (red line). The cells were fixed with 80% methanol (5 min) and then permeabilized with 0.1% PBS-Tween for 20 min. The cells were then incubated in 1x PBS / 10% normal goat serum / 0.3M glycine to block non-specific protein-protein interactions followed by the antibody (ab92868, 0.1µg/1x10⁶ cells) for 30 min at 22°C. The secondary antibody used was Alexa Fluor® 488 goat anti-mouse IgG (H+L) (ab150113) at 1/2000 dilution for 30 min at 22°C. Isotype control antibody (black line) was mouse IgG1 [ICIGG1] (ab91353, 1µg/1x10⁶ cells) used under the same conditions. Unlabelled sample (blue line) was also used as a control. Acquisition of >5,000 events were collected using a 20mW Argon ion laser (488nm) and 525/30 bandpass filter.



Immunocytochemistry/ Immunofluorescence - Anti-DATF1 antibody [3B1] (ab92868)

Immunofluorescence analysis of ab92868 on HeLa cell at concentration 10 µg/ml



Western blot - DATF1 antibody (ab92868)

Anti-DATF1 antibody [3B1] (ab92868) at 5 µg/ml + immunogen (80aa recombinant fragment with a tag of 26kDa) at 0.2 µg

Secondary

Goat anti-Mouse IgG HRP conjugated at 1/5000 dilution

Predicted band size: 244 kDa

Our Abpromise to you: Quality guaranteed and expert technical support

- Replacement or refund for products not performing as stated on the datasheet
- Valid for 12 months from date of delivery
- Response to your inquiry within 24 hours

- We provide support in Chinese, English, French, German, Japanese and Spanish
- Extensive multi-media technical resources to help you
- We investigate all quality concerns to ensure our products perform to the highest standards

If the product does not perform as described on this datasheet, we will offer a refund or replacement. For full details of the Abpromise, please visit <http://www.abcam.co.jp/abpromise> or contact our technical team.

Terms and conditions

- Guarantee only valid for products bought direct from Abcam or one of our authorized distributors