

## Product datasheet

# Anti-OR51H1P antibody ab92795

### 画像数 1

#### 製品の概要

製品名	Anti-OR51H1P antibody
製品の詳細	Rabbit polyclonal to OR51H1P
由来種	Rabbit
アプリケーション	<b>適用あり:</b> WB, ELISA
種交差性	<b>交差種:</b> Human
免疫原	Synthetic peptide derived from the internal region of Human OR51H1P.
ポジティブ・コントロール	Extracts from MCF7 cells.

#### 製品の特性

製品の状態	Liquid
保存方法	Shipped at 4°C. Store at -20°C. Stable for 12 months at -20°C.
バッファー	Preservative: 0.02% Sodium Azide Constituents: 50% Glycerol, PBS (without Mg <sup>2+</sup> and Ca <sup>2+</sup> ), 150mM Sodium chloride, pH 7.4
精製度	Immunogen affinity purified
特記事項 (精製)	ab92795 was affinity-purified from rabbit antiserum by affinity-chromatography using an epitope-specific immunogen.
ポリ/モノ	ポリクローナル
アイソタイプ	IgG

#### アプリケーション

Our [Abpromise guarantee](#) covers the use of **ab92795** in the following tested applications.

The application notes include recommended starting dilutions; optimal dilutions/concentrations should be determined by the end user.

アプリケーション	Abreviews	特記事項
WB		
ELISA		

## 追加情報

ELISA: 1/10000.

WB: 1/500 - 1/1000. Predicted molecular weight: 34 kDa.

Not yet tested in other applications.

Optimal dilutions/concentrations should be determined by the end user.

## ターゲット情報

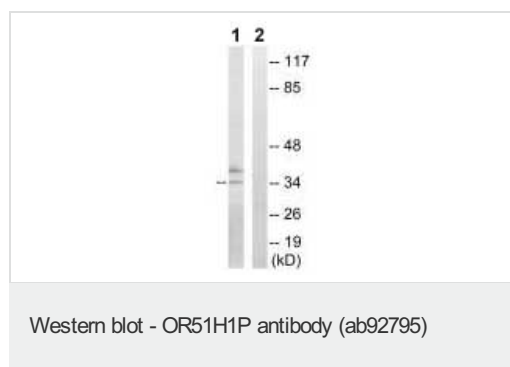
### 関連性

Olfactory receptors interact with odorant molecules in the nose, to initiate a neuronal response that triggers the perception of a smell. The olfactory receptor proteins are members of a large family of G-protein-coupled receptors (GPCR) arising from single coding-exon genes. Olfactory receptors share a 7-transmembrane domain structure with many neurotransmitter and hormone receptors and are responsible for the recognition and G protein-mediated transduction of odorant signals. The olfactory receptor gene family is the largest in the genome. The nomenclature assigned to the olfactory receptor genes and proteins for this organism is independent of other organisms.

### 細胞内局在

Cell membrane; Multi-pass membrane protein

## 画像



**All lanes :** Anti-OR51H1P antibody (ab92795) at 1/500 dilution

**Lane 1 :** Extracts from MCF7 cells

**Lane 2 :** Extracts from MCF7 cells with immunising peptide at 10 µg

Lysates/proteins at 30 µg per lane.

**Predicted band size:** 34 kDa

**Please note:** All products are "FOR RESEARCH USE ONLY AND ARE NOT INTENDED FOR DIAGNOSTIC OR THERAPEUTIC USE"

## Our Promise to you: Quality guaranteed and expert technical support

- Replacement or refund for products not performing as stated on the datasheet
- Valid for 12 months from date of delivery
- Response to your inquiry within 24 hours
- We provide support in Chinese, English, French, German, Japanese and Spanish
- Extensive multi-media technical resources to help you
- We investigate all quality concerns to ensure our products perform to the highest standards

If the product does not perform as described on this datasheet, we will offer a refund or replacement. For full details of the Abpromise, please visit <http://www.abcam.co.jp/abpromise> or contact our technical team.

## Terms and conditions

---

- Guarantee only valid for products bought direct from Abcam or one of our authorized distributors