

Product datasheet

Anti-EFEMP1 antibody ab92725

★☆☆☆☆ 1 Abreviews [画像数 1](#)

製品の概要

製品名	Anti-EFEMP1 antibody
製品の詳細	Rabbit polyclonal to EFEMP1
由来種	Rabbit
アプリケーション	適用あり: ELISA, WB
種交差性	交差種: Rat, Human 交差が予測される動物種: Mouse
免疫原	Synthetic peptide derived from an internal region of Human EFEMP1.
ポジティブ・コントロール	Extracts from Rat lung cells

製品の特性

製品の状態	Liquid
保存方法	Shipped at 4°C. Upon delivery aliquot and store at -20°C. Avoid repeated freeze / thaw cycles.
バッファー	Preservative: 0.02% Sodium Azide Constituents: 50% Glycerol, PBS (without Mg ²⁺ and Ca ²⁺), 150mM Sodium chloride, pH 7.4
精製度	Immunogen affinity purified
ポリ/モノ	ポリクローナル
アイソタイプ	IgG

アプリケーション

Our [Abpromise guarantee](#) covers the use of **ab92725** in the following tested applications.

The application notes include recommended starting dilutions; optimal dilutions/concentrations should be determined by the end user.

アプリケーション	Abreviews	特記事項
----------	-----------	------

ELISA

WB

★☆☆☆☆

追加情報

ELISA: 1/20000.

WB: 1/500 - 1/1000. Predicted molecular weight: 55 kDa.

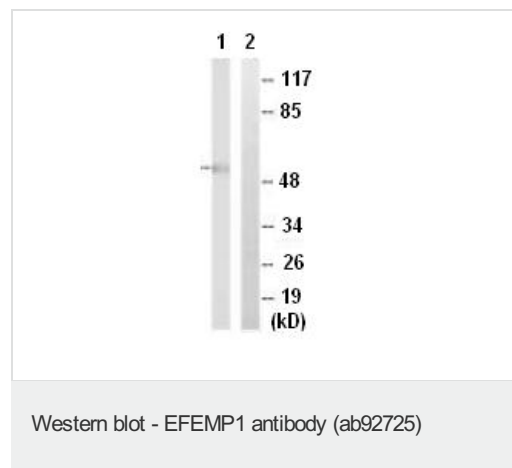
Not yet tested in other applications.

Optimal dilutions/concentrations should be determined by the end user.

ターゲット情報

機能	Binds EGFR, the EGF receptor, inducing EGFR autophosphorylation and the activation of downstream signaling pathways. May play a role in cell adhesion and migration. May function as a negative regulator of chondrocyte differentiation. In the olfactory epithelium, it may regulate glial cell migration, differentiation and the ability of glial cells to support neuronal neurite outgrowth.
組織特異性	In the eye, associated with photoreceptor outer and inner segment regions, the nerve fiber layer, outer nuclear layer and inner and outer plexiform layers of the retina.
関連疾患	Defects in EFEMP1 are a cause of Doyme honeycomb retinal dystrophy (DHRD) [MIM:126600]; also known as malattia leventinese (MLVT) (ML). DHRD is an autosomal dominant disease characterized by yellow-white deposits known as drusen that accumulate beneath the retinal pigment epithelium.
配列類似性	Belongs to the fibulin family. Contains 6 EGF-like domains.
細胞内局在	Secreted > extracellular space. Secreted > extracellular space > extracellular matrix. Localizes to the lamina propria underneath the olfactory epithelium.

画像



All lanes : Anti-EFEMP1 antibody (ab92725)
at 1/500 dilution

Lane 1 : extracts from Rat lung cells

Lane 2 : extracts from Rat lung cells with
immunizing peptide at 5 µg

Lysates/proteins at 10 µg per lane.

Predicted band size: 55 kDa

Please note: All products are "FOR RESEARCH USE ONLY AND ARE NOT INTENDED FOR DIAGNOSTIC OR THERAPEUTIC USE"

Our Abpromise to you: Quality guaranteed and expert technical support

- Replacement or refund for products not performing as stated on the datasheet
- Valid for 12 months from date of delivery
- Response to your inquiry within 24 hours

- We provide support in Chinese, English, French, German, Japanese and Spanish
- Extensive multi-media technical resources to help you
- We investigate all quality concerns to ensure our products perform to the highest standards

If the product does not perform as described on this datasheet, we will offer a refund or replacement. For full details of the Abpromise, please visit <http://www.abcam.co.jp/abpromise> or contact our technical team.

Terms and conditions

- Guarantee only valid for products bought direct from Abcam or one of our authorized distributors