


Product datasheet

Anti-ARHGEF7 antibody ab92657

画像数 1

製品の概要

製品名	Anti-ARHGEF7 antibody
製品の詳細	Rabbit polyclonal to ARHGEF7
特異性	Detects endogenous levels of total ARHGEF7 protein.
アプリケーション	適用あり: WB, ELISA
種交差性	交差種: Rat, Human 交差が予測される動物種: Mouse 
免疫原	Synthetic peptide from an internal region of Human ARHGEF7
ポジティブ・コントロール	Rat muscle lysate, Rat heart lysate

製品の特性

製品の状態	Liquid
保存方法	Shipped at 4°C. Upon delivery aliquot and store at -20°C. Avoid freeze / thaw cycles.
バッファー	Preservative: 0.02% Sodium Azide Constituents: 50% Glycerol, PBS, 150mM Sodium chloride, pH 7.4
精製度	Immunogen affinity purified
ポリ/モノ	ポリクローナル
アイソタイプ	IgG

アプリケーション

Our [Abpromise guarantee](#) covers the use of **ab92657** in the following tested applications.

The application notes include recommended starting dilutions; optimal dilutions/concentrations should be determined by the end user.

アプリケーション	Abreviews	特記事項
----------	-----------	------

WB

ELISA

追加情報 ELISA: 1/40000.

WB: 1/500 - 1/1000. Predicted molecular weight: 90 kDa.

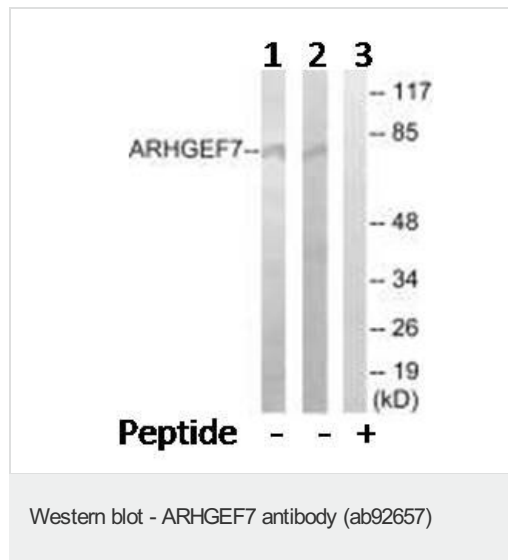
Not yet tested in other applications.

Optimal dilutions/concentrations should be determined by the end user.

## ターゲット情報

<b>機能</b>	Acts as a RAC1 guanine nucleotide exchange factor (GEF) and can induce membrane ruffling. May function as a positive regulator of apoptosis. May function in cell migration.
<b>配列類似性</b>	Contains 1 CH (calponin-homology) domain. Contains 1 DH (DBL-homology) domain. Contains 1 PH domain. Contains 1 SH3 domain.

## 画像



**All lanes :** Anti-ARHGEF7 antibody (ab92657) at 1/500 dilution

**Lane 1 :** Rat heart lysate

**Lane 2 :** Rat muscle lysate

**Lane 3 :** Rat heart lysate with blocking peptide at 10 µg

Lysates/proteins at 30 µg per lane.

**Predicted band size :** 90 kDa

**Please note:** All products are "FOR RESEARCH USE ONLY AND ARE NOT INTENDED FOR DIAGNOSTIC OR THERAPEUTIC USE"

## Our Abpromise to you: Quality guaranteed and expert technical support

- Replacement or refund for products not performing as stated on the datasheet
- Valid for 12 months from date of delivery
- Response to your inquiry within 24 hours
- We provide support in Chinese, English, French, German, Japanese and Spanish
- Extensive multi-media technical resources to help you
- We investigate all quality concerns to ensure our products perform to the highest standards

If the product does not perform as described on this datasheet, we will offer a refund or replacement. For full details of the Abpromise, please visit <http://www.abcam.co.jp/abpromise> or contact our technical team.

## Terms and conditions

---

- Guarantee only valid for products bought direct from Abcam or one of our authorized distributors