

Product datasheet

Anti-TCP1 alpha antibody - C-terminal ab91232

画像数 3

製品の概要

製品名	Anti-TCP1 alpha antibody - C-terminal
製品の詳細	Rabbit polyclonal to TCP1 alpha - C-terminal
由来種	Rabbit
アプリケーション	適用あり: IHC-P, WB, ELISA
種交差性	交差種: Mouse, Human
免疫原	A KLH conjugated synthetic peptide selected from the C terminal region of Human TCP1 alpha
ポジティブ・コントロール	K562 cell line lysates and mouse testis tissue lysates IHC-P: FFPE human testis seminoma tissue sections.

製品の特性

製品の状態	Liquid
保存方法	Shipped at 4°C. Upon delivery aliquot and store at -20°C. Avoid repeated freeze / thaw cycles.
バッファー	Preservative: 0.09% Sodium Azide Constituents: PBS
精製度	Ammonium Sulphate Precipitation
特記事項 (精製)	ab91232 is purified by Saturated Ammonium Sulfate (SAS) precipitation followed by dialysis against PBS.
ポリ/モノ	ポリクローナル
アイソタイプ	IgG

アプリケーション

Our [Abpromise guarantee](#) covers the use of **ab91232** in the following tested applications.

The application notes include recommended starting dilutions; optimal dilutions/concentrations should be determined by the end user.

アプリケーション	Abreviews	特記事項
IHC-P		
WB		

ELISA

追加情報

ELISA: 1/1000.

WB: 1/50 - 1/100. Predicted molecular weight: 60 kDa.

Not yet tested in other applications.

Optimal dilutions/concentrations should be determined by the end user.

ターゲット情報**機能**

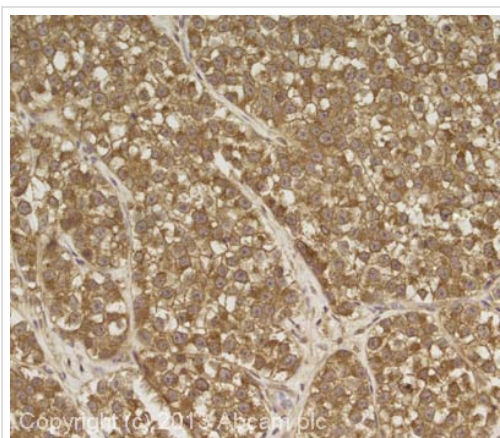
Molecular chaperone; assists the folding of proteins upon ATP hydrolysis. As part of the BBS/CCT complex may play a role in the assembly of BBSome, a complex involved in ciliogenesis regulating transports vesicles to the cilia. Known to play a role, in vitro, in the folding of actin and tubulin.

配列類似性

Belongs to the TCP-1 chaperonin family.

細胞内局在

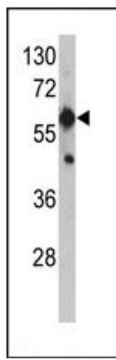
Cytoplasm. Cytoplasm > cytoskeleton > centrosome.

画像

Immunohistochemistry (Formalin/PFA-fixed paraffin-embedded sections) - Anti-TCP1 alpha antibody - C-terminal (ab91232)

IHC image of TCP1 staining in human testis seminoma formalin fixed paraffin embedded tissue section, performed on a Leica Bond system using the standard protocol F. The section was pre-treated using heat mediated antigen retrieval with sodium citrate buffer (pH6, epitope retrieval solution 1) for 20 mins. The section was then incubated with ab91232, 1µg/ml, for 15 mins at room temperature and detected using an HRP conjugated compact polymer system. DAB was used as the chromogen. The section was then counterstained with haematoxylin and mounted with DPX.

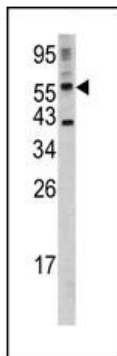
For other IHC staining systems (automated and non-automated) customers should optimize variable parameters such as antigen retrieval conditions, primary antibody concentration and antibody incubation times.



Western blot - TCP1 alpha antibody - C-terminal
(ab91232)

Anti-TCP1 alpha antibody - C-terminal
(ab91232) at 1/50 dilution + K562 cell line
lysates at 35 μ g

Predicted band size: 60 kDa



Western blot - TCP1 alpha antibody - C-terminal
(ab91232)

Anti-TCP1 alpha antibody - C-terminal
(ab91232) at 1/50 dilution + mouse testis
tissue lysates at 35 μ g

Predicted band size: 60 kDa

Please note: All products are "FOR RESEARCH USE ONLY AND ARE NOT INTENDED FOR DIAGNOSTIC OR THERAPEUTIC USE"

Our Abpromise to you: Quality guaranteed and expert technical support

- Replacement or refund for products not performing as stated on the datasheet
- Valid for 12 months from date of delivery
- Response to your inquiry within 24 hours
- We provide support in Chinese, English, French, German, Japanese and Spanish
- Extensive multi-media technical resources to help you
- We investigate all quality concerns to ensure our products perform to the highest standards

If the product does not perform as described on this datasheet, we will offer a refund or replacement. For full details of the Abpromise, please visit <http://www.abcam.co.jp/abpromise> or contact our technical team.

Terms and conditions

- Guarantee only valid for products bought direct from Abcam or one of our authorized distributors