

Product datasheet

Anti-Ndufs1 antibody ab89768

画像数 2

製品の概要

製品名	Anti-Ndufs1 antibody
製品の詳細	Mouse polyclonal to Ndufs1
アプリケーション	適用あり: WB
種交差性	交差種: Human
免疫原	Full length Human Ndufs1 (NP_004997.4)
ポジティブ・コントロール	Human spleen tissue lysate, Ndufs1 transfected 293T cell lysate.

製品の特性

製品の状態	Liquid
保存方法	Shipped at 4°C. Upon delivery aliquot and store at -20°C or -80°C. Avoid repeated freeze / thaw cycles.
バッファー	Preservative: None Constituents: 1X PBS, pH 7.2
精製度	Protein A purified
ポリ/モノ	ポリクローナル
アイソタイプ	IgG

アプリケーション

Our [Abpromise guarantee](#) covers the use of **ab89768** in the following tested applications.

The application notes include recommended starting dilutions; optimal dilutions/concentrations should be determined by the end user.

アプリケーション	Abreviews	特記事項
WB		Use a concentration of 1 µg/ml. Predicted molecular weight: 79 kDa.

ターゲット情報

機能	Core subunit of the mitochondrial membrane respiratory chain NADH dehydrogenase (Complex I) that is believed to belong to the minimal assembly required for catalysis. Complex I functions in the transfer of electrons from NADH to the respiratory chain. The immediate electron acceptor
----	---

for the enzyme is believed to be ubiquinone (By similarity). This is the largest subunit of complex I and it is a component of the iron-sulfur (IP) fragment of the enzyme. It may form part of the active site crevice where NADH is oxidized.

#### 関連疾患

Defects in NDUFS1 are a cause of mitochondrial complex I deficiency (MT-C1D) [MIM:252010]. A disorder of the mitochondrial respiratory chain that causes a wide range of clinical disorders, from lethal neonatal disease to adult-onset neurodegenerative disorders. Phenotypes include macrocephaly with progressive leukodystrophy, non-specific encephalopathy, cardiomyopathy, myopathy, liver disease, Leigh syndrome, Leber hereditary optic neuropathy, and some forms of Parkinson disease.

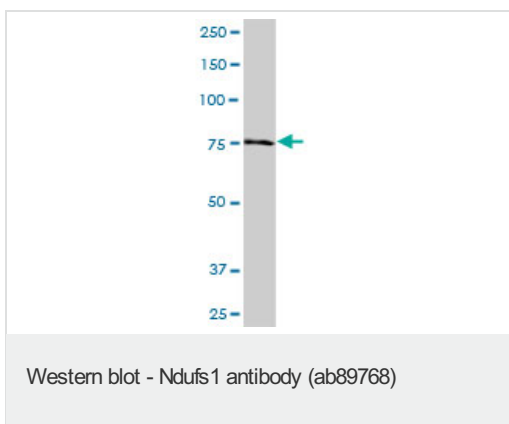
#### 配列類似性

Belongs to the complex I 75 kDa subunit family.  
Contains 1 2Fe-2S ferredoxin-type domain.

#### 細胞内局在

Mitochondrion inner membrane.

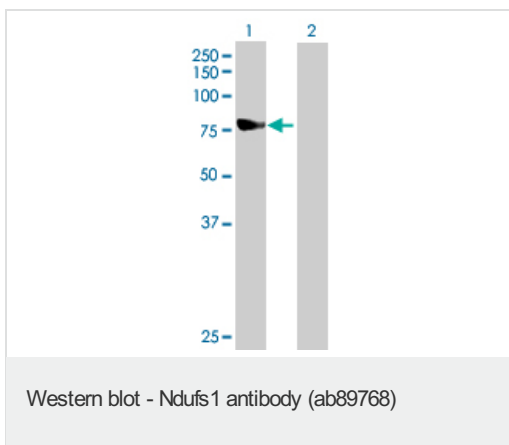
### Anti-Ndufs1 antibody 画像



Anti-Ndufs1 antibody (ab89768) at 1  $\mu$ g/ml +  
human spleen tissue lysate at 50  $\mu$ g

**Predicted band size :** 79 kDa

**Observed band size :** 79 kDa



**All lanes :** Anti-Ndufs1 antibody (ab89768) at  
1  $\mu$ g/ml

**Lane 1 :** Ndufs1 transfected lysate

**Lane 2 :** Non-transfected lysate

Lysates/proteins at 25  $\mu$ g per lane.

**Predicted band size :** 79 kDa

**Observed band size :** 79 kDa

**Please note:** All products are "FOR RESEARCH USE ONLY AND ARE NOT INTENDED FOR DIAGNOSTIC OR THERAPEUTIC USE"

### Our Abpromise to you: Quality guaranteed and expert technical support

- Replacement or refund for products not performing as stated on the datasheet
- Valid for 12 months from date of delivery
- Response to your inquiry within 24 hours
- We provide support in Chinese, English, French, German, Japanese and Spanish
- Extensive multi-media technical resources to help you

- We investigate all quality concerns to ensure our products perform to the highest standards

If the product does not perform as described on this datasheet, we will offer a refund or replacement. For full details of the Abpromise, please visit <http://www.abcam.co.jp/abpromise> or contact our technical team.

## Terms and conditions

---

- Guarantee only valid for products bought direct from Abcam or one of our authorized distributors