

Product datasheet

Anti-EMAP II antibody ab89506

画像数 3

製品の概要

製品名	Anti-EMAP II antibody
製品の詳細	Mouse monoclonal to EMAP II
由来種	Mouse
アプリケーション	適用あり: WB, ELISA
種交差性	交差種: Human
免疫原	Recombinant full length Human EMAP II with proprietary tag (AAH14051)
ポジティブ・コントロール	Jurkat cell lysate

製品の特性

製品の状態	Liquid
保存方法	Shipped at 4°C. Upon delivery aliquot and store at -20°C or -80°C. Avoid repeated freeze / thaw cycles.
バッファー	Preservative: None Constituents: 1X PBS, pH 7.2
精製度	Protein A purified
ポリ/モノ	モノクローナル
アイソタイプ	IgG2a
軽鎖の種類	kappa

アプリケーション

Our [Abpromise guarantee](#) covers the use of **ab89506** in the following tested applications.

The application notes include recommended starting dilutions; optimal dilutions/concentrations should be determined by the end user.

アプリケーション	Abreviews	特記事項
WB		Use a concentration of 1 - 5 µg/ml. Predicted molecular weight: 34 kDa.
ELISA		Use at an assay dependent dilution.

ターゲット情報

機能

Non-catalytic component of the multisynthase complex. Stimulates the catalytic activity of cytoplasmic arginyl-tRNA synthase. Binds tRNA. Possesses inflammatory cytokine activity. Negatively regulates TGF-beta signaling through stabilization of SMURF2 by binding to SMURF2 and inhibiting its SMAD7-mediated degradation. Involved in glucose homeostasis through induction of glucagon secretion at low glucose levels. Promotes dermal fibroblast proliferation and wound repair. Regulates KDELR1-mediated retention of HSP90B1/gp96 in the endoplasmic reticulum. Plays a role in angiogenesis by inducing endothelial cell migration at low concentrations and endothelial cell apoptosis at high concentrations. Induces maturation of dendritic cells and monocyte cell adhesion. Modulates endothelial cell responses by degrading HIF-1A through interaction with PSMA7.

関連疾患

Defects in AIMP1 are the cause of leukodystrophy hypomyelinating type 3 (HLD3) [MIM:260600]. A severe autosomal recessive hypomyelinating leukodystrophy characterized by early infantile onset of global developmental delay, lack of development, lack of speech acquisition, and peripheral spasticity associated with decreased myelination in the central nervous system.

配列類似性

Contains 1 tRNA-binding domain.

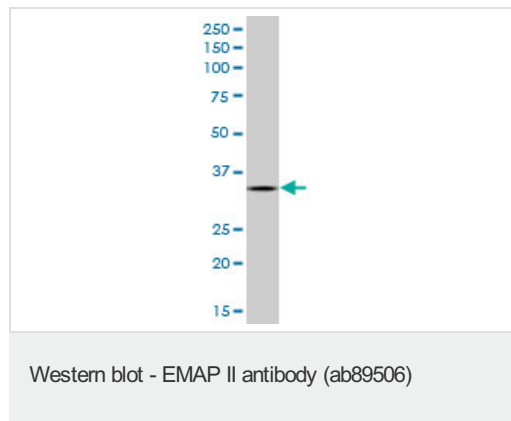
翻訳後修飾

Cleaved by caspase-7 in response to apoptosis to produce EMAP-II.

細胞内局在

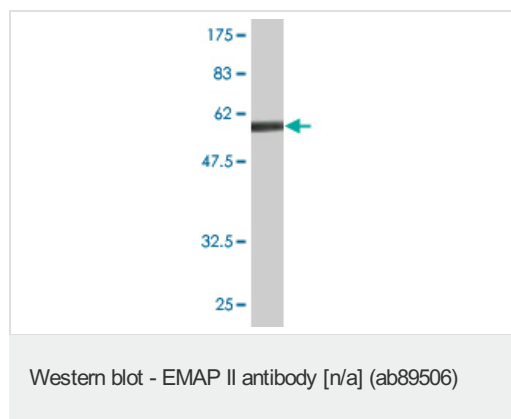
Nucleus. Cytoplasm > cytosol. Cytoplasmic vesicle > secretory vesicle. Secreted. Endoplasmic reticulum. Golgi apparatus. Enriched in secretory vesicles of pancreatic alpha cells and secreted from the pancreas in response to low glucose levels (By similarity). Also secreted in response to hypoxia and both apoptotic and necrotic cell death.

画像



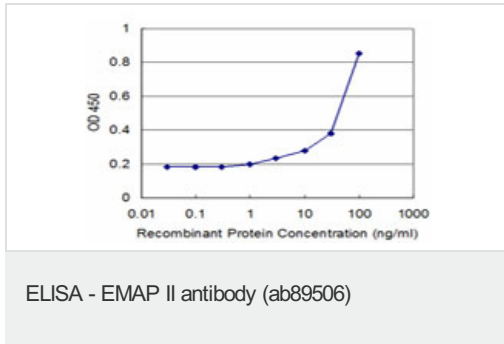
Anti-EMAP II antibody (ab89506) at 5 µg/ml +
Jurkat cell lysate at 50 µg

Predicted band size: 34 kDa



Anti-EMAP II antibody (ab89506) at 5 µg/ml +
immunogen (recombinant protein, 60.06 kDa)
at 0.2 µg

Predicted band size: 34 kDa



Detection limit for recombinant EMAP II is approximately 3ng/ml as a capture antibody.

Please note: All products are "FOR RESEARCH USE ONLY AND ARE NOT INTENDED FOR DIAGNOSTIC OR THERAPEUTIC USE"

Our Abpromise to you: Quality guaranteed and expert technical support

- Replacement or refund for products not performing as stated on the datasheet
- Valid for 12 months from date of delivery
- Response to your inquiry within 24 hours
- We provide support in Chinese, English, French, German, Japanese and Spanish
- Extensive multi-media technical resources to help you
- We investigate all quality concerns to ensure our products perform to the highest standards

If the product does not perform as described on this datasheet, we will offer a refund or replacement. For full details of the Abpromise, please visit <http://www.abcam.co.jp/abpromise> or contact our technical team.

Terms and conditions

- Guarantee only valid for products bought direct from Abcam or one of our authorized distributors