

## Product datasheet

# Anti-ALS2CR1 antibody ab89282

### 画像数 2

#### 製品の概要

製品名	Anti-ALS2CR1 antibody
製品の詳細	Mouse polyclonal to ALS2CR1
由来種	Mouse
アプリケーション	適用あり: WB
種交差性	交差種: Human
免疫原	Full length Human ALS2CR1 isoform 2 Q9G2T8 (NP_068596.2).
ポジティブ・コントロール	Human kidney tissue lysate. Cell lysate from transfected 293T cells.

#### 製品の特性

製品の状態	Liquid
保存方法	Shipped at 4°C. Upon delivery aliquot and store at -20°C or -80°C. Avoid repeated freeze / thaw cycles.
バッファー	Preservative: None Constituents: 1 x PBS, pH 7.2
精製度	Protein A purified
ポリ/モノ	ポリクローナル
アイソタイプ	IgG

#### アプリケーション

Our [Abpromise guarantee](#) covers the use of **ab89282** in the following tested applications.

The application notes include recommended starting dilutions; optimal dilutions/concentrations should be determined by the end user.

アプリケーション	Abreviews	特記事項
WB		Use a concentration of 1 µg/ml. Predicted molecular weight: 42 kDa.

#### ターゲット情報

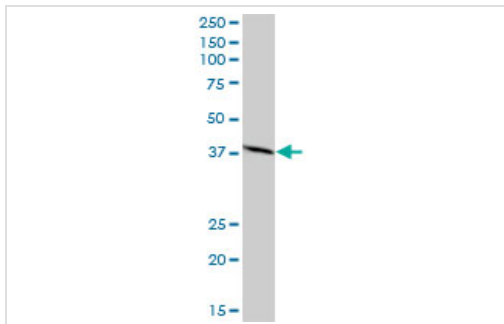
配列類似性

Belongs to the UPF0135 (NIF3) family.

細胞内局在

Cytoplasm.

## 画像



Western blot - ALS2CR1 antibody (ab89282)

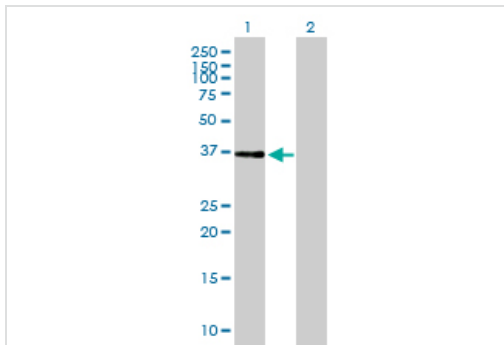
Anti-ALS2CR1 antibody (ab89282) at 1  $\mu$ g/ml

+ Human kidney tissue lysate at 50  $\mu$ g

Developed using the ECL technique.

**Predicted band size:** 42 kDa

**Observed band size:** ~40 kDa



Western blot - ALS2CR1 antibody (ab89282)

**All lanes :** Anti-ALS2CR1 antibody (ab89282) at 1  $\mu$ g/ml

**Lane 1 :** cell lysate from ALS2CR1 transfected 293T cells

**Lane 2 :** cell lysate from non transfected 293T cells

Lysates/proteins at 25  $\mu$ g per lane.

Developed using the ECL technique.

**Predicted band size:** 42 kDa

**Observed band size:** ~37 kDa

**Please note:** All products are "FOR RESEARCH USE ONLY AND ARE NOT INTENDED FOR DIAGNOSTIC OR THERAPEUTIC USE"

## Our Abpromise to you: Quality guaranteed and expert technical support

- Replacement or refund for products not performing as stated on the datasheet
- Valid for 12 months from date of delivery
- Response to your inquiry within 24 hours
- We provide support in Chinese, English, French, German, Japanese and Spanish
- Extensive multi-media technical resources to help you
- We investigate all quality concerns to ensure our products perform to the highest standards

If the product does not perform as described on this datasheet, we will offer a refund or replacement. For full details of the Abpromise,

please visit <http://www.abcam.co.jp/abpromise> or contact our technical team.

## **Terms and conditions**

---

- Guarantee only valid for products bought direct from Abcam or one of our authorized distributors