

## Product datasheet

# Anti-Milk Fat Globule 1 antibody ab89232

★ ★ ☆ ☆ ☆ 1 Abreviews [画像数 2](#)

### 製品の概要

製品名	Anti-Milk Fat Globule 1 antibody
製品の詳細	Mouse polyclonal to Milk Fat Globule 1
由来種	Mouse
アプリケーション	適用あり: WB
種交差性	交差種: Human
免疫原	Recombinant full length protein corresponding to Human Milk Fat Globule 1.
ポジティブ・コントロール	Human pancreas

### 製品の特性

製品の状態	Liquid
保存方法	Shipped at 4°C. Upon delivery aliquot and store at -20°C. Avoid freeze / thaw cycles.
バッファー	Preservative: None Constituents: 1X PBS, pH 7.2
精製度	Protein A purified
ポリ/モノ	ポリクローナル
アイソタイプ	IgG

### アプリケーション

Our [Abpromise guarantee](#) covers the use of **ab89232** in the following tested applications.

The application notes include recommended starting dilutions; optimal dilutions/concentrations should be determined by the end user.

アプリケーション	Abreviews	特記事項
WB	★ ★ ☆ ☆ ☆	Use a concentration of 1 µg/ml. Predicted molecular weight: 43 kDa.

### ターゲット情報

**機能** Plays an important role in the maintenance of intestinal epithelial homeostasis and the promotion

of mucosal healing. Promotes VEGF-dependent neovascularization (By similarity). Contributes to phagocytic removal of apoptotic cells in many tissues. Specific ligand for the alpha-v/beta-3 and alpha-v/beta-5 receptors. Also binds to phosphatidylserine-enriched cell surfaces in a receptor-independent manner. Zona pellucida-binding protein which may play a role in gamete interaction. Binds specifically to rotavirus and inhibits its replication.

Medin is the main constituent of aortic medial amyloid.

**組織特異性**

Mammary epithelial cell surfaces and aortic media. Overexpressed in several carcinomas.

**配列類似性**

Contains 1 EGF-like domain.

Contains 2 F5/8 type C domains.

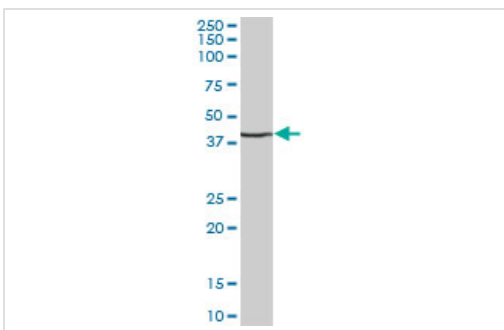
**翻訳後修飾**

Medin has a ragged N-terminus with minor species starting at Pro-264 and Gly-273.

**細胞内局在**

Membrane. Secreted.

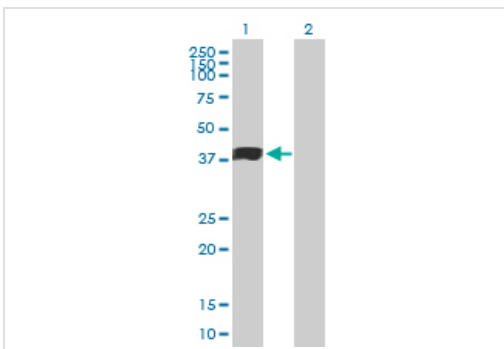
**画像**



Anti-Milk Fat Globule 1 antibody (ab89232) at 1 µg/ml + Human pancreas cell lysate at 25 µg

**Predicted band size:** 43 kDa

Western blot - Human Milk Fat Globule 1 antibody (ab89232)



Anti-Milk Fat Globule 1 antibody (ab89232) at 1 µg/ml + Transfected 293T Cell Line at 25 µg

**Predicted band size:** 43 kDa

**Observed band size:** 42.57 kDa

Western blot - Human Milk Fat Globule 1 antibody (ab89232)

**Please note:** All products are "FOR RESEARCH USE ONLY AND ARE NOT INTENDED FOR DIAGNOSTIC OR THERAPEUTIC USE"

**Our Abpromise to you: Quality guaranteed and expert technical support**

- Replacement or refund for products not performing as stated on the datasheet
- Valid for 12 months from date of delivery

- Response to your inquiry within 24 hours
- We provide support in Chinese, English, French, German, Japanese and Spanish
- Extensive multi-media technical resources to help you
- We investigate all quality concerns to ensure our products perform to the highest standards

If the product does not perform as described on this datasheet, we will offer a refund or replacement. For full details of the Abpromise, please visit <http://www.abcam.co.jp/abpromise> or contact our technical team.

### **Terms and conditions**

---

- Guarantee only valid for products bought direct from Abcam or one of our authorized distributors