

Product datasheet

Anti-MRPL38 antibody ab88867

画像数 3

製品の概要

製品名	Anti-MRPL38 antibody
製品の詳細	Mouse polyclonal to MRPL38
由来種	Mouse
アプリケーション	適用あり: WB
種交差性	交差種: Human
免疫原	Full length human MRPL38 protein (NP_115867.1).
ポジティブ・コントロール	Human placenta tissue and A431 lysates, MRPL38 transfected 293T cell lysate.

製品の特性

製品の状態	Liquid
保存方法	Shipped at 4°C. Upon delivery aliquot and store at -20°C or -80°C. Avoid repeated freeze / thaw cycles.
バッファー	Preservative: None Constituents: 1X PBS, pH 7.2
精製度	Protein A purified
ポリ/モノ	ポリクローナル
アイソタイプ	IgG

アプリケーション

Our [Abpromise guarantee](#) covers the use of **ab88867** in the following tested applications.

The application notes include recommended starting dilutions; optimal dilutions/concentrations should be determined by the end user.

アプリケーション	Abreviews	特記事項
WB		Use a concentration of 1 µg/ml. Predicted molecular weight: 38 kDa.

ターゲット情報

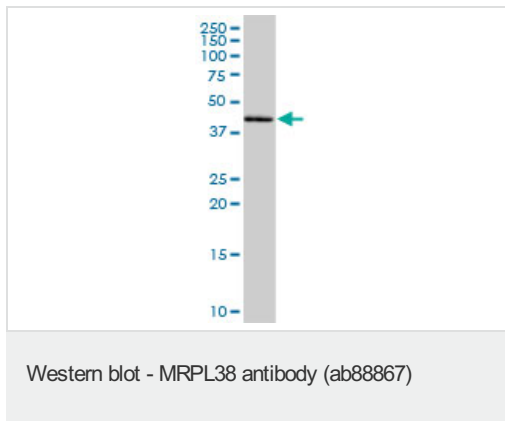
関連性

Mammalian mitochondrial ribosomal proteins are encoded by nuclear genes and help in protein synthesis within the mitochondrion. Mitochondrial ribosomes (mitoribosomes) consist of a small 28S subunit and a large 39S subunit. They have an estimated 75% protein to rRNA composition compared to prokaryotic ribosomes, where this ratio is reversed. Another difference between mammalian mitoribosomes and prokaryotic ribosomes is that the latter contain a 5S rRNA. Among different species, the proteins comprising the mitoribosome differ greatly in sequence, and sometimes in biochemical properties, which prevents easy recognition by sequence homology. MRPL38 is a 39S subunit protein.

細胞内局在

Mitochondrial

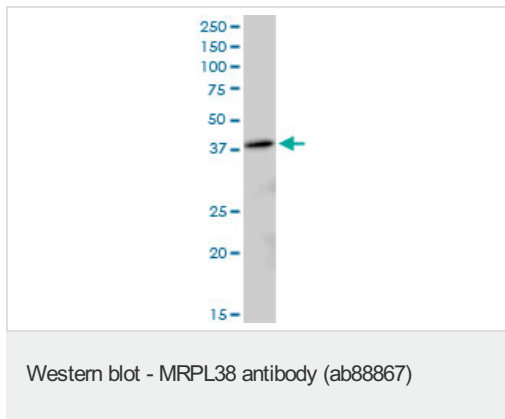
画像



Anti-MRPL38 antibody (ab88867) at 1 μ g/ml +
human placenta tissue lysate at 50 μ g

Predicted band size: 38 kDa

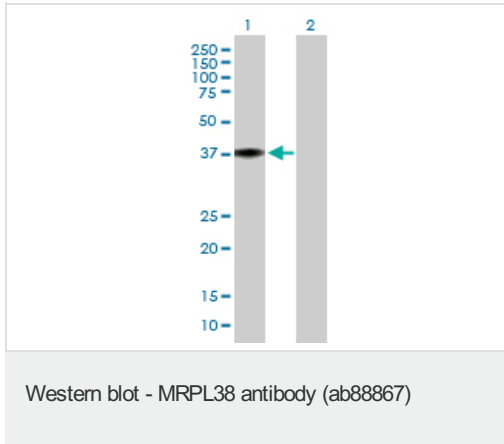
Observed band size: 41 kDa



Anti-MRPL38 antibody (ab88867) at 1 μ g/ml +
A431 cell lysate at 50 μ g

Predicted band size: 38 kDa

Observed band size: 38 kDa



All lanes : Anti-MRPL38 antibody (ab88867)

at 1 µg/ml

Lane 1 : MRPL38 transfected 293T cell lysate

Lane 2 : Non transfected lysate

Lysates/proteins at 25 µg per lane.

Predicted band size: 38 kDa

Observed band size: 38 kDa

Please note: All products are "FOR RESEARCH USE ONLY AND ARE NOT INTENDED FOR DIAGNOSTIC OR THERAPEUTIC USE"

Our Abpromise to you: Quality guaranteed and expert technical support

- Replacement or refund for products not performing as stated on the datasheet
- Valid for 12 months from date of delivery
- Response to your inquiry within 24 hours
- We provide support in Chinese, English, French, German, Japanese and Spanish
- Extensive multi-media technical resources to help you
- We investigate all quality concerns to ensure our products perform to the highest standards

If the product does not perform as described on this datasheet, we will offer a refund or replacement. For full details of the Abpromise, please visit <http://www.abcam.co.jp/abpromise> or contact our technical team.

Terms and conditions

- Guarantee only valid for products bought direct from Abcam or one of our authorized distributors