

Product datasheet

Anti-AMY1B antibody ab88646

画像数 2

製品の概要

製品名	Anti-AMY1B antibody
製品の詳細	Mouse polyclonal to AMY1B
由来種	Mouse
アプリケーション	適用あり: WB
種交差性	交差種: Human
免疫原	Full length Human AMY1B protein (NP_001008219.1).
ポジティブ・コントロール	Human pancreas tissue lysate. Cell lysate from transfected 293T cells.

製品の特性

製品の状態	Liquid
保存方法	Shipped at 4°C. Upon delivery aliquot and store at -20°C or -80°C. Avoid repeated freeze / thaw cycles.
バッファー	Preservative: None Constituents: PBS, pH 7.2
精製度	Protein A purified
ポリ/モノ	ポリクローナル
アイソタイプ	IgG

アプリケーション

Our [Abpromise guarantee](#) covers the use of **ab88646** in the following tested applications.

The application notes include recommended starting dilutions; optimal dilutions/concentrations should be determined by the end user.

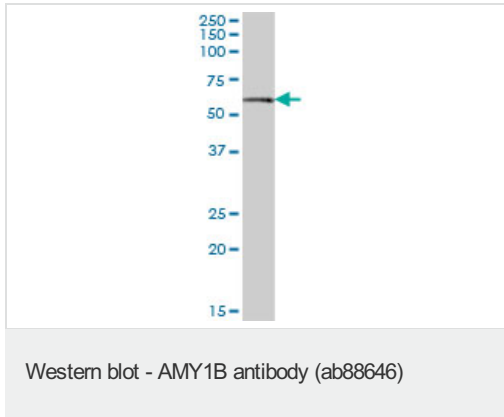
アプリケーション	Abreviews	特記事項
WB		Use a concentration of 1 µg/ml. Detects a band of approximately 58 kDa (predicted molecular weight: 58 kDa).

ターゲット情報

関連性 Amylases are secreted proteins that hydrolyze 1,4-alpha-glucoside bonds in oligosaccharides and polysaccharides and thus catalyze the first step in digestion of dietary starch and glycogen. The human genome has a cluster of several amylase genes that are expressed at high levels in either salivary gland or pancreas. This gene encodes an amylase isoenzyme produced by the salivary gland.

細胞内局在 Secreted

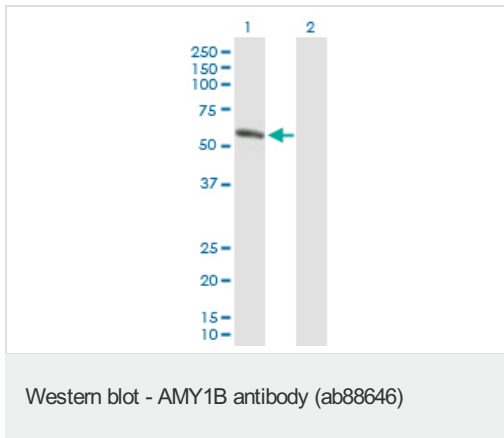
画像



Anti-AMY1B antibody (ab88646) at 1 µg/ml +
Human pancreas tissue lysate at 50 µg

Predicted band size: 58 kDa

Observed band size: 58 kDa



All lanes : Anti-AMY1B antibody (ab88646) at
1 µg/ml

Lane 1 : cell lysate from AMY1B transfected
293T cells

Lane 2 : cell lysate from non transfected 293T
cells

Lysates/proteins at 25 µg per lane.

Predicted band size: 58 kDa

Observed band size: 58 kDa

Please note: All products are "FOR RESEARCH USE ONLY AND ARE NOT INTENDED FOR DIAGNOSTIC OR THERAPEUTIC USE"

Our Promise to you: Quality guaranteed and expert technical support

- Replacement or refund for products not performing as stated on the datasheet
- Valid for 12 months from date of delivery
- Response to your inquiry within 24 hours
- We provide support in Chinese, English, French, German, Japanese and Spanish

- Extensive multi-media technical resources to help you
- We investigate all quality concerns to ensure our products perform to the highest standards

If the product does not perform as described on this datasheet, we will offer a refund or replacement. For full details of the Abpromise, please visit <http://www.abcam.co.jp/abpromise> or contact our technical team.

Terms and conditions

- Guarantee only valid for products bought direct from Abcam or one of our authorized distributors