

Product datasheet

Anti-NUBP1 antibody ab88622

画像数 3

製品の概要

製品名	Anti-NUBP1 antibody
製品の詳細	Mouse polyclonal to NUBP1
アプリケーション	適用あり: WB, ICC/IF
種交差性	交差種: Human
免疫原	Full length protein, corresponding to amino acids 1-320 of Human NUBP1 (NP_002475.2)
ポジティブ・コントロール	COLO 320 HSR HeLa cell

製品の特性

製品の状態	Liquid
保存方法	Shipped at 4°C. Upon delivery aliquot and store at -20°C or -80°C. Avoid repeated freeze / thaw cycles.
バッファー	Preservative: None Constituents: 1X PBS, pH 7.2
精製度	Protein A purified
ポリ/モノ	ポリクローナル
アイソタイプ	IgG

アプリケーション

Our [Abpromise guarantee](#) covers the use of **ab88622** in the following tested applications.

The application notes include recommended starting dilutions; optimal dilutions/concentrations should be determined by the end user.

アプリケーション	Abreviews	特記事項
WB		Use a concentration of 1 µg/ml. Predicted molecular weight: 35 kDa.
ICC/IF		Use a concentration of 10 µg/ml.

ターゲット情報

機能

Implicated in the regulation of centrosome duplication (By similarity). Component of the cytosolic iron-sulfur (Fe/S) protein assembly machinery. Required for maturation of extramitochondrial Fe/S proteins. May bind and transfer 2 labile 4Fe-4S clusters to target apoproteins.

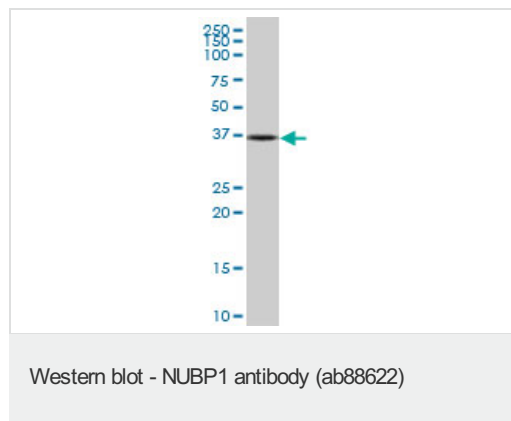
配列類似性

Belongs to the Mrp/NBP35 ATP-binding proteins family. NUBP1/NBP35 subfamily.

細胞内局在

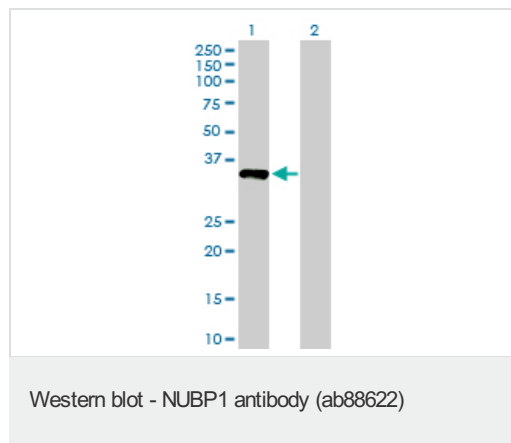
Cytoplasm.

画像



Anti-NUBP1 antibody (ab88622) at 1 $\mu\text{g/ml}$ +
COLO 320 HSR at 50 μg

Predicted band size : 35 kDa

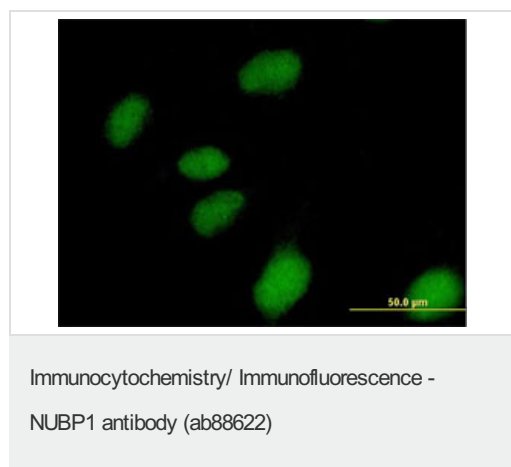


All lanes : Anti-NUBP1 antibody (ab88622) at
1 $\mu\text{g/ml}$

Lane 1 : Transfected 293T cell line lysate at
25 μg

Lane 2 : Non-transfected 293T cell line lysate
at 25 $\mu\text{g/ml}$

Predicted band size : 35 kDa



ab88622 at 10 $\mu\text{g/ml}$ staining NUBP1 in HeLa
cell by Immunofluorescence.

Please note: All products are "FOR RESEARCH USE ONLY AND ARE NOT INTENDED FOR DIAGNOSTIC OR THERAPEUTIC USE"

Our Abpromise to you: Quality guaranteed and expert technical support

- Replacement or refund for products not performing as stated on the datasheet
- Valid for 12 months from date of delivery
- Response to your inquiry within 24 hours

- We provide support in Chinese, English, French, German, Japanese and Spanish
- Extensive multi-media technical resources to help you
- We investigate all quality concerns to ensure our products perform to the highest standards

If the product does not perform as described on this datasheet, we will offer a refund or replacement. For full details of the Abpromise, please visit <http://www.abcam.co.jp/abpromise> or contact our technical team.

Terms and conditions

- Guarantee only valid for products bought direct from Abcam or one of our authorized distributors