

Product datasheet

Anti-CBF1 interacting corepressor antibody ab88490

画像数 2

製品の概要

| | |
|---------------------|---|
| 製品名 | Anti-CBF1 interacting corepressor antibody |
| 製品の詳細 | Mouse monoclonal to CBF1 interacting corepressor |
| 由来種 | Mouse |
| アプリケーション | 適用あり: WB, ELISA |
| 種交差性 | 交差種: Human 交差が予測される動物種: Mouse, Rat, Chicken  |
| 免疫原 | Recombinant fragment: HVNTDRECPL FGLSGINASS VPTDGSGPSM HPSELIAEMR NSGFALKRNV LGRNLTANDP SQEYVASEG, corresponding to amino acids 136-205 of Human CBF1 interacting corepressor (NP_004873) with a 26kDa tag Run BLAST with ExPASy Run BLAST with NCBI |
| ポジティブ・コントロール | <div style="border: 1px solid #ccc; padding: 5px; background-color: #f9f9f9;"> <p>ウエスタン・プロット用ポジティブコントロール Recombinant Human CBF1 interacting corepressor protein ▶</p> </div> <p>HeLa cell lysate</p> |

製品の特性

| | |
|---------------|---|
| 製品の状態 | Liquid |
| 保存方法 | Shipped at 4°C. Upon delivery aliquot and store at -20°C or -80°C. Avoid repeated freeze / thaw cycles. |
| バッファー | Preservative: None Constituents: 1X PBS, pH 7.2 |
| 精製度 | Protein A purified |
| ポリモノ | モノクローナル |
| アイソタイプ | IgG1 |
| 軽鎖の種類 | kappa |

アプリケーション

Our [Abpromise guarantee](#) covers the use of **ab88490** in the following tested applications.

The application notes include recommended starting dilutions; optimal dilutions/concentrations should be determined by the end user.

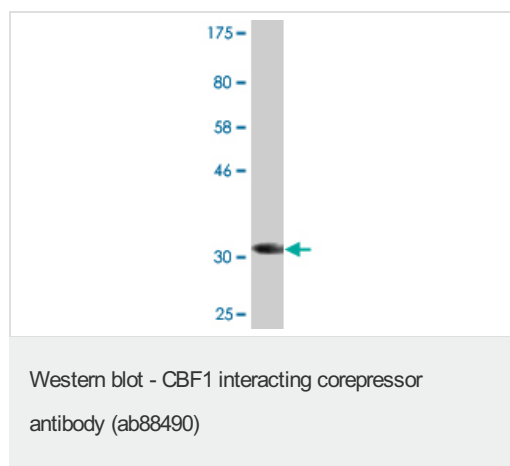
| アプリケーション | Abreviews | 特記事項 |
|----------|-----------|---|
| WB | | Use a concentration of 1 - 5 µg/ml. Predicted molecular weight: 52 kDa. |
| ELISA | | Use at an assay dependent dilution. |

ターゲット情報

関連性 CBF1 interacting corepressor may modulate splice site selection during alternative splicing of pre-mRNAs. It regulates transcription and acts as corepressor for RBPSUH; recruits RBPSUH to the Sin3-histone deacetylase complex (HDAC).

細胞内局在 Nuclear

画像



Anti-CBF1 interacting corepressor antibody (ab88490) at 5 µg/ml + recombinant protein (immunogen) at 0.2 µg

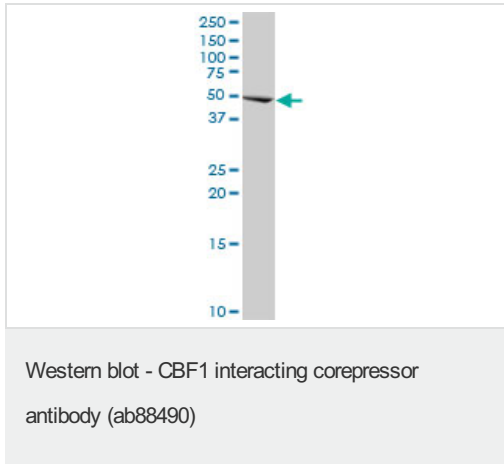
Secondary

Goat anti-mouse IgG (H&L)-HRP conjugate at 1/5000 dilution

Predicted band size: 52 kDa

Observed band size: 34 kDa

The observed band size may not correspond to the predicted protein molecular weight as the immunogen (recombinant fragment) was used for the test lane.



Anti-CBF1 interacting corepressor antibody
(ab88490) at 5 µg/ml + HeLa cell lysate at 50
µg

Predicted band size: 52 kDa

Please note: All products are "FOR RESEARCH USE ONLY AND ARE NOT INTENDED FOR DIAGNOSTIC OR THERAPEUTIC USE"

Our Abpromise to you: Quality guaranteed and expert technical support

- Replacement or refund for products not performing as stated on the datasheet
- Valid for 12 months from date of delivery
- Response to your inquiry within 24 hours
- We provide support in Chinese, English, French, German, Japanese and Spanish
- Extensive multi-media technical resources to help you
- We investigate all quality concerns to ensure our products perform to the highest standards

If the product does not perform as described on this datasheet, we will offer a refund or replacement. For full details of the Abpromise, please visit <http://www.abcam.co.jp/abpromise> or contact our technical team.

Terms and conditions

- Guarantee only valid for products bought direct from Abcam or one of our authorized distributors