

Product datasheet

Anti-DCAMKL1 antibody ab88484

1 Abreviews 1 References 画像数 5

製品の概要

製品名	Anti-DCAMKL1 antibody
製品の詳細	Mouse monoclonal to DCAMKL1
由来種	Mouse
アプリケーション	適用あり: WB, ELISA, ICC/IF, IHC-P
種交差性	交差種: Mouse, Recombinant fragment 交差が予測される動物種: Rat, Human, Chimpanzee, Rhesus monkey
免疫原	Recombinant fragment: QVLEHPWVND DGLPENEHQL SVAGKIKKHF NTGPKPNSTA AGVSVIALDH GFTIKRSGSL DYYQQPGMYW IRPPLLIRRG RFSDEDATRM, corresponding to amino acids 640-729 of Human DCAMKL1 (NP_004725) with a proprietary tag. Run BLAST with ExPASy Run BLAST with NCBI
ポジティブ・コントロール	Partial tagged recombinant DCAMKL1 protein. NIH/3T3 cell lysate. NIH/3T3 cells.

製品の特性

製品の状態	Liquid
保存方法	Shipped at 4°C. Upon delivery aliquot and store at -20°C or -80°C. Avoid repeated freeze / thaw cycles.
バッファー	Preservative: None Constituents: 1X PBS, pH 7.2
精製度	Protein A purified
ポリ/モノ	モノクローナル
アイソタイプ	IgG1
軽鎖の種類	kappa

アプリケーション

Our [Abpromise guarantee](#) covers the use of **ab88484** in the following tested applications.

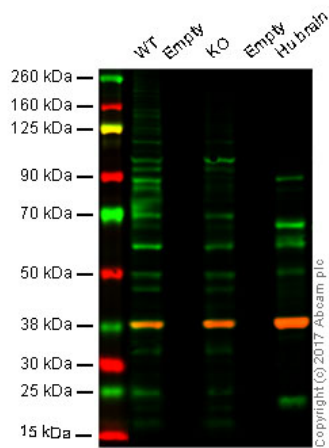
The application notes include recommended starting dilutions; optimal dilutions/concentrations should be determined by the end user.

アプリケーション	Abreviews	特記事項
WB		Use a concentration of 1 - 5 µg/ml. Predicted molecular weight: 82 kDa.
ELISA		Use at an assay dependent concentration.
ICC/IF		Use a concentration of 10 µg/ml.
IHC-P		Use a concentration of 1 µg/ml.

ターゲット情報

機能	Probable kinase that may be involved in a calcium-signaling pathway controlling neuronal migration in the developing brain. May also participate in functions of the mature nervous system.
組織特異性	In fetal tissues, highly expressed in brain, detectable in lung and liver, but not in kidney. In adult tissues, expressed ubiquitously in the brain, detectable in the heart, liver, spleen, thymus, prostate, testis, ovary, small intestine and colon. The type A isoforms seem to be expressed predominantly in fetal brain whereas type B isoforms are expressed abundantly in both fetal and adult brain.
配列類似性	Belongs to the protein kinase superfamily. CAMK Ser/Thr protein kinase family. CaMK subfamily. Contains 2 doublecortin domains. Contains 1 protein kinase domain.

画像



Western blot - Anti-DCAMKL1 antibody (ab88484)

Lanes:

Lane 1: Wild type HAP1 whole cell lysate (20 µg)

Lane 2: Empty

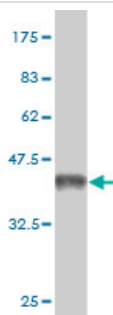
Lane 3: DCAMKL1 knockout HAP1 whole cell lysate (20 µg)

Lane 4: Empty

Lane 5: Human brain whole cell lysate (20 µg)

Lanes 1 - 5: Merged signal (red and green). Green - ab88484 observed at 90 kDa. Red - loading control, [ab181602](#), observed at 37 kDa.

ab88484 was shown not to specifically react with DCAMKL1 when DCAMKL1 knockout samples were used. Wild-type and DCAMKL1 knockout samples were subjected to SDS-PAGE. ab88484 and [ab181602](#) (Rabbit anti GAPDH loading control) were incubated overnight at 4°C at 1 µg/ml and 1/10000 dilution respectively. Blots were developed with Goat anti-Mouse IgG H&L (IRDye® 800CW) preabsorbed [ab216772](#) and Goat anti-Rabbit IgG H&L (IRDye® 680RD) preabsorbed [ab216777](#) secondary antibodies at 1/10000 dilution for 1 hour at room temperature before imaging.



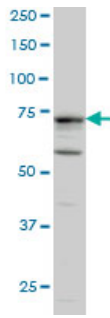
Western blot - Anti-DCAMKL1 antibody (ab88484)

Anti-DCAMKL1 antibody (ab88484) at 5 µg/ml + Partial tagged recombinant DCAMKL1 protein (immunogen) at 0.1 µg

Predicted band size: 82 kDa

Observed band size: 42 kDa

Western blot against tagged recombinant protein immunogen. Predicted band size of immunogen is 36 kDa.



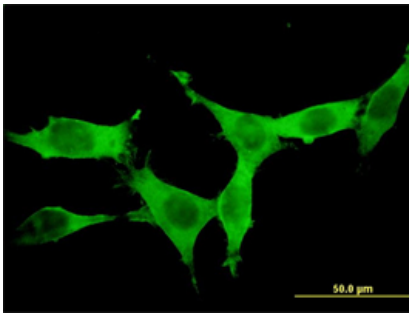
Western blot - Anti-DCAMKL1 antibody (ab88484)

Anti-DCAMKL1 antibody (ab88484) at 5 $\mu\text{g/ml}$ + NIH/3T3 cell lysate at 50 μg

Predicted band size: 82 kDa

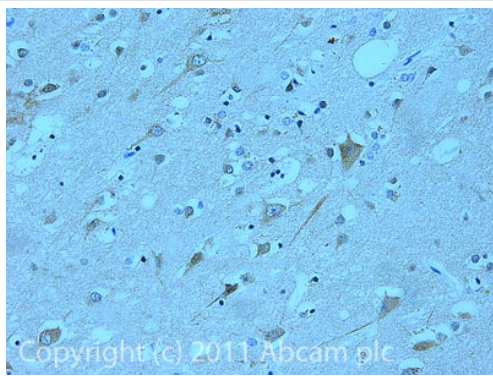
Observed band size: 73 kDa

Additional bands at: 60 kDa. We are unsure as to the identity of these extra bands.



Immunocytochemistry/ Immunofluorescence - Anti-DCAMKL1 antibody (ab88484)

ab88484, at 10 $\mu\text{g/ml}$, staining DCAMKL1 in NIH/3T3 cells by Immunofluorescence.



Immunohistochemistry (Formalin/PFA-fixed paraffin-embedded sections) - Anti-DCAMKL1 antibody (ab88484)

IHC image of ab88484 staining in Human Hippocampus formalin fixed paraffin embedded tissue section, performed on a Leica BondTM system using the standard protocol F. The section was pre-treated using heat mediated antigen retrieval with sodium citrate buffer (pH6, epitope retrieval solution 1) for 20 mins. The section was then incubated with ab88484, 1 $\mu\text{g/ml}$, for 15 mins at room temperature and detected using an HRP conjugated compact polymer system. DAB was used as the chromogen. The section was then counterstained with haematoxylin and mounted with DPX.

For other IHC staining systems (automated and non-automated) customers should optimize variable parameters such as antigen retrieval conditions, primary antibody concentration and antibody incubation times.

Our Abpromise to you: Quality guaranteed and expert technical support

- Replacement or refund for products not performing as stated on the datasheet
- Valid for 12 months from date of delivery
- Response to your inquiry within 24 hours

- We provide support in Chinese, English, French, German, Japanese and Spanish
- Extensive multi-media technical resources to help you
- We investigate all quality concerns to ensure our products perform to the highest standards

If the product does not perform as described on this datasheet, we will offer a refund or replacement. For full details of the Abpromise, please visit <http://www.abcam.co.jp/abpromise> or contact our technical team.

Terms and conditions

- Guarantee only valid for products bought direct from Abcam or one of our authorized distributors