


Product datasheet

Anti-BLAP75 antibody ab87223

画像数 1

製品の概要

製品名	Anti-BLAP75 antibody
製品の詳細	Rabbit polyclonal to BLAP75
由来種	Rabbit
アプリケーション	適用あり: WB
種交差性	交差種: Human 交差が予測される動物種: Mouse, Rat, Rabbit, Horse, Guinea pig, Cow, Cat, Dog 
免疫原	Synthetic peptide corresponding to a region within the N terminal amino acids 72-121 (GILEIPKGEL NGFYALQINS LVDVSQLPAYS QIQKLRGKNT TNDLVTAFAQ) of Human BLAP75 (NP_079221). Run BLAST with ExPASy Run BLAST with NCBI
ポジティブ・コントロール	Transfected 293T cell lysate.

製品の特性

製品の状態	Liquid
保存方法	Shipped at 4°C. Upon delivery aliquot and store at -20°C. Avoid freeze / thaw cycles.
バッファー	Preservative: None Constituents: 2% Sucrose, PBS
精製度	Immunogen affinity purified
ポリ/モノ	ポリクローナル
アイソタイプ	IgG

アプリケーション

Our [Abpromise guarantee](#) covers the use of **ab87223** in the following tested applications.

The application notes include recommended starting dilutions; optimal dilutions/concentrations should be determined by the end user.

アプリケーション	Abreviews	特記事項
----------	-----------	------

WB Use a concentration of 1 µg/ml. Detects a band of approximately 80 kDa (predicted molecular weight: 70 kDa). Good results were obtained when blocked with 5% non-fat dry milk in 0.05% PBS-T.

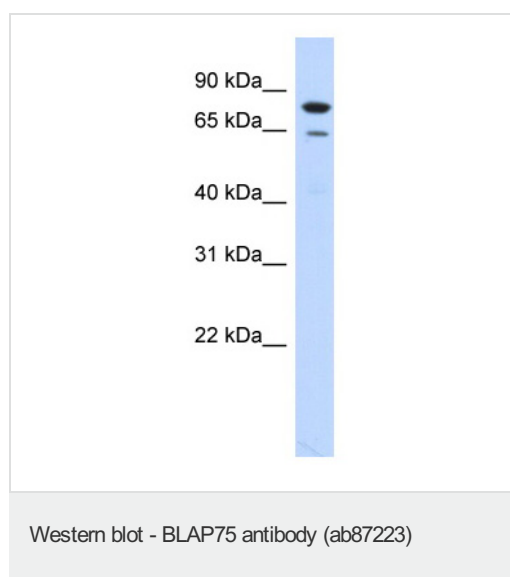
ターゲット情報

機能 Essential component of the RMI complex, a complex that plays an important role in the processing of homologous recombination intermediates to limit DNA crossover formation in cells. Promotes TOP3A binding to double Holliday junctions (DHJ) and hence stimulates TOP3A-mediated dissolution. Required for BLM phosphorylation during mitosis. Within the BLM complex, required for BLM and TOP3A stability.

配列類似性 Belongs to the RMI1 family.

細胞内局在 Nucleus. Forms foci in response to DNA damage.

画像



Anti-BLAP75 antibody (ab87223) at 1 µg/ml
(5% skim milk / PBS buffer) + Transfected
293T cell lysate at 10 µg

Secondary

HRP conjugated anti-Rabbit IgG at 1/50000
dilution

Predicted band size: 70 kDa

Observed band size: 65 kDa

Additional bands at: 80 kDa. We are unsure
as to the identity of these extra bands.

Gel concentration 12%

Please note: All products are "FOR RESEARCH USE ONLY AND ARE NOT INTENDED FOR DIAGNOSTIC OR THERAPEUTIC USE"

Our Promise to you: Quality guaranteed and expert technical support

- Replacement or refund for products not performing as stated on the datasheet
- Valid for 12 months from date of delivery
- Response to your inquiry within 24 hours

- We provide support in Chinese, English, French, German, Japanese and Spanish
- Extensive multi-media technical resources to help you
- We investigate all quality concerns to ensure our products perform to the highest standards

If the product does not perform as described on this datasheet, we will offer a refund or replacement. For full details of the Abpromise, please visit <http://www.abcam.co.jp/abpromise> or contact our technical team.

Terms and conditions

- Guarantee only valid for products bought direct from Abcam or one of our authorized distributors