

Product datasheet

Anti-S100 antibody [15E2E2] ab86728

画像数 1

製品の概要

製品名	Anti-S100 antibody [15E2E2]
製品の詳細	Mouse monoclonal [15E2E2] to S100
由来種	Mouse
アプリケーション	適用あり: IHC-P, Flow Cyt
種交差性	交差種: Human
免疫原	S100 Protein A and B subunits
ポジティブ・コントロール	Human Melanoma or Schwannoma lymphoblastic leukemia tissue. ab86728 stains melanocytes, schwannomas, peripheral neural tissue and astrocytes, and benign and malignant melanomas and their metastases.

製品の特性

製品の状態	Liquid
保存方法	Shipped at 4°C. Store at +4°C short term (1-2 weeks). Store at -20°C or -80°C. Avoid freeze / thaw cycle.
バッファー	Preservative: 0.09% Sodium Azide Constituents: 1% BSA, PBS, pH 7.2-7.4
ポリ/モノ	モノクローナル
クローン名	15E2E2
アイソタイプ	IgG2a

アプリケーション

Our [Abpromise guarantee](#) covers the use of **ab86728** in the following tested applications.

The application notes include recommended starting dilutions; optimal dilutions/concentrations should be determined by the end user.

アプリケーション	Abreviews	特記事項
IHC-P		1/50 - 1/100.

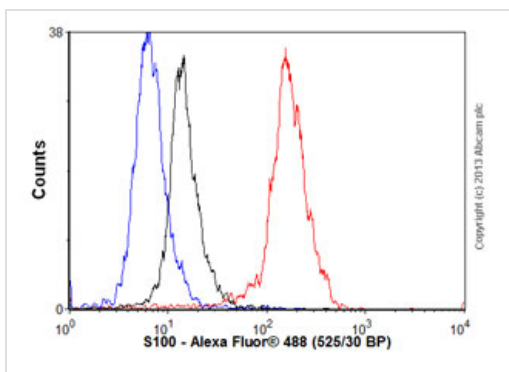
アプリケーション	Abreviews	特記事項
----------	-----------	------

Flow Cyt	1/1000.	ab170191 - Mouse monoclonal IgG2a, is suitable for use as an isotype control with this antibody.
----------	---------	--

ターゲット情報

機能	Weakly binds calcium but binds zinc very tightly-distinct binding sites with different affinities exist for both ions on each monomer. Physiological concentrations of potassium ion antagonize the binding of both divalent cations, especially affecting high-affinity calcium-binding sites.
組織特異性	Highly prevalent in heart. Also found in lesser quantities in skeletal muscle and brain.
配列類似性	Belongs to the S-100 family. Contains 2 EF-hand domains.
細胞内局在	Cytoplasm.

画像



Flow Cytometry - Anti-S100 antibody [15E2E2] (ab86728)

Overlay histogram showing SHSY-5Y cells stained with ab86728 (red line). The cells were fixed with 80% methanol (5 min) and then permeabilized with 0.1% PBS-Tween for 20 min. The cells were then incubated in 1x PBS / 10% normal goat serum / 0.3M glycine to block non-specific protein-protein interactions followed by the antibody (ab86728, 1/1000 dilution) for 30 min at 22°C. The secondary antibody used was Alexa Fluor® 488 goat anti-rabbit IgG (H&L) ([ab150077](#)) at 1/2000 dilution for 30 min at 22°C. Isotype control antibody (black line) was rabbit IgG (monoclonal) (0.1µg/1x10⁶ cells) used under the same conditions. Unlabelled sample (blue line) was also used as a control. Acquisition of >5,000 events were collected using a 20mW Argon ion laser (488nm) and 525/30 bandpass filter.

Please note: All products are "FOR RESEARCH USE ONLY AND ARE NOT INTENDED FOR DIAGNOSTIC OR THERAPEUTIC USE"

Our Abpromise to you: Quality guaranteed and expert technical support

- Replacement or refund for products not performing as stated on the datasheet
- Valid for 12 months from date of delivery
- Response to your inquiry within 24 hours

- We provide support in Chinese, English, French, German, Japanese and Spanish
- Extensive multi-media technical resources to help you
- We investigate all quality concerns to ensure our products perform to the highest standards

If the product does not perform as described on this datasheet, we will offer a refund or replacement. For full details of the Abpromise, please visit <http://www.abcam.co.jp/abpromise> or contact our technical team.

Terms and conditions

- Guarantee only valid for products bought direct from Abcam or one of our authorized distributors