


Product datasheet

Anti-CPN1 antibody ab86556

1 References [画像数 2](#)

製品の概要

製品名	Anti-CPN1 antibody
製品の詳細	Rabbit polyclonal to CPN1
由来種	Rabbit
アプリケーション	適用あり: IHC-P, WB
種交差性	交差種: Human 交差が予測される動物種: Mouse, Rat, Rabbit, Horse, Chicken, Guinea pig, Cow, Cat, Dog, Zebrafish 
免疫原	Synthetic peptide corresponding to a region within the internal amino acids 252-301 (QKLAKVYSYAHGWMFQGWNCGDYFPDGITNGASWYLSKGMQDFNYLHT N) of Human CPN1 (NP_001299).
ポジティブ・コントロール	Transfected 293T cell lysate.

製品の特性

製品の状態	Liquid
保存方法	Shipped at 4°C. Upon delivery aliquot and store at -20°C or -80°C. Avoid repeated freeze / thaw cycles.
バッファー	Preservative: None Constituents: 2% Sucrose, PBS
精製度	Immunogen affinity purified
ポリ/モノ	ポリクローナル
アイソタイプ	IgG

アプリケーション

Our [Abpromise guarantee](#) covers the use of **ab86556** in the following tested applications.

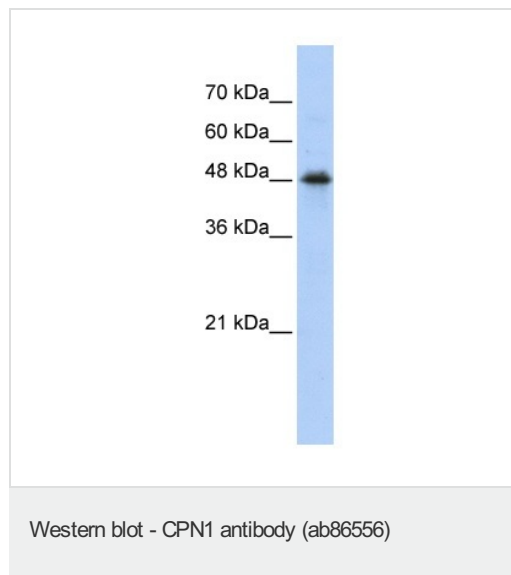
The application notes include recommended starting dilutions; optimal dilutions/concentrations should be determined by the end user.

アプリケーション	Abreviews	特記事項
IHC-P		Use a concentration of 2.5 µg/ml.
WB		Use a concentration of 1 µg/ml. Predicted molecular weight: 52 kDa. Good results were obtained when blocked with 5% non-fat dry milk in 0.05% PBS-T.

ターゲット情報

機能	Protects the body from potent vasoactive and inflammatory peptides containing C-terminal Arg or Lys (such as kinins or anaphylatoxins) which are released into the circulation.
組織特異性	Synthesized in the liver and secreted in plasma.
関連疾患	Defects in CPN1 are the cause of carboxypeptidase N deficiency (CPND) [MIM:212070]. Patients affected present some combination of angioedema or chronic urticaria, as well as hay fever or asthma, and have also slightly depressed serum carboxy peptidase N, suggestive of autosomal recessive inheritance of this disorder.
配列類似性	Belongs to the peptidase M14 family.
細胞内局在	Secreted > extracellular space.

画像



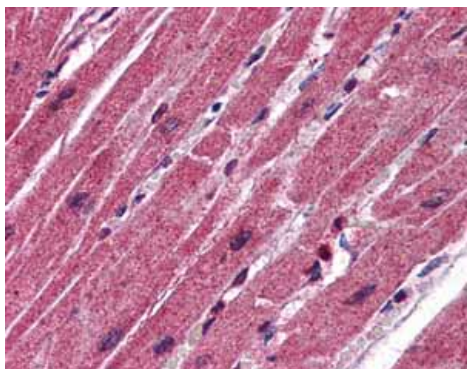
Anti-CPN1 antibody (ab86556) at 1 µg/ml (in 5% skim milk / PBS buffer) + transfected 293T cell lysate at 10 µg

Secondary

HRP conjugated anti-Rabbit IgG at 1/50000 dilution

Predicted band size: 52 kDa

12% gel



Immunohistochemistry (Formalin/PFA-fixed paraffin-embedded sections) analysis of human heart tissue labelling CPN1 with ab86556 at 2.5µg/ml.

Immunohistochemistry (Formalin/PFA-fixed paraffin-embedded sections)-Anti-CPN1 antibody(ab86556)

Please note: All products are "FOR RESEARCH USE ONLY AND ARE NOT INTENDED FOR DIAGNOSTIC OR THERAPEUTIC USE"

Our Abpromise to you: Quality guaranteed and expert technical support

- Replacement or refund for products not performing as stated on the datasheet
- Valid for 12 months from date of delivery
- Response to your inquiry within 24 hours
- We provide support in Chinese, English, French, German, Japanese and Spanish
- Extensive multi-media technical resources to help you
- We investigate all quality concerns to ensure our products perform to the highest standards

If the product does not perform as described on this datasheet, we will offer a refund or replacement. For full details of the Abpromise, please visit <http://www.abcam.co.jp/abpromise> or contact our technical team.

Terms and conditions

- Guarantee only valid for products bought direct from Abcam or one of our authorized distributors