

Product datasheet

Anti-PEDF antibody ab85232

画像数 1

製品の概要

製品名	Anti-PEDF antibody
製品の詳細	Rabbit polyclonal to PEDF
由来種	Rabbit
アプリケーション	適用あり: WB, ELISA
種交差性	交差種: Human
免疫原	Synthetic peptide selected from the center region of Human PEDF, conjugated to KLH (NP_002606).
ポジティブ・コントロール	K562 cell line lysate.

製品の特性

製品の状態	Liquid
保存方法	Shipped at 4°C. Upon delivery aliquot and store at -20°C. Avoid repeated freeze / thaw cycles.
バッファー	Preservative: 0.09% Sodium Azide Constituents: PBS
精製度	Ammonium Sulphate Precipitation
特記事項 (精製)	ab85232 is prepared by Saturated Ammonium Sulphate (SAS) precipitation followed by dialysis against PBS.
ポリ/モノ	ポリクローナル
アイソタイプ	IgG

アプリケーション

Our [Abpromise guarantee](#) covers the use of **ab85232** in the following tested applications.

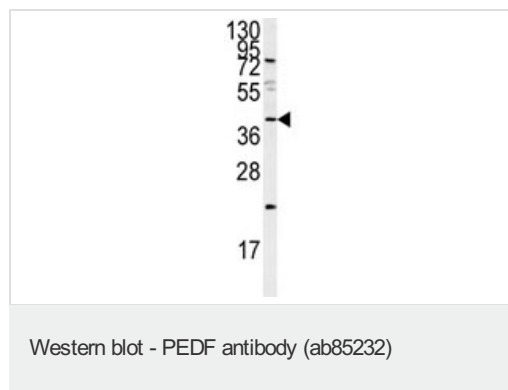
The application notes include recommended starting dilutions; optimal dilutions/concentrations should be determined by the end user.

アプリケーション	Abreviews	特記事項
WB		1/50 - 1/100. Detects a band of approximately 46 kDa (predicted molecular weight: 46 kDa).
ELISA		1/1000.

ターゲット情報

機能	Neurotrophic protein; induces extensive neuronal differentiation in retinoblastoma cells. Potent inhibitor of angiogenesis. As it does not undergo the S (stressed) to R (relaxed) conformational transition characteristic of active serpins, it exhibits no serine protease inhibitory activity.
組織特異性	Retinal pigment epithelial cells and blood plasma.
配列類似性	Belongs to the serpin family.
発生段階	Expressed in quiescent cells.
ドメイン	The N-terminal (AA 44-121) exhibits neurite outgrowth-inducing activity. The C-terminal exposed loop (AA 382-418) is essential for serpin activity.
翻訳後修飾	The N-terminus is blocked. Extracellular phosphorylation enhances antiangiogenic activity. N- and O-glycosylated. O-glycosylated with a core 1 or possibly core 8 glycan.
細胞内局在	Secreted. Melanosome. Enriched in stage I melanosomes.

画像



Anti-PEDF antibody (ab85232) at 1/50 dilution + K562 cell line lysate at 35 µg

Predicted band size: 46 kDa

Observed band size: 46 kDa

Additional bands at: 24 kDa, 85 kDa. We are unsure as to the identity of these extra bands.

Please note: All products are "FOR RESEARCH USE ONLY AND ARE NOT INTENDED FOR DIAGNOSTIC OR THERAPEUTIC USE"

Our Abpromise to you: Quality guaranteed and expert technical support

- Replacement or refund for products not performing as stated on the datasheet
- Valid for 12 months from date of delivery
- Response to your inquiry within 24 hours
- We provide support in Chinese, English, French, German, Japanese and Spanish
- Extensive multi-media technical resources to help you
- We investigate all quality concerns to ensure our products perform to the highest standards

If the product does not perform as described on this datasheet, we will offer a refund or replacement. For full details of the Abpromise, please visit <http://www.abcam.co.jp/abpromise> or contact our technical team.

Terms and conditions

- Guarantee only valid for products bought direct from Abcam or one of our authorized distributors