

Product datasheet

Anti-AKT3 antibody [9B2] ab84985

1 References [画像数 2](#)

製品の概要

製品名	Anti-AKT3 antibody [9B2]
製品の詳細	Mouse monoclonal [9B2] to AKT3
由来種	Mouse
アプリケーション	適用あり: WB, ICC/IF
種交差性	交差種: Mouse, Human
免疫原	Recombinant fragment, corresponding to amino acids 2-479 of Human AKT3 expressed in E.coli
ポジティブ・コントロール	BALB/C 3T3 cell lysate, human lung.

製品の特性

製品の状態	Liquid
保存方法	Shipped at 4°C. Upon delivery aliquot and store at -20°C. Avoid freeze / thaw cycles.
バッファー	Preservative: 0.02% Sodium Azide Constituents: 50% Glycerol, 1% BSA, PBS, pH 7.3
精製度	Immunogen affinity purified
特記事項(精製)	Purified from mouse ascites fluids by affinity chromatography.
ポリ/モノ	モノクローナル
クローン名	9B2
アイソタイプ	IgG3

アプリケーション

Our [Abpromise guarantee](#) covers the use of **ab84985** in the following tested applications.

The application notes include recommended starting dilutions; optimal dilutions/concentrations should be determined by the end user.

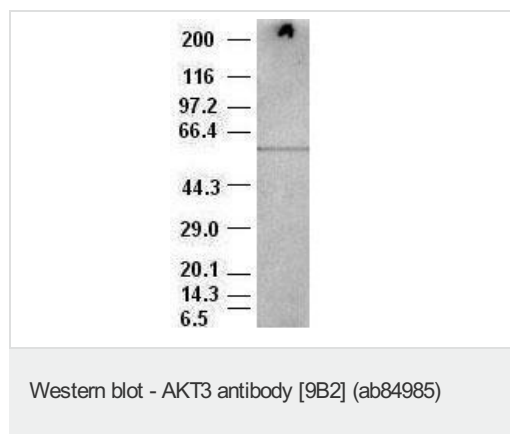
アプリケーション	Abreviews	特記事項
WB		1/500. Predicted molecular weight: 56 kDa.

アプリケーション	Abreviews	特記事項
ICC/IF		1/100.

ターゲット情報

機能	IGF-1 leads to the activation of AKT3, which may play a role in regulating cell survival. Capable of phosphorylating several known proteins. Truncated isoform 2/PKB gamma 1 without the second serine phosphorylation site could still be stimulated but to a lesser extent.
組織特異性	In adult tissues, it is highly expressed in brain, lung and kidney, but weakly in heart, testis and liver. In fetal tissues, it is highly expressed in heart, liver and brain and not at all in kidney.
配列類似性	Belongs to the protein kinase superfamily. AGC Ser/Thr protein kinase family. RAC subfamily. Contains 1 AGC-kinase C-terminal domain. Contains 1 PH domain. Contains 1 protein kinase domain.
ドメイン	Binding of the PH domain to the phosphatidylinositol 3-kinase alpha (PI(3)K) results in its targeting to the plasma membrane.
翻訳後修飾	Phosphorylation on Thr-305 and Ser-472 is required for full activity (By similarity). Phosphorylated upon DNA damage, probably by ATM or ATR. Ubiquitinated. When fully phosphorylated and translocated into the nucleus, undergoes 'Lys-48'-polyubiquitination catalyzed by TTC3, leading to its degradation by the proteasome.
細胞内局在	Cytoplasm. Membrane. Membrane-associated after cell stimulation leading to its translocation.

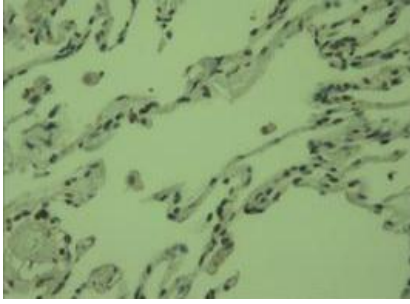
画像



Anti-AKT3 antibody [9B2] (ab84985) at 1/500 dilution + Balb/C 3T3 cell lysate

Predicted band size: 56 kDa

HEK293T cell lysates were generated from transient transfection of the cDNA clone RC224906



ab84985 staining AKT3 in paraffin-embedded lung by immunohistochemistry.

Immunohistochemistry (Formalin/PFA-fixed paraffin-embedded sections) - AKT3 antibody [9B2] (ab84985)

Please note: All products are "FOR RESEARCH USE ONLY AND ARE NOT INTENDED FOR DIAGNOSTIC OR THERAPEUTIC USE"

Our Abpromise to you: Quality guaranteed and expert technical support

- Replacement or refund for products not performing as stated on the datasheet
- Valid for 12 months from date of delivery
- Response to your inquiry within 24 hours
- We provide support in Chinese, English, French, German, Japanese and Spanish
- Extensive multi-media technical resources to help you
- We investigate all quality concerns to ensure our products perform to the highest standards

If the product does not perform as described on this datasheet, we will offer a refund or replacement. For full details of the Abpromise, please visit <http://www.abcam.co.jp/abpromise> or contact our technical team.

Terms and conditions

- Guarantee only valid for products bought direct from Abcam or one of our authorized distributors