


Product datasheet

Anti-EEF2K antibody ab84756

画像数 3

製品の概要

製品名	Anti-EEF2K antibody
製品の詳細	Rabbit polyclonal to EEF2K
アプリケーション	適用あり: IHC-P
種交差性	交差種: Mouse, Human 交差が予測される動物種: Rat, Rabbit, Horse, Guinea pig, Cow, Dog, Pig, Chimpanzee, Rhesus monkey, Gorilla, Tilapia, Orangutan, Elephant 
免疫原	Synthetic peptide corresponding to a region between residue 675 and 725 of Human EEF2K (NP_037434.1).
ポジティブ・コントロール	Human breast carcinoma, colon carcinoma, linitis plastica stomach cancer, ovarian carcinoma, prostate carcinoma, skin melanoma, small cell lung cancer and stomach adenocarcinoma. Mouse renal cell carcinoma and teratoma.

製品の特性

製品の状態	Liquid
保存方法	Shipped at 4°C. Upon delivery aliquot and store at -20°C. Avoid freeze / thaw cycles.
バッファー	Preservative: 0.09% Sodium Azide Constituents: 0.1% BSA, Tris buffered saline
精製度	Immunogen affinity purified
ポリ/モノ	ポリクローナル
アイソタイプ	IgG

アプリケーション

Our [Abpromise guarantee](#) covers the use of **ab84756** in the following tested applications.

The application notes include recommended starting dilutions; optimal dilutions/concentrations should be determined by the end user.

アプリケーション	Abreviews	特記事項
IHC-P		

追加情報 IHC-P: 1/100 - 1/500. Epitope exposure is recommended. Epitope exposure with citrate buffer

will enhance staining.

Not yet tested in other applications.

Optimal dilutions/concentrations should be determined by the end user.

## ターゲット情報

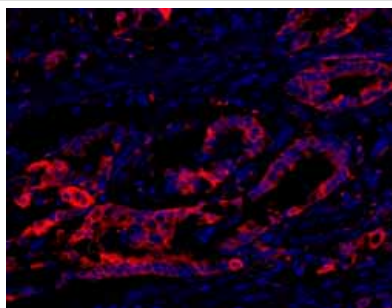
---

機能	Phosphorylates eukaryotic elongation factor-2. Binds calmodulin.
配列類似性	Belongs to the protein kinase superfamily. Alpha-type protein kinase family. Contains 1 alpha-type protein kinase domain.

---

## 画像

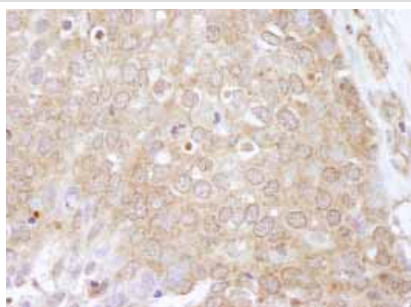
---



ab84756, at 1/100 dilution, staining EEF2K in formalin-fixed, paraffin-embedded human colon carcinoma by Immunohistochemistry using a Red-fluorescent goat anti-rabbit IgG highly cross-adsorbed Hilyte Plus™555 secondary antibody at a dilution of 1/100.

Immunohistochemistry (Formalin/PFA-fixed paraffin-embedded sections) - EEF2K antibody (ab84756)

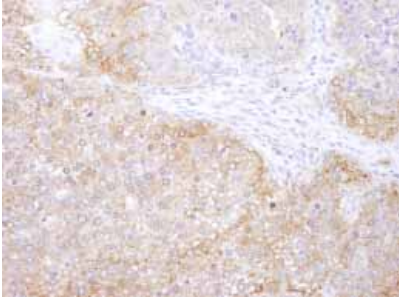
---



ab84756, at 1/250 dilution, staining EEF2K in formalin-fixed, paraffin-embedded human breast carcinoma by Immunohistochemistry using DAB staining.

Immunohistochemistry (Formalin/PFA-fixed paraffin-embedded sections) - EEF2K antibody (ab84756)

---



ab84756, at 1/250 dilution, staining EEF2K in formalin-fixed, paraffin-embedded mouse teratoma by Immunohistochemistry using DAB staining.

Immunohistochemistry (Formalin/PFA-fixed paraffin-embedded sections) - EEF2K antibody (ab84756)

**Please note:** All products are "FOR RESEARCH USE ONLY AND ARE NOT INTENDED FOR DIAGNOSTIC OR THERAPEUTIC USE"

### **Our Abpromise to you: Quality guaranteed and expert technical support**

- Replacement or refund for products not performing as stated on the datasheet
- Valid for 12 months from date of delivery
- Response to your inquiry within 24 hours
  
- We provide support in Chinese, English, French, German, Japanese and Spanish
- Extensive multi-media technical resources to help you
- We investigate all quality concerns to ensure our products perform to the highest standards

If the product does not perform as described on this datasheet, we will offer a refund or replacement. For full details of the Abpromise, please visit <http://www.abcam.co.jp/abpromise> or contact our technical team.

### **Terms and conditions**

- Guarantee only valid for products bought direct from Abcam or one of our authorized distributors