

Product datasheet

Anti-CENPM antibody ab84669

画像数 2

製品の概要

製品名	Anti-CENPM antibody
製品の詳細	Rabbit polyclonal to CENPM
由来種	Rabbit
アプリケーション	適用あり: ICC/IF, WB
種交差性	交差種: Human 交差が予測される動物種: Rabbit, Horse, Pig 
免疫原	Synthetic peptide corresponding to a region within internal sequence amino acids 131-180 (CDLEVEGFRA TMAQRLVRVL QICAGHVPGV SALNLLSLLR SSEGPSLEDL) of Human CENPM (NP_076958). Run BLAST with ExPASy Run BLAST with NCBI
ポジティブ・コントロール	HepG2 cell lysate.

製品の特性

製品の状態	Liquid
保存方法	Shipped at 4°C. Upon delivery aliquot and store at -20°C or -80°C. Avoid repeated freeze / thaw cycles.
バッファー	Preservative: None Constituents: 2% Sucrose, PBS
精製度	Immunogen affinity purified
ポリ/モノ	ポリクローナル
アイソタイプ	IgG

アプリケーション

Our [Abpromise guarantee](#) covers the use of **ab84669** in the following tested applications.

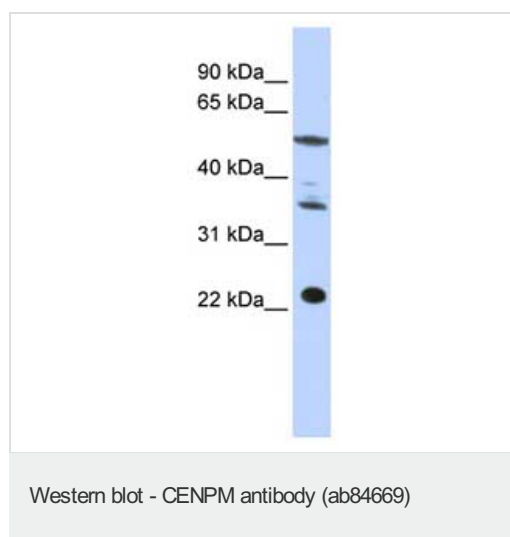
The application notes include recommended starting dilutions; optimal dilutions/concentrations should be determined by the end user.

アプリケーション	Abreviews	特記事項
ICC/IF		Use at an assay dependent concentration.
WB		Use a concentration of 1 µg/ml. Predicted molecular weight: 20 kDa. Good results were obtained when blocked with 5% non-fat dry milk in 0.05% PBS-T.

ターゲット情報

関連性	CENPM (Centromere protein M) is a component of the CENPA-NAC (nucleosome associated) complex, a complex that plays a central role in kinetochore protein assembly, mitotic cell cycle progression and chromosome segregation.
細胞内局在	Cytoplasmic and Nuclear. Note: Nuclear in non confluent cells and cytoplasmic in confluent or dividing cells. Localizes in the kinetochore domain of centromeres.

画像



Anti-CENPM antibody (ab84669) at 1 µg/ml
(in 5% skim milk / PBS buffer) + HepG2 cell
lysate at 10 µg

Secondary

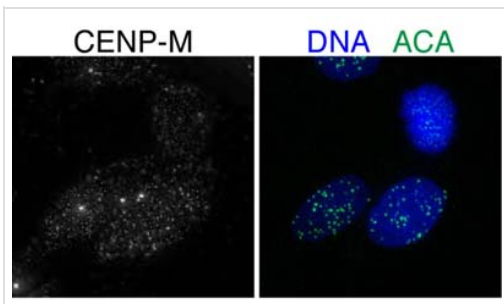
HRP conjugated anti-Rabbit IgG at 1/50000
dilution

Predicted band size: 20 kDa

Observed band size: 24 kDa

Additional bands at: approx. 35 kDa,
approx. 50 kDa. We are unsure as to the
identity of these extra bands.

Gel concentration: 12%



ab84669 staining CENPM in cells by
Immunocytochemistry/ Immunofluorescence.

Immunocytochemistry/ Immunofluorescence -
CENPM antibody (ab84669)

Please note: All products are "FOR RESEARCH USE ONLY AND ARE NOT INTENDED FOR DIAGNOSTIC OR THERAPEUTIC USE"

Our Abpromise to you: Quality guaranteed and expert technical support

- Replacement or refund for products not performing as stated on the datasheet
- Valid for 12 months from date of delivery
- Response to your inquiry within 24 hours
- We provide support in Chinese, English, French, German, Japanese and Spanish
- Extensive multi-media technical resources to help you
- We investigate all quality concerns to ensure our products perform to the highest standards

If the product does not perform as described on this datasheet, we will offer a refund or replacement. For full details of the Abpromise, please visit <http://www.abcam.co.jp/abpromise> or contact our technical team.

Terms and conditions

- Guarantee only valid for products bought direct from Abcam or one of our authorized distributors