

## Product datasheet

# Anti-Neuroglycan C antibody ab84633

### 画像数 1

#### 製品の概要

製品名	Anti-Neuroglycan C antibody
製品の詳細	Rabbit polyclonal to Neuroglycan C
由来種	Rabbit
アプリケーション	適用あり: WB
種交差性	交差種: Human 交差が予測される動物種: Mouse, Rat, Horse, Guinea pig, Cow, Cat
免疫原	Synthetic peptide corresponding to a region within N terminal amino acids 108-157 (LGGVTAEAGS GDAQALPATL QAPHEVLGQS IMPPAIPPEAT EASGPPSPTP) of Human Neuroglycan C (NP_006565). <a href="#">Run BLAST with ExPASy</a> <a href="#">Run BLAST with NCBI</a>
ポジティブ・コントロール	MCF7 cell lysate.

#### 製品の特性

製品の状態	Liquid
保存方法	Shipped at 4°C. Upon delivery aliquot and store at -20°C. Avoid repeated freeze / thaw cycles.
バッファー	Preservative: None Constituents: 2% Sucrose, PBS
精製度	Immunogen affinity purified
ポリ/モノ	ポリクローナル
アイソタイプ	IgG

#### アプリケーション

Our [Abpromise guarantee](#) covers the use of **ab84633** in the following tested applications.

The application notes include recommended starting dilutions; optimal dilutions/concentrations should be determined by the end user.

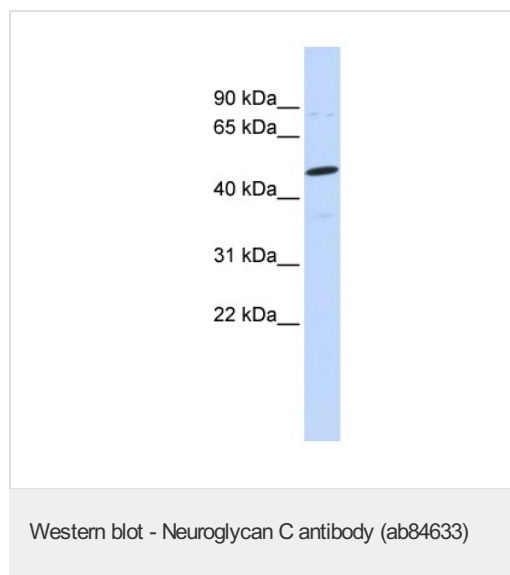
アプリケーション	Abreviews	特記事項
----------	-----------	------

アプリケーション	Abreviews	特記事項
WB		Use a concentration of 1 µg/ml. Predicted molecular weight: 57 kDa. Good results were obtained when blocked with 5% non-fat dry milk in 0.05% PBS-T.

## ターゲット情報

機能	May function as a growth and differentiation factor involved in neuritogenesis. May induce ERBB3 activation.
組織特異性	Restricted to brain (at protein level).
配列類似性	Contains 1 EGF-like domain.
発生段階	Expressed in brain of 3 months, 5 and 10-year-old individuals.
翻訳後修飾	N-glycosylated. O-glycosylated; contains chondroitin sulfate glycans. Part-time proteoglycan, expressed in part as a proteoglycan exhibiting chondroitin sulfate glycans and in part as a non-proteoglycan form. The relative amount of both forms depends on tissues and tissues maturation. Phosphorylated; in intracellular and extracellular parts.
細胞内局在	Cell membrane. Endoplasmic reticulum membrane. Golgi apparatus membrane. In neurons, localizes to synaptic junctions (By similarity). Also detected in the endoplasmic reticulum and the Golgi (By similarity). Partially enriched in lipid rafts.

## 画像



Anti-Neuroglycan C antibody (ab84633) at 1 µg/ml (in 5% skim milk / PBS buffer) + MCF7 cell lysate at 10 µg

### Secondary

HRP conjugated anti-Rabbit IgG at 1/50000 dilution

**Predicted band size:** 57 kDa

**Observed band size:** 50 kDa

Gel concentration: 12%

**Please note:** All products are "FOR RESEARCH USE ONLY AND ARE NOT INTENDED FOR DIAGNOSTIC OR THERAPEUTIC USE"

**Our Abpromise to you: Quality guaranteed and expert technical support**

- Replacement or refund for products not performing as stated on the datasheet
- Valid for 12 months from date of delivery
- Response to your inquiry within 24 hours
  
- We provide support in Chinese, English, French, German, Japanese and Spanish
- Extensive multi-media technical resources to help you
- We investigate all quality concerns to ensure our products perform to the highest standards

If the product does not perform as described on this datasheet, we will offer a refund or replacement. For full details of the Abpromise, please visit <http://www.abcam.co.jp/abpromise> or contact our technical team.

### **Terms and conditions**

---

- Guarantee only valid for products bought direct from Abcam or one of our authorized distributors