


Product datasheet

Anti-RRP1B antibody ab84522

画像数 1

製品の概要

製品名	Anti-RRP1B antibody
製品の詳細	Rabbit polyclonal to RRP1B
由来種	Rabbit
アプリケーション	適用あり: WB
種交差性	交差種: Human 交差が予測される動物種: Mouse, Rat, Rabbit, Horse, Chicken, Guinea pig, Cow, Cat, Dog 
免疫原	Synthetic peptide corresponding to a region within internal sequence amino acids 684-733 (VTFGLNRNMT AEFKKTDKSI LVSP TGPSRV AFDPEQKPLH GVLKTPTSSP) of Human RRP1B (NP_055871). Run BLAST with ExPASy Run BLAST with NCBI
ポジティブ・コントロール	MCF7 cell lysate.

製品の特性

製品の状態	Liquid
保存方法	Shipped at 4°C. Upon delivery aliquot and store at -20°C. Avoid repeated freeze / thaw cycles.
バッファー	Preservative: None Constituents: 2% Sucrose, PBS
精製度	Immunogen affinity purified
ポリモノ	ポリクローナル
アイソタイプ	IgG

アプリケーション

Our [Abpromise guarantee](#) covers the use of **ab84522** in the following tested applications.

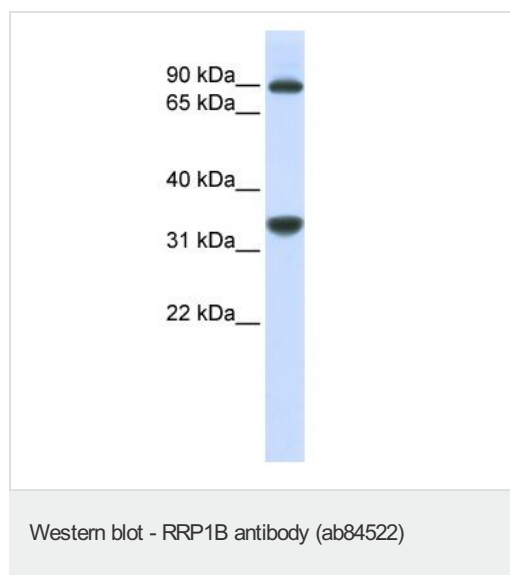
The application notes include recommended starting dilutions; optimal dilutions/concentrations should be determined by the end user.

アプリケーション	Abreviews	特記事項
WB		Use a concentration of 1 µg/ml. Predicted molecular weight: 84 kDa. Good results were obtained when blocked with 5% non-fat dry milk in 0.05% PBS-T.

ターゲット情報

関連性	RRP1B belongs to the RRP1 family. It may be a novel susceptibility gene for breast cancer progression and metastasis.
細胞内局在	Nuclear; nucleolus.

画像



Anti-RRP1B antibody (ab84522) at 1 µg/ml (in 5% skim milk / PBS buffer) + MCF7 cell lysate at 10 µg

Secondary

HRP conjugated anti-Rabbit IgG at 1/50000 dilution

Predicted band size: 84 kDa

Observed band size: 90 kDa

Additional bands at: 35 kDa. We are unsure as to the identity of these extra bands.

Gel concentration: 12%

Please note: All products are "FOR RESEARCH USE ONLY AND ARE NOT INTENDED FOR DIAGNOSTIC OR THERAPEUTIC USE"

Our Abpromise to you: Quality guaranteed and expert technical support

- Replacement or refund for products not performing as stated on the datasheet
- Valid for 12 months from date of delivery
- Response to your inquiry within 24 hours
- We provide support in Chinese, English, French, German, Japanese and Spanish
- Extensive multi-media technical resources to help you
- We investigate all quality concerns to ensure our products perform to the highest standards

If the product does not perform as described on this datasheet, we will offer a refund or replacement. For full details of the Abpromise,

please visit <http://www.abcam.co.jp/abpromise> or contact our technical team.

Terms and conditions

- Guarantee only valid for products bought direct from Abcam or one of our authorized distributors