


Product datasheet

Anti-DPCD antibody ab83476

画像数 1

製品の概要

| | |
|--------------|---|
| 製品名 | Anti-DPCD antibody |
| 製品の詳細 | Rabbit polyclonal to DPCD |
| 由来種 | Rabbit |
| アプリケーション | 適用あり: WB, ELISA |
| 種交差性 | 交差種: Human 交差が予測される動物種: Mouse, Rat, Rabbit, Horse, Chicken, Guinea pig, Cow, Cat, Dog, Drosophila melanogaster  |
| 免疫原 | Synthetic peptide corresponding to a region within internal sequence amino acids 72-121 (APLGAGNLGP ELIKESNANP IFMRKDTKMS FQWRIRNLGY PKDVYSVSVD) of hman DPCD (NP_056263). Run BLAST with ExPASy Run BLAST with NCBI |
| ポジティブ・コントロール | Hela cell lysate. |

製品の特性

| | |
|----------|--|
| 製品の状態 | Liquid |
| 保存方法 | Shipped at 4°C. Upon delivery aliquot and store at -20°C. Avoid repeated freeze / thaw cycles. |
| バッファー | Preservative: None Constituents: 2% Sucrose, PBS |
| 精製度 | Immunogen affinity purified |
| 特記事項(精製) | Purified by peptide affinity chromatography method. |
| ポリ/モノ | ポリクローナル |
| アイソタイプ | IgG |

アプリケーション

Our [Abpromise guarantee](#) covers the use of **ab83476** in the following tested applications.

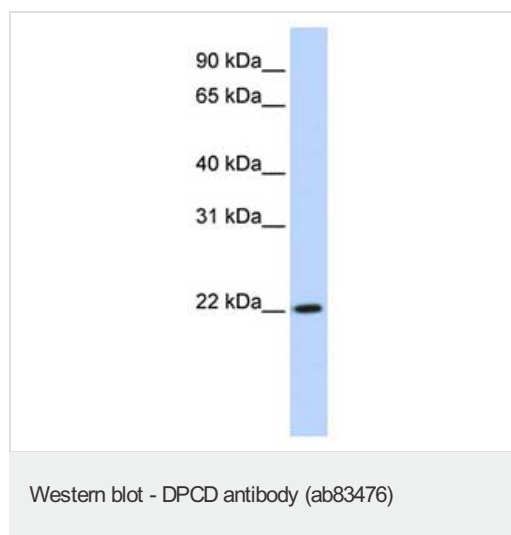
The application notes include recommended starting dilutions; optimal dilutions/concentrations should be determined by the end user.

| アプリケーション | Abreviews | 特記事項 |
|----------|-----------|--|
| WB | | Use a concentration of 1 µg/ml. Predicted molecular weight: 23 kDa. Good results were obtained when blocked with 5% non-fat dry milk in 0.05% PBS-T. |
| ELISA | | Use at an assay dependent concentration. Titre using peptide based assay: 1/312500. |

ターゲット情報

| | |
|-------|--|
| 機能 | May play a role in the formation or function of ciliated cells. |
| 組織特異性 | Highly expressed in the testis. Weakly expressed in pancreas, skeletal muscle and heart. Expression increases during ciliated cell differentiation. |
| 配列類似性 | Belongs to the DPCD family. |

画像



Anti-DPCD antibody (ab83476) at 1 µg/ml (in 5% skim milk / PBS buffer) + Hela cell lysate at 10 µg

Secondary

HRP conjugated anti-Rabbit IgG at 1/50000 dilution

Predicted band size: 23 kDa

Observed band size: 23 kDa

Gel concentration: 12%

Please note: All products are "FOR RESEARCH USE ONLY AND ARE NOT INTENDED FOR DIAGNOSTIC OR THERAPEUTIC USE"

Our Abpromise to you: Quality guaranteed and expert technical support

- Replacement or refund for products not performing as stated on the datasheet
- Valid for 12 months from date of delivery
- Response to your inquiry within 24 hours
- We provide support in Chinese, English, French, German, Japanese and Spanish
- Extensive multi-media technical resources to help you

- We investigate all quality concerns to ensure our products perform to the highest standards

If the product does not perform as described on this datasheet, we will offer a refund or replacement. For full details of the Abpromise, please visit <http://www.abcam.co.jp/abpromise> or contact our technical team.

Terms and conditions

- Guarantee only valid for products bought direct from Abcam or one of our authorized distributors