


Product datasheet

Anti-RHOXF2 antibody ab83455

画像数 2

製品の概要

製品名	Anti-RHOXF2 antibody
製品の詳細	Rabbit polyclonal to RHOXF2
由来種	Rabbit
アプリケーション	適用あり: WB, ELISA, IHC-P
種交差性	交差種: Human 交差が予測される動物種: Pig 
免疫原	Synthetic peptide within residues: DQSEKEPGQQ YSRPQGAVGG LEPGNAQQPN VHAFTPLQLQ ELERIFQREQ , corresponding to internal sequence amino acids 108-157 of Human RHOXF2 (NP_115887) <a href="#">Run BLAST with ExPASy</a> <a href="#">Run BLAST with NCBI</a>
ポジティブ・コントロール	HeLa cell lysate.

製品の特性

製品の状態	Liquid
保存方法	Shipped at 4°C. Upon delivery aliquot and store at -20°C. Avoid repeated freeze / thaw cycles.
バッファー	Preservative: None Constituents: 2% Sucrose, PBS
精製度	Immunogen affinity purified
特記事項(精製)	ab83455 is purified by a peptide affinity chromatography method.
ポリ/モノ	ポリクローナル
アイソタイプ	IgG

アプリケーション

Our [Abpromise guarantee](#) covers the use of **ab83455** in the following tested applications.

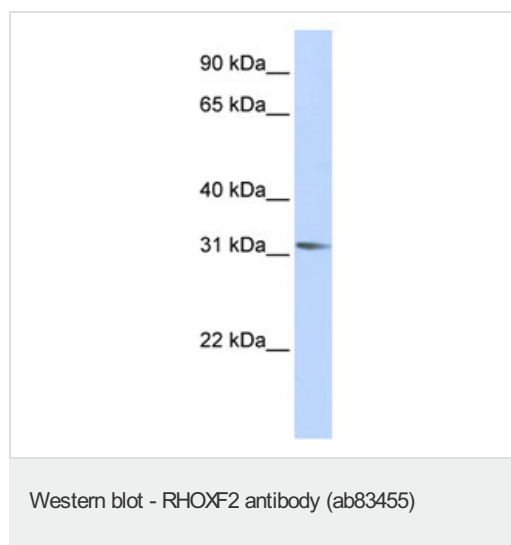
The application notes include recommended starting dilutions; optimal dilutions/concentrations should be determined by the end user.

アプリ ケーション	Abreviews	特記事項
WB		Use a concentration of 1 µg/ml. Detects a band of approximately 32 kDa (predicted molecular weight: 32 kDa). Good results were obtained when blocked with 5% non-fat dry milk in 0.05% PBS-T.
ELISA		Use at an assay dependent concentration. ELISA titre using peptide based assay: 1/1562500.
IHC-P		Use a concentration of 10 µg/ml.

## ターゲット情報

組織特異性	Testis. Not detected in epididymis nor placenta.
配列類似性	Belongs to the paired-like homeobox family. PEPP subfamily. Contains 1 homeobox DNA-binding domain.
細胞内局在	Nucleus.

## 画像



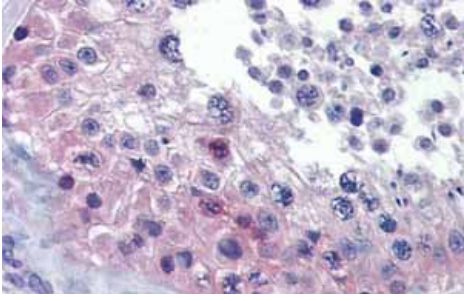
Anti-RHOXF2 antibody (ab83455) at 1 µg/ml  
+ HeLa cell lysate at 10 µg with skim milk/  
PBS at 5 %

### Secondary

HRP conjugated anti-Rabbit IgG at 1/50000  
dilution

**Predicted band size:** 32 kDa

**Observed band size:** 32 kDa



Immunohistochemistry (Formalin/PFA-fixed paraffin-embedded sections) analysis of human testis tissue labelling RHOXF2 with ab83455 at 10µg/ml.

Immunohistochemistry (Formalin/PFA-fixed paraffin-embedded sections)-Anti-RHOXF2 antibody(ab83455)

**Please note:** All products are "FOR RESEARCH USE ONLY AND ARE NOT INTENDED FOR DIAGNOSTIC OR THERAPEUTIC USE"

### **Our Abpromise to you: Quality guaranteed and expert technical support**

- Replacement or refund for products not performing as stated on the datasheet
- Valid for 12 months from date of delivery
- Response to your inquiry within 24 hours
- We provide support in Chinese, English, French, German, Japanese and Spanish
- Extensive multi-media technical resources to help you
- We investigate all quality concerns to ensure our products perform to the highest standards

If the product does not perform as described on this datasheet, we will offer a refund or replacement. For full details of the Abpromise, please visit <http://www.abcam.co.jp/abpromise> or contact our technical team.

### **Terms and conditions**

- Guarantee only valid for products bought direct from Abcam or one of our authorized distributors