


Product datasheet

Anti-C1ORF95 antibody ab82936

画像数 1

製品の概要

製品名	Anti-C1ORF95 antibody
製品の詳細	Rabbit polyclonal to C1ORF95
アプリケーション	適用あり: WB, ELISA
種交差性	交差種: Human 交差が予測される動物種: Mouse, Rat, Rabbit, Cow, Dog, Pig 
免疫原	Synthetic peptide corresponding to a region within the internal sequence amino acids 92-141 (VFWLNIAAAL IQILTAVMV GWIMSIFWGM DMVILAISQG YKEQGIPQQL) of Human C1ORF95 (NP_001003665) <a href="#">Run BLAST with ExPASy</a> <a href="#">Run BLAST with NCBI</a>
ポジティブ・コントロール	Fetal heart lysate.

製品の特性

製品の状態	Liquid
保存方法	Shipped at 4°C. Upon delivery aliquot and store at -20°C. Avoid freeze / thaw cycles.
バッファー	Preservative: None Constituents: 2% Sucrose, PBS
精製度	Immunogen affinity purified
ポリ/モノ	ポリクローナル
アイソタイプ	IgG

アプリケーション

Our [Abpromise guarantee](#) covers the use of **ab82936** in the following tested applications.

The application notes include recommended starting dilutions; optimal dilutions/concentrations should be determined by the end user.

アプリケーション	Abreviews	特記事項

アプリ ケーション	Abreviews	特記事項
--------------	-----------	------

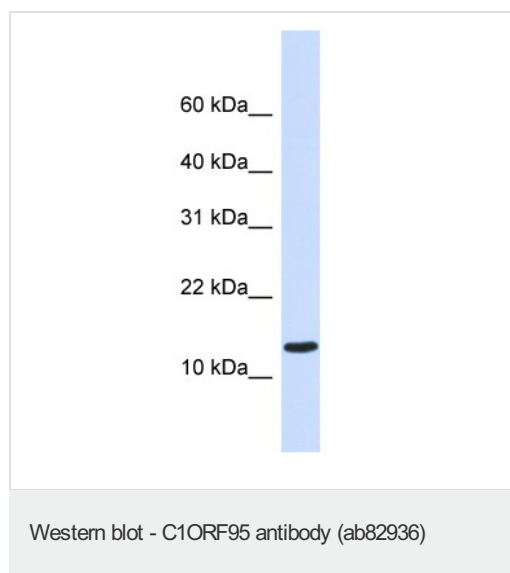
WB Use a concentration of 1 µg/ml. Detects a band of approximately 15 kDa (predicted molecular weight: 15 kDa). Good results were obtained when blocked with 5% non-fat dry milk in 0.05% PBS-T.

ELISA Use at an assay dependent concentration.  
Titre using peptide based assay 1/312500.

## ターゲット情報

**関連性** C1ORF95 belongs to the SPEC3 family. The exact function of C1ORF95 remains unknown.  
**細胞内局在** Membrane; Multi-pass membrane protein.

## 画像



Anti-C1ORF95 antibody (ab82936) at 1 µg/ml  
+ fetal heart lysate at 10 µg

### Secondary

HRP conjugated anti-Rabbit IgG at 1/50000  
dilution

**Predicted band size** : 15 kDa

**Observed band size** : 15 kDa

**Please note:** All products are "FOR RESEARCH USE ONLY AND ARE NOT INTENDED FOR DIAGNOSTIC OR THERAPEUTIC USE"

## Our Abpromise to you: Quality guaranteed and expert technical support

- Replacement or refund for products not performing as stated on the datasheet
- Valid for 12 months from date of delivery
- Response to your inquiry within 24 hours
- We provide support in Chinese, English, French, German, Japanese and Spanish
- Extensive multi-media technical resources to help you
- We investigate all quality concerns to ensure our products perform to the highest standards

If the product does not perform as described on this datasheet, we will offer a refund or replacement. For full details of the Abpromise, please visit <http://www.abcam.co.jp/abpromise> or contact our technical team.

## Terms and conditions

---

- Guarantee only valid for products bought direct from Abcam or one of our authorized distributors