

## Product datasheet

# Anti-MCM2 antibody [CRCT2.1] ab81706

### 画像数 2

#### 製品の概要

製品名	Anti-MCM2 antibody [CRCT2.1]
製品の詳細	Mouse monoclonal [CRCT2.1] to MCM2
アプリケーション	<b>適用あり:</b> WB, IHC-P
種交差性	<b>交差種:</b> Human
免疫原	Bacterially expressed human MCM2
エピトープ	Not determined
ポジティブ・コントロール	HeLa cells. Tonsil

#### 製品の特性

製品の状態	Liquid
保存方法	Shipped at 4°C. Upon delivery aliquot and store at -20°C or -80°C. Avoid repeated freeze / thaw cycles.
バッファー	Preservative: None Constituents: 10mM PBS, pH 7.4
精製度	Protein G purified
ポリ/モノ	モノクローナル
クローン名	CRCT2.1
アイソタイプ	IgG1

#### アプリケーション

Our [Abpromise guarantee](#) covers the use of **ab81706** in the following tested applications.

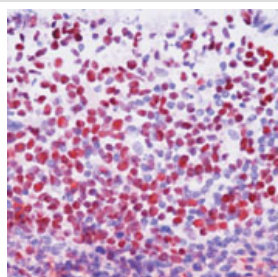
The application notes include recommended starting dilutions; optimal dilutions/concentrations should be determined by the end user.

アプリケーション	Abreviews	特記事項
WB		Use a concentration of 2 - 4 µg/ml. Predicted molecular weight: 102 kDa.
IHC-P		1/50. Perform heat mediated antigen retrieval before commencing with IHC staining protocol.

## ターゲット情報

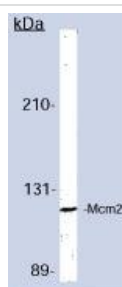
機能	Acts as component of the MCM2-7 complex (MCM complex) which is the putative replicative helicase essential for 'once per cell cycle' DNA replication initiation and elongation in eukaryotic cells. The active ATPase sites in the MCM2-7 ring are formed through the interaction surfaces of two neighboring subunits such that a critical structure of a conserved arginine finger motif is provided in trans relative to the ATP-binding site of the Walker A box of the adjacent subunit. The six ATPase active sites, however, are likely to contribute differentially to the complex helicase activity. Required for the entry in S phase and for cell division.
配列類似性	Belongs to the MCM family. Contains 1 MCM domain.
翻訳後修飾	Phosphorylated on Ser-108 by ATR in proliferating cells. Ser-108 proliferation is increased by genotoxic agents. Ser-40 is mediated by the CDC7-DBF4 and CDC7-DBF4B complexes, while Ser-53 phosphorylation is only mediated by the CDC7-DBF4 complex. Phosphorylation by the CDC7-DBF4 complex during G1/S phase is required for the initiation of DNA replication.
細胞内局在	Nucleus.

## 画像



Formalin fixed, paraffin embedded human tonsil tissue stained with anti MCM2 (form of ab81706 containing BSA and azide) at a dilution of 1/50. Peroxidase conjugate and AEC chromogen were used. Note nuclear staining of lymphocytes.

Immunohistochemistry (Formalin/PFA-fixed paraffin-embedded sections) - MCM2 antibody [CRCT2.1] - BSA and Azide free (ab81706)



anti MCM2 (form of ab81706 containing BSA and azide) at 4 µg/ml + human cells

**Predicted band size** : 102 kDa

**Observed band size** : 102 kDa

Western blot - MCM2 antibody [CRCT2.1] - BSA and Azide free (ab81706)

**Please note:** All products are "FOR RESEARCH USE ONLY AND ARE NOT INTENDED FOR DIAGNOSTIC OR THERAPEUTIC USE"

## **Our Abpromise to you: Quality guaranteed and expert technical support**

---

- Replacement or refund for products not performing as stated on the datasheet
- Valid for 12 months from date of delivery
- Response to your inquiry within 24 hours
  
- We provide support in Chinese, English, French, German, Japanese and Spanish
- Extensive multi-media technical resources to help you
- We investigate all quality concerns to ensure our products perform to the highest standards

If the product does not perform as described on this datasheet, we will offer a refund or replacement. For full details of the Abpromise, please visit <http://www.abcam.co.jp/abpromise> or contact our technical team.

## **Terms and conditions**

---

- Guarantee only valid for products bought direct from Abcam or one of our authorized distributors