

Product datasheet

Anti-ROM1 antibody ab80507

1 References [画像数 1](#)

製品の概要

製品名	Anti-ROM1 antibody
製品の詳細	Rabbit polyclonal to ROM1
由来種	Rabbit
アプリケーション	適用あり: WB, ELISA
種交差性	交差種: Cow, Human 交差が予測される動物種: Mouse, Rat, Rabbit, Horse, Guinea pig, Cat, Dog
免疫原	Synthetic peptide corresponding to a region within internal sequence amino acids 216-265 (CCNPHSPRPC LQNRLSDSYA HPLFDPRQPN QNLWAQGCHE VLLEHLQDLA) of human ROM1 (NP_000318) Run BLAST with ExPASy Run BLAST with NCBI
ポジティブ・コントロール	Transfected 293T cell lysate

製品の特性

製品の状態	Liquid
保存方法	Shipped at 4°C. Upon delivery aliquot and store at -20°C or -80°C. Avoid repeated freeze / thaw cycles.
バッファー	Preservative: None Constituents: 2% Sucrose, PBS
精製度	Immunogen affinity purified
ポリ/モノ	ポリクローナル
アイソタイプ	IgG

アプリケーション

Our [Abpromise guarantee](#) covers the use of **ab80507** in the following tested applications.

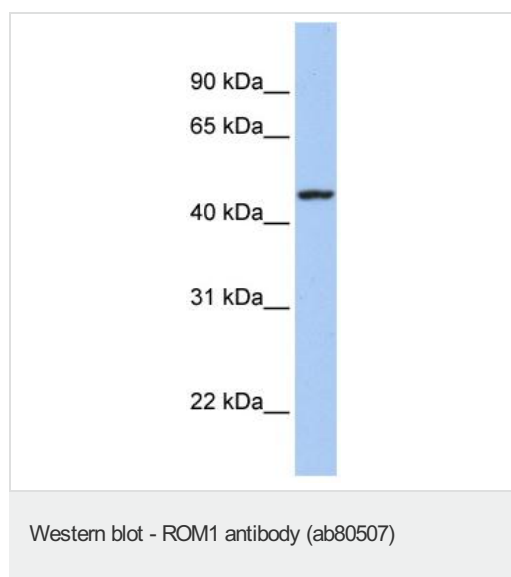
The application notes include recommended starting dilutions; optimal dilutions/concentrations should be determined by the end user.

アプリケーション	Abreviews	特記事項
WB		Use a concentration of 1 µg/ml. Predicted molecular weight: 37 kDa. Good results were obtained when blocked with 5% non-fat dry milk in 0.05% PBS-T.
ELISA		Use at an assay dependent concentration. ELISA titre using peptide based assay: 1/312500.

ターゲット情報

機能	May function as an adhesion molecule involved in stabilization and compaction of outer segment disks or in the maintenance of the curvature of the rim. It is essential for disk morphogenesis.
組織特異性	Retina (photoreceptor). In rim region of ROS (rod outer segment) disks.
関連疾患	Defects in ROM1 may cause retinitis pigmentosa (RP) [MIM:268000]; when associated with defects in PRPH2.
配列類似性	Belongs to the PRPH2/ROM1 family.
細胞内局在	Membrane.

画像



Anti-ROM1 antibody (ab80507) at 1/1 dilution
+ transfected 293T cell lysate at 10 µg with 5% skim milk / PBS buffer

Secondary

HRP conjugated anti-Rabbit IgG at 1/50000 dilution

Predicted band size: 37 kDa

Observed band size: 47 kDa

Please note: All products are "FOR RESEARCH USE ONLY AND ARE NOT INTENDED FOR DIAGNOSTIC OR THERAPEUTIC USE"

Our Promise to you: Quality guaranteed and expert technical support

- Replacement or refund for products not performing as stated on the datasheet
- Valid for 12 months from date of delivery
- Response to your inquiry within 24 hours
- We provide support in Chinese, English, French, German, Japanese and Spanish

- Extensive multi-media technical resources to help you
- We investigate all quality concerns to ensure our products perform to the highest standards

If the product does not perform as described on this datasheet, we will offer a refund or replacement. For full details of the Abpromise, please visit <http://www.abcam.co.jp/abpromise> or contact our technical team.

Terms and conditions

- Guarantee only valid for products bought direct from Abcam or one of our authorized distributors