

## Product datasheet

### Anti-DMTF1 antibody ab80308

#### 画像数 1

#### 製品の概要

製品名	Anti-DMTF1 antibody
製品の詳細	Rabbit polyclonal to DMTF1
アプリケーション	適用あり: WB
種交差性	交差種: Human 交差が予測される動物種: Mouse, Rat, Rabbit, Horse, Chicken, Guinea pig, Cow, Cat, Dog
免疫原	A synthetic peptide corresponding to a region of Human DMTF1
ポジティブ・コントロール	Transfected 293T cell lysates.

#### 製品の特性

製品の状態	Liquid
保存方法	Shipped at 4°C. Upon delivery aliquot and store at -20°C. Avoid freeze / thaw cycles.
バッファー	Preservative: None Constituents: 2% Sucrose, PBS
精製度	Immunogen affinity purified
ポリ/モノ	ポリクローナル
アイソタイプ	IgG

#### アプリケーション

Our [Abpromise guarantee](#) covers the use of **ab80308** in the following tested applications.

The application notes include recommended starting dilutions; optimal dilutions/concentrations should be determined by the end user.

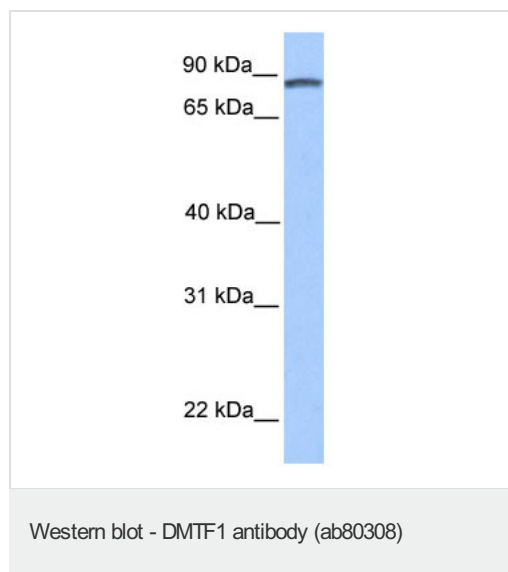
アプリケーション	Abreviews	特記事項
----------	-----------	------

WB		Use a concentration of 1 µg/ml. Detects a band of approximately 84 kDa (predicted molecular weight: 84 kDa). Good results were obtained when blocked with 5% non-fat dry milk in 0.05% PBS-T.
----	--	---

## ターゲット情報

機能	Transcriptional activator which activates the CDKN2A/ARF locus in response to Ras-Raf signaling, thereby promoting p53/TP53-dependent growth arrest (By similarity). Binds to the consensus sequence 5'-CCCG[GT]ATGT-3' (By similarity). Isoform 1 may cooperate with MYB to activate transcription of the ANPEP gene. Isoform 2 may antagonize transcriptional activation by isoform 1.
組織特異性	Expressed at relatively low levels in colonic mucosa, ovary, peripheral leukocytes, prostate and small intestine, and at higher levels in spleen, testis and thymus. Expressed in multiple regions of the brain and CNS including amygdala, caudate, corpus callosum, hippocampus, substantia nigra and subthalamic nucleus. Isoform 1 is the predominant isoform in monocytes, macrophages and neutrophils, isoform 2 is most strongly expressed in peripheral blood leukocytes and quiescent CD34 positive cells, and isoform 3 is expressed at low levels in all hematopoietic cell types. Expression is frequently reduced in non-small-cell lung carcinomas (NSCLC) due to hemizygous gene deletion, strongly suggesting that this locus is haploinsufficient for tumor suppression. Loss of this locus frequently occurs in tumors which retain wild-type CDKN2A/ARF and p53/TP53 loci. Hemizygous gene deletion has also been observed in leukemic blasts from patients with abnormalities of the long arm of chromosome 7.
配列類似性	Belongs to the DMTF1 family. Contains 1 HTH myb-type DNA-binding domain. Contains 2 Myb-like domains.
発生段階	Isoform 2 expression is down-regulated during myeloid differentiation, while the expression of isoform 1 and isoform 3 remain constant.
翻訳後修飾	Phosphorylated by the cyclin-D2/CDK4, cyclin-D3/CDK4 and cyclin-D2/CDK6 complexes and to a lesser extent by the cyclin-D1/CDK4 complex.
細胞内局在	Nucleus.

## 画像



Anti-DMTF1 antibody (ab80308) at 1 µg/ml +  
transfected 293T cell lysate at 10 µg

### Secondary

HRP conjugated anti-Rabbit IgG at 1/50000  
dilution

**Predicted band size** : 84 kDa

**Observed band size** : 84 kDa

**Please note:** All products are "FOR RESEARCH USE ONLY AND ARE NOT INTENDED FOR DIAGNOSTIC OR THERAPEUTIC USE"

## **Our Abpromise to you: Quality guaranteed and expert technical support**

---

- Replacement or refund for products not performing as stated on the datasheet
- Valid for 12 months from date of delivery
- Response to your inquiry within 24 hours
  
- We provide support in Chinese, English, French, German, Japanese and Spanish
- Extensive multi-media technical resources to help you
- We investigate all quality concerns to ensure our products perform to the highest standards

If the product does not perform as described on this datasheet, we will offer a refund or replacement. For full details of the Abpromise, please visit <http://www.abcam.co.jp/abpromise> or contact our technical team.

## **Terms and conditions**

---

- Guarantee only valid for products bought direct from Abcam or one of our authorized distributors