

Product datasheet

Anti-NeuroD1 antibody ab79478

画像数 1

製品の概要

製品名	Anti-NeuroD1 antibody
製品の詳細	Rabbit polyclonal to NeuroD1
由来種	Rabbit
特異性	ab79478 detects endogenous levels of total NeuroD1 protein.
アプリケーション	適用あり: WB, ELISA
種交差性	交差種: Human 交差が予測される動物種: Mouse, Rat ▲
免疫原	Synthetic non phosphopeptide derived from human NeuroD1 around the phosphorylation site of serine 272 (P-L-S <sup>P</sup> -P-P-)
ポジティブ・コントロール	HeLa cell extracts.

製品の特性

製品の状態	Liquid
保存方法	Shipped at 4°C. Store at -20°C. Stable for 12 months at -20°C.
バッファー	Preservative: 0.02% Sodium Azide Constituents: 50% Glycerol, PBS (without Mg <sup>2+</sup> and Ca <sup>2+</sup> ), 150mM Sodium chloride, pH 7.4
精製度	Immunogen affinity purified
特記事項(精製)	ab79478 was affinity purified from rabbit antiserum by affinity chromatography using epitope specific immunogen.
ポリ/モノ	ポリクローナル
アイソタイプ	IgG

アプリケーション

Our [Abpromise guarantee](#) covers the use of **ab79478** in the following tested applications.

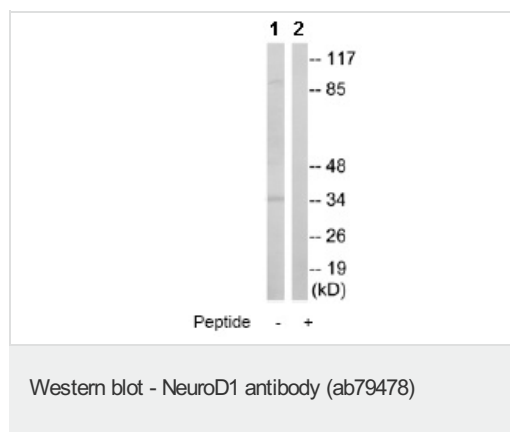
The application notes include recommended starting dilutions; optimal dilutions/concentrations should be determined by the end user.

アプリケーション	Abreviews	特記事項
WB		1/500 - 1/1000. Predicted molecular weight: 40 kDa.
ELISA		1/5000.

## ターゲット情報

機能	Differentiation factor required for dendrite morphogenesis and maintenance in the cerebellar cortex. Transcriptional activator. Binds to the insulin gene E-box.
関連疾患	Defects in NEUROD1 are the cause of maturity-onset diabetes of the young type 6 (MODY6) [MIM:606394]. MODY is a form of diabetes that is characterized by an autosomal dominant mode of inheritance, onset in childhood or early adulthood (usually before 25 years of age), a primary defect in insulin secretion and frequent insulin-independence at the beginning of the disease.
配列類似性	Contains 1 basic helix-loop-helix (bHLH) domain.
翻訳後修飾	Phosphorylated. In islet cells, phosphorylated on Ser-274 upon glucose stimulation; which may be required for nuclear localization. In activated neurons, phosphorylated on Ser-335; which promotes dendritic growth.
細胞内局在	Cytoplasm. Nucleus.

## 画像



**All lanes :** Anti-NeuroD1 antibody (ab79478)  
at 1/500 dilution

**Lane 1 :** HeLa cell extracts

**Lane 2 :** HeLa cell extracts with immunizing  
peptide at 10 µg

Lysates/proteins at 10 µg per lane.

**Predicted band size:** 40 kDa

**Observed band size:** 35 kDa

**Additional bands at:** 90 kDa. We are unsure  
as to the identity of these extra bands.

**Please note:** All products are "FOR RESEARCH USE ONLY AND ARE NOT INTENDED FOR DIAGNOSTIC OR THERAPEUTIC USE"

## Our Abpromise to you: Quality guaranteed and expert technical support

- Replacement or refund for products not performing as stated on the datasheet

- Valid for 12 months from date of delivery
- Response to your inquiry within 24 hours
  
- We provide support in Chinese, English, French, German, Japanese and Spanish
- Extensive multi-media technical resources to help you
- We investigate all quality concerns to ensure our products perform to the highest standards

If the product does not perform as described on this datasheet, we will offer a refund or replacement. For full details of the Abpromise, please visit <http://www.abcam.co.jp/abpromise> or contact our technical team.

### **Terms and conditions**

---

- Guarantee only valid for products bought direct from Abcam or one of our authorized distributors