

Product datasheet

Anti-Cyclin D3 antibody [DCS-28.1] (Biotin) ab79088

画像数 2

製品の概要

製品名	Anti-Cyclin D3 antibody [DCS-28.1] (Biotin)
製品の詳細	Mouse monoclonal [DCS-28.1] to Cyclin D3 (Biotin)
由来種	Mouse
標識	Biotin
アプリケーション	適用あり: WB, IP
種交差性	交差種: Rat, Human
免疫原	Purified human recombinant full length Cyclin D3 protein
ポジティブ・コントロール	LS174T and PC12 cells.

製品の特性

製品の状態	Liquid
保存方法	Shipped at 4°C. Store at +4°C short term (1-2 weeks). Store at -20°C or -80°C. Avoid freeze / thaw cycle.
バッファー	Preservative: 0.09% Sodium Azide Constituents: 0.2% BSA, 10mM PBS, pH 7.4
精製度	Protein G purified
特記事項 (精製)	ab79088 is purified from ascites fluid by Protein G chromatography.
ポリ/モノ	モノクローナル
クローン名	DCS-28.1
アイソタイプ	IgG1

アプリケーション

Our [Abpromise guarantee](#) covers the use of **ab79088** in the following tested applications.

The application notes include recommended starting dilutions; optimal dilutions/concentrations should be determined by the end user.

アプリケーション	Abreviews	特記事項
WB		

IP

追加情報

IP: Use at 2µg/mg of lysate.

WB: Use at a concentration of 1 - 2 µg/ml for 2hrs at RT. Detects a band of approximately 35 kDa (predicted molecular weight: 35 kDa).

Not yet tested in other applications.

Optimal dilutions/concentrations should be determined by the end user.

ターゲット情報

機能

Regulatory component of the cyclin D3-CDK4 (DC) complex that phosphorylates and inhibits members of the retinoblastoma (RB) protein family including RB1 and regulates the cell-cycle during G(1)/S transition. Phosphorylation of RB1 allows dissociation of the transcription factor E2F from the RB/E2F complex and the subsequent transcription of E2F target genes which are responsible for the progression through the G(1) phase. Hypophosphorylates RB1 in early G(1) phase. Cyclin D-CDK4 complexes are major integrators of various mitogenic and antimitogenic signals. Also substrate for SMAD3, phosphorylating SMAD3 in a cell-cycle-dependent manner and repressing its transcriptional activity. Component of the ternary complex, cyclin D3/CDK4/CDKN1B, required for nuclear translocation and activity of the cyclin D-CDK4 complex.

配列類似性

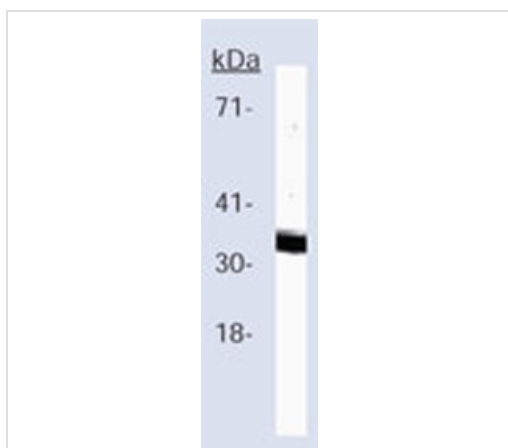
Belongs to the cyclin family. Cyclin D subfamily.

Contains 1 cyclin N-terminal domain.

細胞内局在

Nucleus. Cytoplasm. Membrane. Cyclin D-CDK4 complexes accumulate at the nuclear membrane and are then translocated to the nucleus through interaction with KIP/CIP family members.

画像



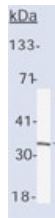
anti-Cyclin D3 at 2 µg/ml + a rat cell lysate

Predicted band size: 35 kDa**Observed band size:** 35 kDa

The purified form of this antibody was used for staining.

Western blot - Cyclin D3 antibody [DCS-28.1]

(Biotin) (ab79088)



Immunoprecipitation - Cyclin D3 antibody [DCS-28.1] (Biotin) (ab79088)

Detection of Cyclin D3 by Western Blot of Immunoprecipitate.

Staining of Cyclin D3 in a human cell lysate immunoprecipitated using ab79088 at 2µg/mg lysate. The purified form of this antibody was used for staining.

Please note: All products are "FOR RESEARCH USE ONLY AND ARE NOT INTENDED FOR DIAGNOSTIC OR THERAPEUTIC USE"

Our Abpromise to you: Quality guaranteed and expert technical support

- Replacement or refund for products not performing as stated on the datasheet
- Valid for 12 months from date of delivery
- Response to your inquiry within 24 hours
- We provide support in Chinese, English, French, German, Japanese and Spanish
- Extensive multi-media technical resources to help you
- We investigate all quality concerns to ensure our products perform to the highest standards

If the product does not perform as described on this datasheet, we will offer a refund or replacement. For full details of the Abpromise, please visit <http://www.abcam.co.jp/abpromise> or contact our technical team.

Terms and conditions

- Guarantee only valid for products bought direct from Abcam or one of our authorized distributors