

## Product datasheet

# Anti-JPH1 antibody ab79062

### 画像数 1

#### 製品の概要

|              |   |
|--------------|---|
| 製品名          | Anti-JPH1 antibody  |
| 製品の詳細        | Rabbit polyclonal to JPH1   |
| 由来種          | Rabbit  |
| アプリケーション     | <b>適用あり:</b> WB, ELISA  |
| 種交差性         | <b>交差種:</b> Mouse, Rat, Human   |
| 免疫原          | A 15 amino acid synthetic peptide near the carboxy terminus of human JPH1 (AAI39833). |
| ポジティブ・コントロール | 293 cell lysate.  |

#### 製品の特性

|          |   |
|----------|---|
| 製品の状態    | Liquid  |
| 保存方法     | Shipped at 4°C. Store at +4°C.                        |
| バッファー    | Preservative: 0.02% Sodium Azide<br>Constituents: PBS |
| 精製度      | Immunogen affinity purified                           |
| 特記事項(精製) | Affinity chromatography purified via peptide column   |
| ポリモノ     | ポリクローナル   |
| アイソタイプ   | IgG   |

#### アプリケーション

Our [Abpromise guarantee](#) covers the use of **ab79062** in the following tested applications.

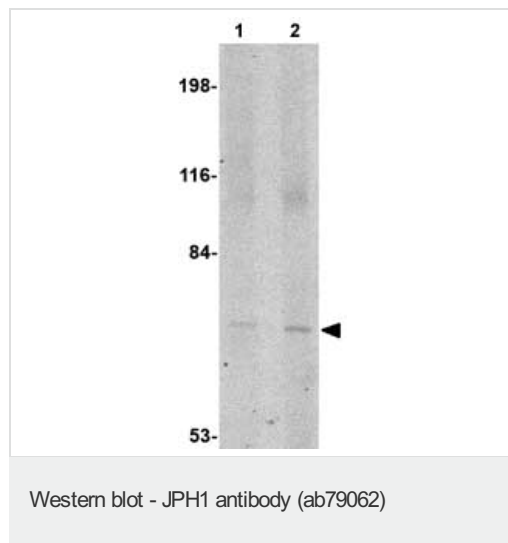
The application notes include recommended starting dilutions; optimal dilutions/concentrations should be determined by the end user.

| アプリケーション | Abreviews | 特記事項  |
|----------|-----------|---|
| WB       |           | Use a concentration of 1 - 2 µg/ml. Predicted molecular weight: 72 kDa. |
| ELISA    |           | Use at an assay dependent dilution.                                     |

## ターゲット情報

|       |  |
|-------|--|
| 機能    | Junctophilins contribute to the formation of junctional membrane complexes (JMCs) which link the plasma membrane with the endoplasmic or sarcoplasmic reticulum in excitable cells. Provides a structural foundation for functional cross-talk between the cell surface and intracellular calcium release channels. JPH1 contributes to the construction of the skeletal muscle triad by linking the t-tubule (transverse-tubule) and SR (sarcoplasmic reticulum) membranes. |
| 組織特異性 | Abundantly expressed in skeletal muscle. Very low levels in heart.   |
| 配列類似性 | Belongs to the junctophilin family.<br>Contains 7 MORN repeats.  |
| ドメイン  | The MORN (membrane occupation and recognition nexus) repeats contribute to the plasma membrane binding, possibly by interacting with phospholipids.  |
| 細胞内局在 | Cell membrane. Endoplasmic reticulum membrane. Sarcoplasmic reticulum membrane. Localized predominantly on the plasma membrane. The transmembrane domain is anchored in endoplasmic/sarcoplasmic reticulum membrane, while the N-terminal part associates with the plasma membrane. In skeletal muscle cells, it is predominantly localized at the junction of the A and I bands.  |

## 画像



**Lane 1** : Anti-JPH1 antibody (ab79062) at 1 µg/ml

**Lane 2** : Anti-JPH1 antibody (ab79062) at 2 µg/ml

**All lanes** : 293 cell lysate

Lysates/proteins at 15 µg per lane.

**Predicted band size:** 72 kDa

**Observed band size:** 72 kDa

**Please note:** All products are "FOR RESEARCH USE ONLY AND ARE NOT INTENDED FOR DIAGNOSTIC OR THERAPEUTIC USE"

## Our Promise to you: Quality guaranteed and expert technical support

- Replacement or refund for products not performing as stated on the datasheet
- Valid for 12 months from date of delivery
- Response to your inquiry within 24 hours
- We provide support in Chinese, English, French, German, Japanese and Spanish
- Extensive multi-media technical resources to help you
- We investigate all quality concerns to ensure our products perform to the highest standards

If the product does not perform as described on this datasheet, we will offer a refund or replacement. For full details of the Abpromise, please visit <http://www.abcam.co.jp/abpromise> or contact our technical team.

## Terms and conditions

---

- Guarantee only valid for products bought direct from Abcam or one of our authorized distributors