

Product datasheet

Anti-P70 S6 Kinase beta antibody ab76960

画像数 4

製品の概要

製品名	Anti-P70 S6 Kinase beta antibody
製品の詳細	Mouse monoclonal to P70 S6 Kinase beta
由来種	Mouse
アプリケーション	<b>適用あり:</b> WB, ICC/IF, ELISA
種交差性	<b>交差種:</b> Human
免疫原	Partial recombinant RPS6KB2 protein fragment with the sequence MAAVFDLDDLETEEGSEGEPELSPADACPLAELRAAGLEPVGHYEEVEL TETSVNVGPERIGPHSFELLRVLGKGGYGKVFQVRKVQGTNLGKIYAM KV and a proprietary tag.  <a href="#">Run BLAST with</a> <a href="#">Run BLAST with</a>
ポジティブ・コントロール	Transfected lysate (293T cells) and recombinant protein

製品の特性

製品の状態	Liquid
保存方法	Shipped at 4°C. Upon delivery aliquot. Store at -20°C or -80°C. Avoid freeze / thaw cycle.
バッファー	Preservative: None Constituents: 1X PBS, pH 7.2
精製度	Protein A purified
ポリ/モノ	モノクローナル
アイソタイプ	IgG2a
軽鎖の種類	kappa

アプリケーション

Our [Abpromise guarantee](#) covers the use of **ab76960** in the following tested applications.

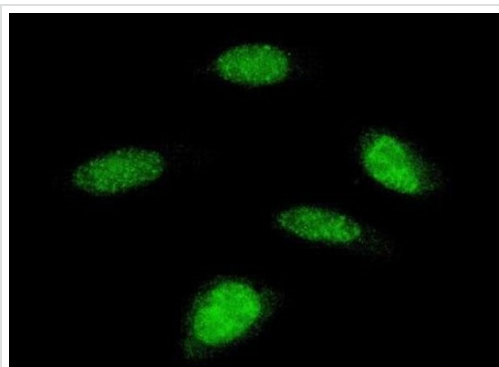
The application notes include recommended starting dilutions; optimal dilutions/concentrations should be determined by the end user.

アプリケーション	Abreviews	特記事項
WB		1/500 - 1/1000. Detects a band of approximately 53 kDa (predicted molecular weight: 53 kDa).
ICC/IF		Use a concentration of 10 µg/ml.
ELISA		Use at an assay dependent concentration.

## ターゲット情報

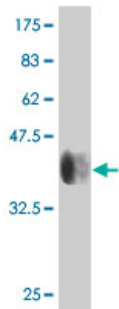
機能	Phosphorylates specifically ribosomal protein S6.
配列類似性	Belongs to the protein kinase superfamily. AGC Ser/Thr protein kinase family. S6 kinase subfamily. Contains 1 AGC-kinase C-terminal domain. Contains 1 protein kinase domain.
翻訳後修飾	Phosphorylated upon DNA damage, probably by ATM or ATR.

## 画像



Immunofluorescent analysis of HeLa cells with ab76960 at a concentration of 10 µg/mL.

Immunocytochemistry/ Immunofluorescence - Anti-P70 S6 Kinase beta antibody (ab76960)

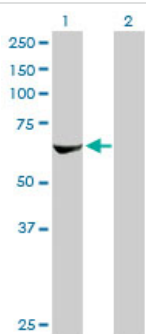


Western blot - P70 S6 Kinase beta antibody (ab76960)

Anti-P70 S6 Kinase beta antibody (ab76960) at 1/2500 dilution + Recombinant protein at 0.1 µg

**Predicted band size:** 53 kDa

This blot shows the antibody to be reactive against the recombinant protein used as the immunizing peptide (expected band size 37kDa).



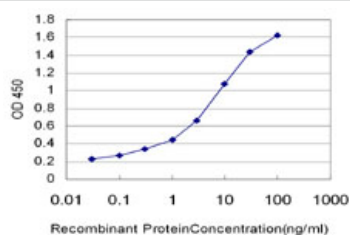
Western blot - P70 S6 Kinase beta antibody (ab76960)

**All lanes :** Anti-P70 S6 Kinase beta antibody (ab76960) at 1/1000 dilution

**Lane 1 :** RPS6KB2 transfected 293T lysate

**Lane 2 :** Non-transfected 293T lysate

**Predicted band size:** 53 kDa



ELISA - P70 S6 Kinase beta antibody (ab76960)

Detection limit for recombinant tagged RPS6KB2 (proprietary tag) is approximately 0.1ng/ml as a capture antibody.

**Please note:** All products are "FOR RESEARCH USE ONLY AND ARE NOT INTENDED FOR DIAGNOSTIC OR THERAPEUTIC USE"

### Our Abpromise to you: Quality guaranteed and expert technical support

- Replacement or refund for products not performing as stated on the datasheet
- Valid for 12 months from date of delivery
- Response to your inquiry within 24 hours
- We provide support in Chinese, English, French, German, Japanese and Spanish
- Extensive multi-media technical resources to help you

- We investigate all quality concerns to ensure our products perform to the highest standards

If the product does not perform as described on this datasheet, we will offer a refund or replacement. For full details of the Abpromise, please visit <http://www.abcam.co.jp/abpromise> or contact our technical team.

### **Terms and conditions**

---

- Guarantee only valid for products bought direct from Abcam or one of our authorized distributors