

Product datasheet

Anti-VRK1 antibody ab76864

画像数 3

製品の概要

| | |
|--------------|--|
| 製品名 | Anti-VRK1 antibody |
| 製品の詳細 | Mouse polyclonal to VRK1 |
| アプリケーション | 適用あり: WB, ICC/IF |
| 種交差性 | 交差種: Human |
| 免疫原 | Recombinant full length human VRK1 protein (NP_003375.1, 1 a.a. ~ 396 a.a) |
| ポジティブ・コントロール | Transfected 293T cell lysate, human pancreas tissue lysate and HeLa cells. |

製品の特性

| | |
|--------|---|
| 製品の状態 | Liquid |
| 保存方法 | Shipped at 4°C. Upon delivery aliquot and store at -20°C or -80°C. Avoid repeated freeze / thaw cycles. |
| バッファー | Preservative: None Constituents: 1X PBS, pH 7.2 |
| 精製度 | Protein A purified |
| ポリ/モノ | ポリクローナル |
| アイソタイプ | IgG |

アプリケーション

Our [Abpromise guarantee](#) covers the use of **ab76864** in the following tested applications.

The application notes include recommended starting dilutions; optimal dilutions/concentrations should be determined by the end user.

| アプリケーション | Abreviews | 特記事項 |
|----------|-----------|------|
| WB | | |
| ICC/IF | | |

追加情報

ICC/IF: Use at a concentration of 10 µg/ml of the purified antibody.
WB: 1/500 - 1/1000. Detects a band of approximately 50 kDa (predicted molecular weight: 45 kDa).

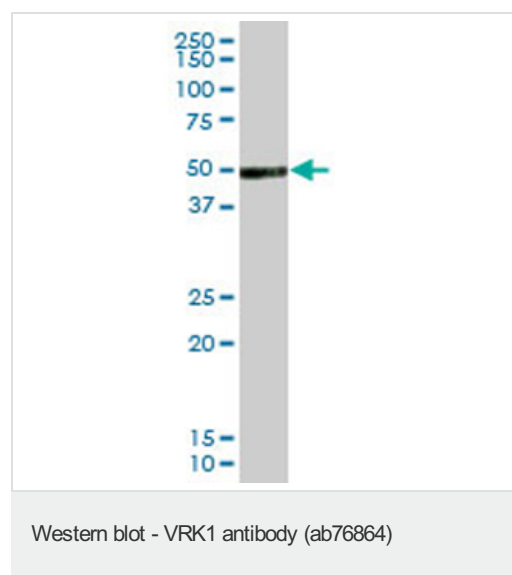
Not yet tested in other applications.

Optimal dilutions/concentrations should be determined by the end user.

ターゲット情報

| | |
|-------|--|
| 機能 | Serine/threonine kinase that phosphorylates 'Thr-18' of p53/TP53 and may thereby prevent the interaction between p53/TP53 and MDM2. |
| 組織特異性 | Widely expressed. Highly expressed in fetal liver, testis and thymus. |
| 関連疾患 | Defects in VRK1 are the cause of pontocerebellar hypoplasia type 1 (PCH1) [MIM:607596]; also called pontocerebellar hypoplasia with infantile spinal muscular atrophy or pontocerebellar hypoplasia with anterior horn cell disease. PCH1 is characterized by an abnormally small cerebellum and brainstem, central and peripheral motor dysfunction from birth, gliosis and anterior horn cell degeneration resembling infantile spinal muscular atrophy (SMA). |
| 配列類似性 | Belongs to the protein kinase superfamily. CK1 Ser/Thr protein kinase family. VRK subfamily. Contains 1 protein kinase domain. |
| 翻訳後修飾 | Autophosphorylated at various serine and threonine residues. Autophosphorylation does not impair its ability to phosphorylate p53/TP53. |
| 細胞内局在 | Nucleus. Dispersed throughout the cell but not located on mitotic spindle or chromatids during mitosis. |

画像



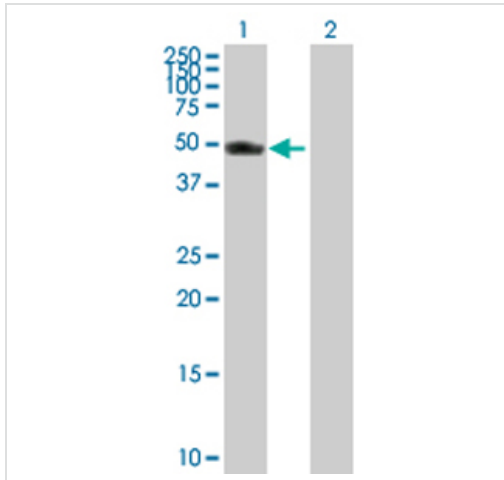
Anti-VRK1 antibody (ab76864) at 1/500 dilution + human pancreas tissue lysate at 25 μ g

Secondary

Goat anti-mouse IgG (H&L)-HRP conjugate at 1/2500 dilution

Predicted band size : 45 kDa

Observed band size : 50 kDa



Western blot - VRK1 antibody (ab76864)

All lanes : Anti-VRK1 antibody (ab76864) at 1/500 dilution

Lane 1 : VRK1 transfected 293T cell lysate

Lane 2 : Non-transfected 293T cell lysate

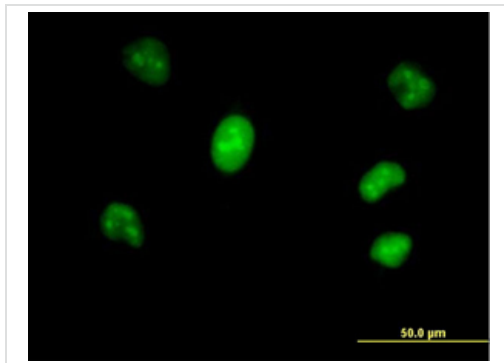
Lysates/proteins at 25 µg per lane.

Secondary

Goat anti-mouse IgG (H&L)-HRP conjugate at 1/2500 dilution

Predicted band size : 45 kDa

Observed band size : 50 kDa



Immunocytochemistry/ Immunofluorescence - VRK1 antibody (ab76864)

ab76864 at 10µg/ml staining VRK1 in HeLa cells.

Please note: All products are "FOR RESEARCH USE ONLY AND ARE NOT INTENDED FOR DIAGNOSTIC OR THERAPEUTIC USE"

Our Abpromise to you: Quality guaranteed and expert technical support

- Replacement or refund for products not performing as stated on the datasheet
- Valid for 12 months from date of delivery
- Response to your inquiry within 24 hours
- We provide support in Chinese, English, French, German, Japanese and Spanish
- Extensive multi-media technical resources to help you
- We investigate all quality concerns to ensure our products perform to the highest standards

If the product does not perform as described on this datasheet, we will offer a refund or replacement. For full details of the Abpromise, please visit <http://www.abcam.co.jp/abpromise> or contact our technical team.

Terms and conditions

- Guarantee only valid for products bought direct from Abcam or one of our authorized distributors