


Product datasheet

Anti-CHODL antibody ab76710

1 References [画像数 1](#)

製品の概要

製品名	Anti-CHODL antibody
製品の詳細	Mouse monoclonal to CHODL
アプリケーション	適用あり: WB, ELISA
種交差性	交差種: Recombinant fragment 交差が予測される動物種: Mouse, Cow, Human 
免疫原	Recombinant fragment: RVVSGQKVCF ADFKHPCYKM AYFHELSSRV SFQEARLACE SEGGVLLSLE NEAEQKLIES MLQNLTKPGT GI, corresponding to amino acids 23-95 of human CHODL (NP_079220) with a 26 kDa tag. Run BLAST with ExPASy Run BLAST with NCBI
ポジティブ・コントロール	CHODL partial recombinant protein (the immunogen).

製品の特性

製品の状態	Liquid
保存方法	Shipped at 4°C. Upon delivery aliquot and store at -20°C or -80°C. Avoid repeated freeze / thaw cycles.
バッファー	Preservative: None Constituents: 1x PBS, pH 7.2
精製度	Protein A purified
ポリ/モノ	モノクローナル
アイソタイプ	IgG2a
軽鎖の種類	kappa

アプリケーション

Our [Abpromise guarantee](#) covers the use of **ab76710** in the following tested applications.

The application notes include recommended starting dilutions; optimal dilutions/concentrations should be determined by the end user.

アプリケーション	Abreviews	特記事項
----------	-----------	------

WB

ELISA

追加情報

ELISA: Use at an assay dependent dilution.

WB: Use at a concentration of 1 - 5 µg/ml. Detects a band of approximately 34 kDa (predicted molecular weight: 30 kDa).

This antibody has only been tested in WB against the recombinant fragment used as immunogen. We have no data on the detection of endogenous protein.

Not yet tested in other applications.

Optimal dilutions/concentrations should be determined by the end user.

ターゲット情報

組織特異性

Found in spleen, testis, prostate and fetal liver. Expression limited to vascular muscle of testis, smooth muscle of prostate stroma, heart muscle, skeletal muscle, crypts of small intestine, and red pulp of spleen.

配列類似性

Contains 1 C-type lectin domain.

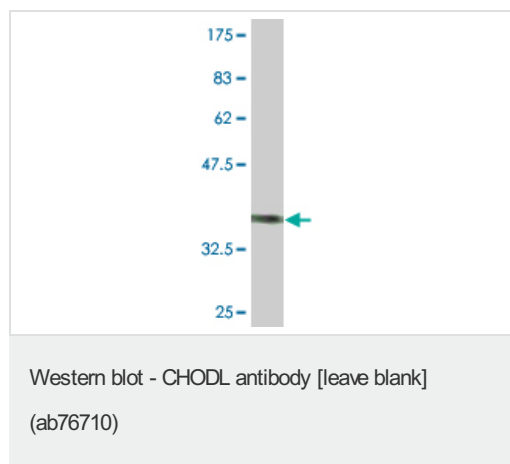
翻訳後修飾

N-glycosylated.

細胞内局在

Membrane.

画像

Anti-CHODL antibody (ab76710) at 5 µg +
immunogen at 0.2 µg**Secondary**Goat Anti-Mouse IgG (H&L)-HRP Conjugate at
1/5000 dilution**Predicted band size** : 30 kDa**Observed band size** : 34 kDa**Please note:** All products are "FOR RESEARCH USE ONLY AND ARE NOT INTENDED FOR DIAGNOSTIC OR THERAPEUTIC USE"**Our Abpromise to you: Quality guaranteed and expert technical support**

- Replacement or refund for products not performing as stated on the datasheet
- Valid for 12 months from date of delivery
- Response to your inquiry within 24 hours

- We provide support in Chinese, English, French, German, Japanese and Spanish
- Extensive multi-media technical resources to help you
- We investigate all quality concerns to ensure our products perform to the highest standards

If the product does not perform as described on this datasheet, we will offer a refund or replacement. For full details of the Abpromise, please visit <http://www.abcam.co.jp/abpromise> or contact our technical team.

Terms and conditions

- Guarantee only valid for products bought direct from Abcam or one of our authorized distributors