

Product datasheet

Anti-ACTH antibody [AH26] ab76554

画像数 1

製品の概要

製品名	Anti-ACTH antibody [AH26]
製品の詳細	Mouse monoclonal [AH26] to ACTH
由来種	Mouse
アプリケーション	<b>適用あり:</b> IHC-P
種交差性	<b>交差種:</b> Human
免疫原	Synthetic peptide, corresponding to amino acids 1-24 of Human ACTH.
ポジティブ・コントロール	Normal pituitary gland or pituitary adenoma.
特記事項	ab76554 is recommended for staining of routine formalin fixed, paraffin embedded tissues. It labels corticotrophs in the adenohypophysis and is useful in the classification of pituitary adenomas.

製品の特性

製品の状態	Liquid
保存方法	Shipped at 4°C. Upon delivery aliquot and store at -20°C. Avoid repeated freeze / thaw cycles.
バッファー	Preservative: None Constituents: 10mM PBS, pH 7.4
精製度	Protein G purified
特記事項 (精製)	Purified from ascites fluid by Protein G chromatography.
一次抗体 備考	ab76554 is recommended for staining of routine formalin fixed, paraffin embedded tissues. It labels corticotrophs in the adenohypophysis and is useful in the classification of pituitary adenomas.
ポリ/モノ	モノクローナル
クローン名	AH26
アイソタイプ	IgG1

アプリケーション

Our [Abpromise guarantee](#) covers the use of **ab76554** in the following tested applications.

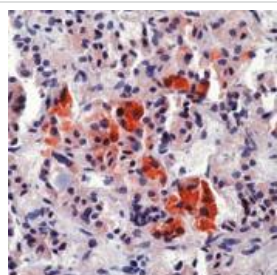
The application notes include recommended starting dilutions; optimal dilutions/concentrations should be determined by the end user.

アプリケーション	Abreviews	特記事項
IHC-P		Use a concentration of 0.2 - 0.4 µg/ml. No special pretreatment is required for staining of formalin fixed, paraffin embedded tissues.

## ターゲット情報

関連性	ACTH occurs in cells of the anterior pituitary and in neurons in brain. It regulates the corticosteroid production in the adrenal cortex. Beta endorphin and Met enkephalin are endogenous opiates. MSH (melanocyte stimulating hormone) increases the pigmentation of skin by increasing melanin production in melanocytes.
細胞内局在	Secreted

## 画像



Immunohistochemistry (Formalin/PFA-fixed paraffin-embedded sections) - ACTH antibody [AH26] - BSA and Azide free (ab76554)

Anti ACTH, at 0.4 µg/ml, staining ACTH in formalin fixed, paraffin embedded human pituitary gland by Immunohistochemistry. Peroxidase conjugating and AEC chromogen were used. Note cytoplasmic staining of anterior pituitary cells.

Note: Anti ACTH used to generate this image differed from ab76554 only due to the presence of BSA and azide.

**Please note:** All products are "FOR RESEARCH USE ONLY AND ARE NOT INTENDED FOR DIAGNOSTIC OR THERAPEUTIC USE"

## Our Abpromise to you: Quality guaranteed and expert technical support

- Replacement or refund for products not performing as stated on the datasheet
- Valid for 12 months from date of delivery
- Response to your inquiry within 24 hours
- We provide support in Chinese, English, French, German, Japanese and Spanish
- Extensive multi-media technical resources to help you
- We investigate all quality concerns to ensure our products perform to the highest standards

If the product does not perform as described on this datasheet, we will offer a refund or replacement. For full details of the Abpromise, please visit <http://www.abcam.co.jp/abpromise> or contact our technical team.

## Terms and conditions

---

- Guarantee only valid for products bought direct from Abcam or one of our authorized distributors