

Product datasheet

Anti-CYP4X1 antibody ab74810

画像数 2

製品の概要

| | |
|--------------|--|
| 製品名 | Anti-CYP4X1 antibody |
| 製品の詳細 | Rabbit polyclonal to CYP4X1 |
| 由来種 | Rabbit |
| 特異性 | ab74810 detects endogenous levels of total CYP4X1 protein. |
| アプリケーション | 適用あり: ELISA, WB, IHC-P |
| 種交差性 | 交差種: Human |
| 免疫原 | A synthetic peptide derived from an internal sequence of human CYP4X1. |
| ポジティブ・コントロール | IHC-P: human liver carcinoma tissue. WB: Extracts from COS7 cells. |

製品の特性

| | |
|-----------|---|
| 製品の状態 | Liquid |
| 保存方法 | Shipped at 4°C. Upon delivery aliquot and store at -20°C. Avoid freeze / thaw cycles. |
| バッファー | Preservative: 0.02% Sodium Azide Constituents: 50% Glycerol, PBS (without Mg ²⁺ and Ca ²⁺), 150mM Sodium chloride, pH 7.4 |
| 精製度 | Immunogen affinity purified |
| 特記事項 (精製) | The antibody was affinity purified from rabbit antiserum by affinity chromatography using epitope specific immunogen. |
| ポリモノ | ポリクローナル |
| アイソタイプ | IgG |

アプリケーション

Our [Abpromise guarantee](#) covers the use of **ab74810** in the following tested applications.

The application notes include recommended starting dilutions; optimal dilutions/concentrations should be determined by the end user.

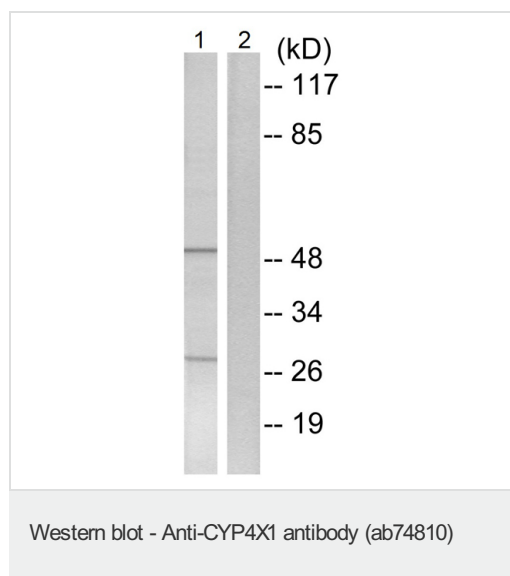
| アプリケーション | Abreviews | 特記事項 |
|----------|-----------|----------|
| ELISA | | 1/40000. |

| アプリケーション | Abreviews | 特記事項 |
|----------|-----------|---|
| WB | | 1/500 - 1/1000. Predicted molecular weight: 59 kDa. |
| IHC-P | | 1/50 - 1/100. |

ターゲット情報

| | |
|--------------|--|
| 関連性 | CYP4X1 is a member of the cytochrome P450 superfamily of enzymes. The cytochrome P450 proteins are monooxygenases which catalyze many reactions involved in drug metabolism and synthesis of cholesterol, steroids and other lipids. The expression pattern of a similar rat protein suggests that this protein may be involved in neurovascular function in the brain. Catalytic activity: $RH + \text{reduced flavoprotein} + O_2 = ROH + \text{oxidized flavoprotein} + H_2O$. |
| 細胞内局在 | Endoplasmic reticulum membrane; Peripheral membrane protein. Microsome membrane; Peripheral membrane protein. |

画像

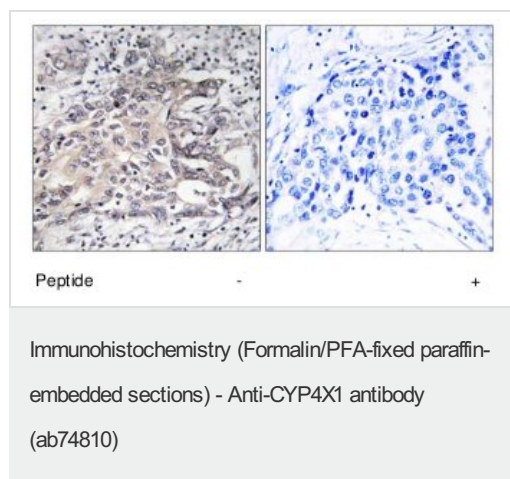


All lanes : Anti-CYP4X1 antibody (ab74810)

Lane 1 : COS7 cell lysate

Lane 2 : COS7 cell lysate with Synthesized peptide

Predicted band size: 59 kDa



ab74810, at 1/50 dilution, staining CYP4X1 in human liver carcinoma tissue sections by Immunohistochemistry in the absence (left image) and presence (right image) of the immunising peptide.

Please note: All products are "FOR RESEARCH USE ONLY AND ARE NOT INTENDED FOR DIAGNOSTIC OR THERAPEUTIC USE"

Our Abpromise to you: Quality guaranteed and expert technical support

- Replacement or refund for products not performing as stated on the datasheet
- Valid for 12 months from date of delivery
- Response to your inquiry within 24 hours

- We provide support in Chinese, English, French, German, Japanese and Spanish
- Extensive multi-media technical resources to help you
- We investigate all quality concerns to ensure our products perform to the highest standards

If the product does not perform as described on this datasheet, we will offer a refund or replacement. For full details of the Abpromise, please visit <http://www.abcam.co.jp/abpromise> or contact our technical team.

Terms and conditions

- Guarantee only valid for products bought direct from Abcam or one of our authorized distributors