

## Product datasheet

# Anti-CDC40 antibody ab74677

★★★★☆ 2 Abreviews [画像数 1](#)

### 製品の概要

製品名	Anti-CDC40 antibody
製品の詳細	Rabbit polyclonal to CDC40
由来種	Rabbit
アプリケーション	適用あり: WB, ELISA
種交差性	交差種: Human 交差が予測される動物種: Mouse, Rat
免疫原	Synthesized peptide derived from an internal region of human CDC40
ポジティブ・コントロール	Extracts from K562 cells, HUVEC cells or COLO cells

### 製品の特性

製品の状態	Liquid
保存方法	Shipped at 4°C. Upon delivery aliquot and store at -20°C. Avoid freeze / thaw cycles.
バッファー	Preservative: 0.02% Sodium Azide Constituents: 50% Glycerol, PBS, 150mM Sodium chloride, pH 7.4
精製度	Immunogen affinity purified
ポリ/モノ	ポリクローナル
アイソタイプ	IgG

### アプリケーション

Our [Abpromise guarantee](#) covers the use of **ab74677** in the following tested applications.

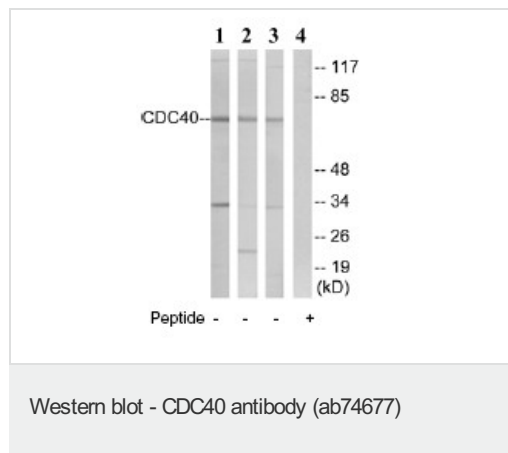
The application notes include recommended starting dilutions; optimal dilutions/concentrations should be determined by the end user.

アプリケーション	Abreviews	特記事項
WB		1/500 - 1/1000. Predicted molecular weight: 65 kDa.
ELISA		1/40000.

## ターゲット情報

機能	Associates with the spliceosome late in the splicing pathway and may function in the second step of pre-mRNA splicing.
配列類似性	Contains 7 WD repeats.
細胞内局在	Nucleus.

## 画像



**All lanes :** Anti-CDC40 antibody (ab74677)  
at 1/500 dilution

**Lane 1 :** extracts from K562 cells

**Lane 2 :** extracts from HUVEC  
cells

**Lane 3 :** extracts from COLO cells

**Lane 4 :** extracts from K562 cells with  
immunizing peptide at 10 µg

Lysates/proteins at 30 µg per lane.

**Predicted band size:** 65 kDa

**Observed band size:** 65 kDa

**Additional bands at:** 22 kDa, 34 kDa. We  
are unsure as to the identity of these extra  
bands.

**Please note:** All products are "FOR RESEARCH USE ONLY AND ARE NOT INTENDED FOR DIAGNOSTIC OR THERAPEUTIC USE"

## Our Abpromise to you: Quality guaranteed and expert technical support

- Replacement or refund for products not performing as stated on the datasheet
- Valid for 12 months from date of delivery
- Response to your inquiry within 24 hours
- We provide support in Chinese, English, French, German, Japanese and Spanish
- Extensive multi-media technical resources to help you
- We investigate all quality concerns to ensure our products perform to the highest standards

If the product does not perform as described on this datasheet, we will offer a refund or replacement. For full details of the Abpromise, please visit <http://www.abcam.co.jp/abpromise> or contact our technical team.

## Terms and conditions

- Guarantee only valid for products bought direct from Abcam or one of our authorized distributors