


Product datasheet

Anti-RAB6C antibody ab74453

画像数 1

製品の概要

製品名	Anti-RAB6C antibody
製品の詳細	Rabbit polyclonal to RAB6C
由来種	Rabbit
アプリケーション	適用あり: WB, ELISA
種交差性	交差種: Human 交差が予測される動物種: Mouse, Rat 
免疫原	Synthetic peptide derived from an internal region of human RAB6C.
ポジティブ・コントロール	Extracts from COLO cells

製品の特性

製品の状態	Liquid
保存方法	Shipped at 4°C. Store at -20°C. Stable for 12 months at -20°C.
バッファー	Preservative: 0.02% Sodium Azide Constituents: 50% Glycerol, PBS (without Mg <sup>2+</sup> and Ca <sup>2+</sup> ), 150mM Sodium chloride, pH 7.4
精製度	Immunogen affinity purified
ポリ/モノ	ポリクローナル
アイソタイプ	IgG

アプリケーション

Our [Abpromise guarantee](#) covers the use of **ab74453** in the following tested applications.

The application notes include recommended starting dilutions; optimal dilutions/concentrations should be determined by the end user.

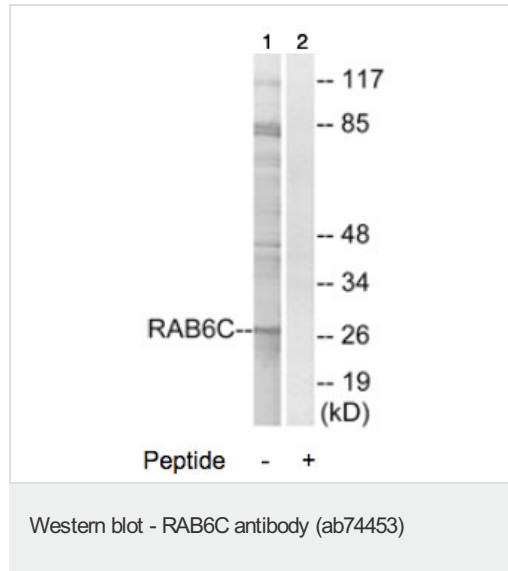
アプリケーション	Abreviews	特記事項
WB		1/500 - 1/1000. Predicted molecular weight: 28 kDa.
ELISA		1/40000.

## ターゲット情報

### 配列類似性

Belongs to the small GTPase superfamily, Rab family.

### 画像



**All lanes :** Anti-RAB6C antibody (ab74453)  
at 1/500 dilution

**Lane 1 :** Extracts from COLO cells

**Lane 2 :** Extracts from COLO cells with  
immunising peptide at 10 µg

Lysates/proteins at 30 µg per lane.

**Predicted band size:** 28 kDa

**Observed band size:** 28 kDa

**Additional bands at:** 115 kDa, 45 kDa, 85  
kDa. We are unsure as to the identity of these  
extra bands.

**Please note:** All products are "FOR RESEARCH USE ONLY AND ARE NOT INTENDED FOR DIAGNOSTIC OR THERAPEUTIC USE"

## Our Abpromise to you: Quality guaranteed and expert technical support

- Replacement or refund for products not performing as stated on the datasheet
- Valid for 12 months from date of delivery
- Response to your inquiry within 24 hours
- We provide support in Chinese, English, French, German, Japanese and Spanish
- Extensive multi-media technical resources to help you
- We investigate all quality concerns to ensure our products perform to the highest standards

If the product does not perform as described on this datasheet, we will offer a refund or replacement. For full details of the Abpromise, please visit <http://www.abcam.co.jp/abpromise> or contact our technical team.

## Terms and conditions

- Guarantee only valid for products bought direct from Abcam or one of our authorized distributors