


Product datasheet

Anti-GRF2 (phospho Y504) antibody ab74068

画像数 1

製品の概要

製品名	Anti-GRF2 (phospho Y504) antibody
製品の詳細	Rabbit polyclonal to GRF2 (phospho Y504)
由来種	Rabbit
特異性	ab74068 detects endogenous levels of GRF2 only when phosphorylated at tyrosine 504 (Human: Tyr504; Mouse: Tyr514).
アプリケーション	適用あり: WB, ELISA
種交差性	交差種: Human 交差が予測される動物種: Mouse 
免疫原	Synthetic phosphopeptide derived from human GRF2 around the phosphorylation site of tyrosine 504 (V-P-Y <sup>P</sup> -A-P)
ポジティブ・コントロール	Extracts from HepG2 cells treated with Na <sub>3</sub> VO <sub>4</sub> (0.3nM, 40mins).

製品の特性

製品の状態	Liquid
保存方法	Shipped at 4°C. Store at -20°C. Stable for 12 months at -20°C.
バッファー	Preservative: 0.02% Sodium Azide Constituents: 50% Glycerol, PBS (without Mg <sup>2+</sup> and Ca <sup>2+</sup> ), 150mM Sodium chloride, pH 7.4
精製度	Immunogen affinity purified
特記事項 (精製)	ab74068 was affinity-purified from rabbit antiserum by affinity-chromatography using epitope-specific phosphopeptide. The antibody against non-phosphopeptide was removed by chromatography using non-phosphopeptide corresponding to the phosphorylation site.
ポリ/モノ	ポリクローナル
アイソタイプ	IgG

アプリケーション

Our [Abpromise guarantee](#) covers the use of **ab74068** in the following tested applications.

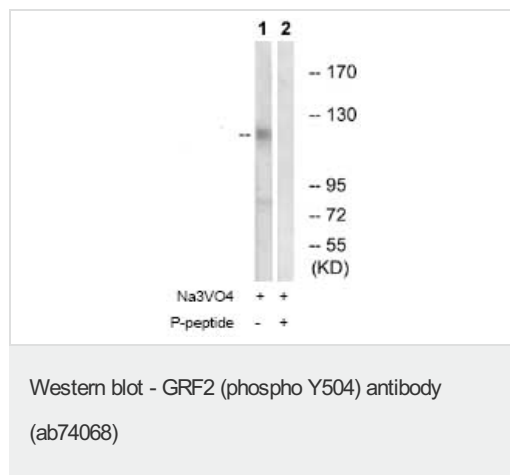
The application notes include recommended starting dilutions; optimal dilutions/concentrations should be determined by the end user.

アプリケーション	Abreviews	特記事項
WB		1/500 - 1/1000. Detects a band of approximately 121 kDa (predicted molecular weight: 121 kDa).
ELISA		1/10000.

## ターゲット情報

機能	Guanine nucleotide-releasing protein that binds to SH3 domain of CRK and GRB2/ASH. Transduces signals from CRK to activate RAS.
組織特異性	Ubiquitously expressed in adult and fetus. Expression is high in adult skeletal muscle and placenta and in fetal brain and heart. Low levels of expression in adult and fetal liver.
配列類似性	Contains 1 N-terminal Ras-GEF domain. Contains 1 Ras-GEF domain.
製品の状態	It localizes to cytoplasm and endosomes.

## 画像



**All lanes :** Anti-GRF2 (phospho Y504) antibody (ab74068) at 1/500 dilution

**Lane 1 :** Extracts from HepG2 cells treated with Na<sub>3</sub>VO<sub>4</sub> (0.3nM, 40mins),

**Lane 2 :** Extracts from HepG2 cells treated with Na<sub>3</sub>VO<sub>4</sub> (0.3nM, 40mins) with immunising phosphopeptide at 10 µg

Lysates/proteins at 30 µg per lane.

**Predicted band size:** 121 kDa

**Observed band size:** 121 kDa

**Please note:** All products are "FOR RESEARCH USE ONLY AND ARE NOT INTENDED FOR DIAGNOSTIC OR THERAPEUTIC USE"

## Our Abpromise to you: Quality guaranteed and expert technical support

- Replacement or refund for products not performing as stated on the datasheet
- Valid for 12 months from date of delivery
- Response to your inquiry within 24 hours
- We provide support in Chinese, English, French, German, Japanese and Spanish
- Extensive multi-media technical resources to help you

- We investigate all quality concerns to ensure our products perform to the highest standards

If the product does not perform as described on this datasheet, we will offer a refund or replacement. For full details of the Abpromise, please visit <http://www.abcam.co.jp/abpromise> or contact our technical team.

### **Terms and conditions**

---

- Guarantee only valid for products bought direct from Abcam or one of our authorized distributors