


Product datasheet

Anti-Granzyme B antibody ab73415

画像数 1

製品の概要

製品名	Anti-Granzyme B antibody
製品の詳細	Rabbit polyclonal to Granzyme B
由来種	Rabbit
アプリケーション	適用あり: WB
種交差性	交差種: Mouse, Rat 交差が予測される動物種: Human 
免疫原	Synthetic peptide conjugated to KLH derived from within residues 200 to the C-terminus of Human Granzyme B.Immunogen の所有権に関して(Peptide available as <a href="#">ab73723</a> .)
ポジティブ・コントロール	This antibody gave a positive signal in the following tissue lysates: Pancreas (Mouse); Pancreas (Rat)

製品の特性

製品の状態	Liquid
保存方法	Shipped at 4°C. Store at +4°C short term (1-2 weeks). Upon delivery aliquot. Store at -20°C or -80°C. Avoid freeze / thaw cycle.
バッファー	Preservative: 0.02% Sodium Azide Constituents: 1% BSA, PBS, pH 7.4
精製度	Immunogen affinity purified
ポリ/モノ	ポリクローナル
アイソタイプ	IgG

アプリケーション

Our [Abpromise guarantee](#) covers the use of **ab73415** in the following tested applications.

The application notes include recommended starting dilutions; optimal dilutions/concentrations should be determined by the end user.

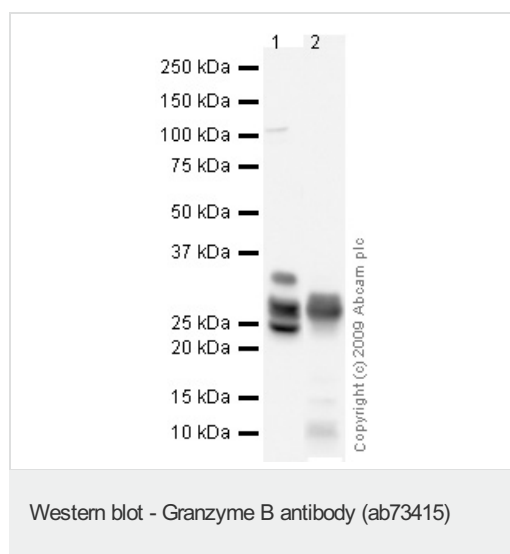
アプリケーション	Abreviews	特記事項
----------	-----------	------

アプリケーション	Abreviews	特記事項
WB		Use a concentration of 1 µg/ml. Detects a band of approximately 28 kDa (predicted molecular weight: 28 kDa).

## ターゲット情報

<b>機能</b>	This enzyme is necessary for target cell lysis in cell-mediated immune responses. It cleaves after Asp. Seems to be linked to an activation cascade of caspases (aspartate-specific cysteine proteases) responsible for apoptosis execution. Cleaves caspase-3, -7, -9 and 10 to give rise to active enzymes mediating apoptosis.
<b>配列類似性</b>	Belongs to the peptidase S1 family. Granzyme subfamily. Contains 1 peptidase S1 domain.
<b>細胞内局在</b>	Cytoplasmic granule. Cytoplasmic granules of cytolytic T-lymphocytes and natural killer cells.

## 画像



**All lanes :** Anti-Granzyme B antibody (ab73415) at 1 µg/ml

**Lane 1 :** Pancreas (Mouse) Tissue Lysate

**Lane 2 :** Pancreas (Rat) Tissue Lysate

Lysates/proteins at 10 µg per lane.

### Secondary

**All lanes :** Goat polyclonal to Rabbit IgG - H&L - Pre-Adsorbed (HRP) at 1/3000 dilution

Performed under reducing conditions.

**Predicted band size:** 28 kDa

**Observed band size:** 28 kDa

**Additional bands at:** 24 kDa, 32 kDa. We are unsure as to the identity of these extra bands.

**Exposure time:** 1 minute

**Please note:** All products are "FOR RESEARCH USE ONLY AND ARE NOT INTENDED FOR DIAGNOSTIC OR THERAPEUTIC USE"

## **Our Abpromise to you: Quality guaranteed and expert technical support**

---

- Replacement or refund for products not performing as stated on the datasheet
- Valid for 12 months from date of delivery
- Response to your inquiry within 24 hours
  
- We provide support in Chinese, English, French, German, Japanese and Spanish
- Extensive multi-media technical resources to help you
- We investigate all quality concerns to ensure our products perform to the highest standards

If the product does not perform as described on this datasheet, we will offer a refund or replacement. For full details of the Abpromise, please visit <http://www.abcam.co.jp/abpromise> or contact our technical team.

## **Terms and conditions**

---

- Guarantee only valid for products bought direct from Abcam or one of our authorized distributors