

## Product datasheet

# Anti-SPESP1 antibody ab72672

### 画像数 1

#### 製品の概要

製品名	Anti-SPESP1 antibody
製品の詳細	Mouse polyclonal to SPESP1
由来種	Mouse
アプリケーション	適用あり: WB
種交差性	交差種: Human
免疫原	Full length human SPESP1 protein (NP_663633)
ポジティブ・コントロール	SPESP1 transfected 293T cell lysate

#### 製品の特性

製品の状態	Liquid
保存方法	Shipped at 4°C. Upon delivery aliquot and store at -20°C or -80°C. Avoid repeated freeze / thaw cycles.
バッファー	Preservative: None Constituents: PBS, pH 7.2
精製度	Protein A purified
ポリ/モノ	ポリクローナル
アイソタイプ	IgG

#### アプリケーション

Our [Abpromise guarantee](#) covers the use of **ab72672** in the following tested applications.

The application notes include recommended starting dilutions; optimal dilutions/concentrations should be determined by the end user.

アプリケーション	Abreviews	特記事項
WB		1/500 - 1/1000. Predicted molecular weight: 39 kDa.

#### ターゲット情報

## 組織特異性

Highly expressed in testis, where it is localized in the acrosome of postmeiotic stages of spermiogenesis (round and elongating spermatids and in ejaculated spermatozoa) (at protein level). Poorly expressed in placenta and fetal lung.

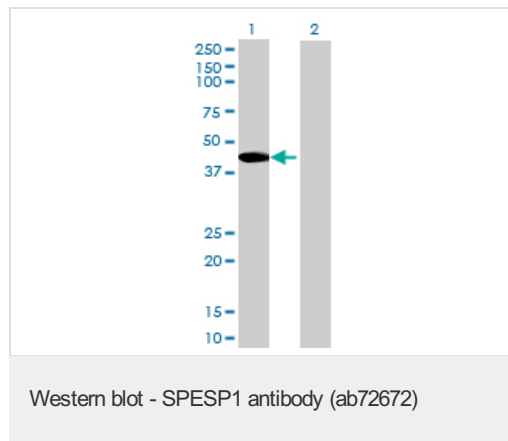
## 配列類似性

Belongs to the SPESP1 family.

## 細胞内局在

Cytoplasmic vesicle > secretory vesicle > acrosome. Small proacrosomal granules (during the Golgi phase), enlarged acrosomal vesicles (during the cap phase), acrosome (during the elongating phase), equatorial segment of the acrosome.

## 画像



**All lanes :** Anti-SPESP1 antibody (ab72672)  
at 1/500 dilution

**Lane 1 :** SPESP1 transfected 293T cell  
lysate

**Lane 2 :** Non transfected 293T cell lysate

Lysates/proteins at 25 µg per lane.

### Secondary

**All lanes :** Goat Anti-Mouse IgG (H&L)-HRP  
Conjugate at 1/2500 dilution

**Predicted band size:** 39 kDa

**Observed band size:** 39 kDa

**Please note:** All products are "FOR RESEARCH USE ONLY AND ARE NOT INTENDED FOR DIAGNOSTIC OR THERAPEUTIC USE"

## Our Abpromise to you: Quality guaranteed and expert technical support

- Replacement or refund for products not performing as stated on the datasheet
- Valid for 12 months from date of delivery
- Response to your inquiry within 24 hours
- We provide support in Chinese, English, French, German, Japanese and Spanish
- Extensive multi-media technical resources to help you
- We investigate all quality concerns to ensure our products perform to the highest standards

If the product does not perform as described on this datasheet, we will offer a refund or replacement. For full details of the Abpromise, please visit <http://www.abcam.co.jp/abpromise> or contact our technical team.

## Terms and conditions

- Guarantee only valid for products bought direct from Abcam or one of our authorized distributors