

Product datasheet

Anti-Cdk4 antibody - C-terminal ab72090

画像数 3

製品の概要

製品名	Anti-Cdk4 antibody - C-terminal
製品の詳細	Rabbit polyclonal to Cdk4 - C-terminal
由来種	Rabbit
アプリケーション	適用あり: ELISA, IHC-P, WB, ICC/IF, Flow Cyt
種交差性	交差種: Human
免疫原	Synthetic peptide corresponding to Human Cdk4 (C terminal) conjugated to Keyhole Limpet Haemocyanin (KLH). synthetic peptide between aa 273-303 Database link: P11802
ポジティブ・コントロール	HL60 cell lysate and human hepatocarcinoma tissue.

製品の特性

製品の状態	Liquid
保存方法	Shipped at 4°C. Upon delivery aliquot and store at -20°C or -80°C. Avoid repeated freeze / thaw cycles.
バッファー	Preservative: 0.09% Sodium Azide Constituents: PBS
精製度	Protein G purified
特記事項 (精製)	ab72090 is purified through a protein G column, eluted with high and low pH buffers and neutralized immediately, followed by dialysis against PBS.
ポリ/モノ	ポリクローナル
アイソタイプ	IgG

アプリケーション

Our [Abpromise guarantee](#) covers the use of **ab72090** in the following tested applications.

The application notes include recommended starting dilutions; optimal dilutions/concentrations should be determined by the end user.

アプリケーション	Abreviews	特記事項
ELISA		1/1000.

アプリケーション	Abreviews	特記事項
IHC-P		1/50 - 1/100.
WB		1/100 - 1/500. Detects a band of approximately 37 kDa (predicted molecular weight: 34 kDa).
ICC/IF		1/10 - 1/50.
Flow Cyt		1/10 - 1/50. ab171870 - Rabbit polyclonal IgG, is suitable for use as an isotype control with this antibody.

ターゲット情報

機能	Ser/Thr-kinase component of cyclin D-CDK4 (DC) complexes that phosphorylate and inhibit members of the retinoblastoma (RB) protein family including RB1 and regulate the cell-cycle during G(1)/S transition. Phosphorylation of RB1 allows dissociation of the transcription factor E2F from the RB/E2F complexes and the subsequent transcription of E2F target genes which are responsible for the progression through the G(1) phase. Hypophosphorylates RB1 in early G(1) phase. Cyclin D-CDK4 complexes are major integrators of various mitogenic and antimitogenic signals. Also phosphorylates SMAD3 in a cell-cycle-dependent manner and represses its transcriptional activity. Component of the ternary complex, cyclin D/CDK4/CDKN1B, required for nuclear translocation and activity of the cyclin D-CDK4 complex.
関連疾患	Defects in CDK4 are a cause of susceptibility to cutaneous malignant melanoma type 3 (CMM3) [MIM:609048]. Malignant melanoma is a malignant neoplasm of melanocytes, arising de novo or from a pre-existing benign nevus, which occurs most often in the skin but also may involve other sites.
配列類似性	Belongs to the protein kinase superfamily. CMGC Ser/Thr protein kinase family. CDC2/CDKX subfamily. Contains 1 protein kinase domain.
翻訳後修飾	Phosphorylation at Thr-172 is required for enzymatic activity. Phosphorylated, in vitro, at this site by CCNH-CDK7, but, in vivo, appears to be phosphorylated by a proline-directed kinase. In the cyclin D-CDK4-CDKN1B complex, this phosphorylation and consequent CDK4 enzyme activity, is dependent on the tyrosine phosphorylation state of CDKN1B. Thus, in proliferating cells, CDK4 within the complex is phosphorylated on Thr-172 in the T-loop. In resting cells, phosphorylation on Thr-172 is prevented by the non-tyrosine-phosphorylated form of CDKN1B.
細胞内局在	Cytoplasm. Nucleus. Membrane. Cytoplasmic when non-complexed. Forms a cyclin D-CDK4 complex in the cytoplasm as cells progress through G(1) phase. The complex accumulates on the nuclear membrane and enters the nucleus on transition from G(1) to S phase. Also present in nucleoli and heterochromatin lumps. Colocalizes with RB1 after release into the nucleus.

画像

250
150
100
75
50
37
25
15
10

Western blot - Cdk4 antibody - C-terminal (ab72090)

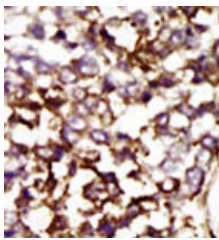
Anti-Cdk4 antibody - C-terminal (ab72090) at
1/100 dilution + HL60 cell lysate at 12.5 µg

Secondary

HRP-anti-rabbit

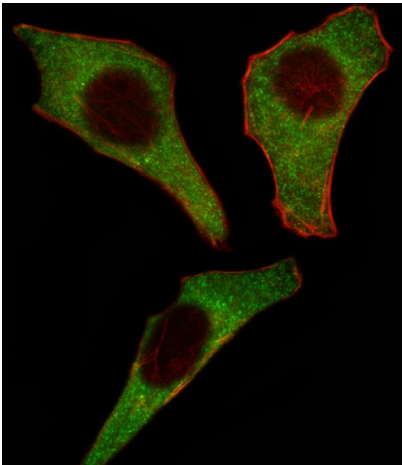
Predicted band size: 34 kDa

Observed band size: 37 kDa



Immunohistochemistry (Formalin/PFA-fixed paraffin-
embedded sections) - Cdk4 antibody - C-terminal
(ab72090)

ab72090 at 1/50 dilution, staining Cdk4 in
human hepatocarcinoma by
Immunohistochemistry, Formalin-fixed,
Paraffin-embedded tissue, followed by
peroxidase-conjugated secondary antibody
and AEC staining.



Immunocytochemistry/ Immunofluorescence - Anti-
Cdk4 antibody - C-terminal (ab72090)

Fluorescent image of HeLa cell stained
with ab72090. HeLa cells were fixed with 4%
PFA (20 min), permeabilized with Triton X-
100 (0.1%, 10 min), then incubated with
ab72090 antibody at 1/25 for 1 h at 37°C. For
secondary antibody, Alexa Fluor®488
conjugated donkey anti-rabbit antibody
(green) was used 1/400 dilution for 50 min at
37°C. Cytoplasmic actin was counterstained with
Alexa Fluor®555 (red) conjugated Phalloidin
(7units/ml, 1 h at 37°C). Cdk4 immunoreactivity
is localized to Cytoplasm significantly.

Please note: All products are "FOR RESEARCH USE ONLY AND ARE NOT INTENDED FOR DIAGNOSTIC OR THERAPEUTIC USE"

Our Abpromise to you: Quality guaranteed and expert technical support

- Replacement or refund for products not performing as stated on the datasheet
- Valid for 12 months from date of delivery
- Response to your inquiry within 24 hours

- We provide support in Chinese, English, French, German, Japanese and Spanish
- Extensive multi-media technical resources to help you
- We investigate all quality concerns to ensure our products perform to the highest standards

If the product does not perform as described on this datasheet, we will offer a refund or replacement. For full details of the Abpromise, please visit <http://www.abcam.co.jp/abpromise> or contact our technical team.

Terms and conditions

- Guarantee only valid for products bought direct from Abcam or one of our authorized distributors